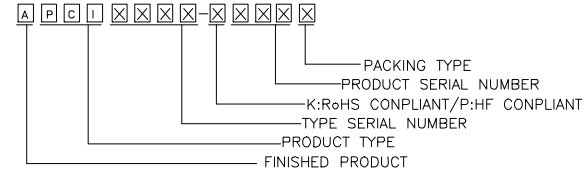
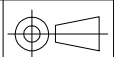


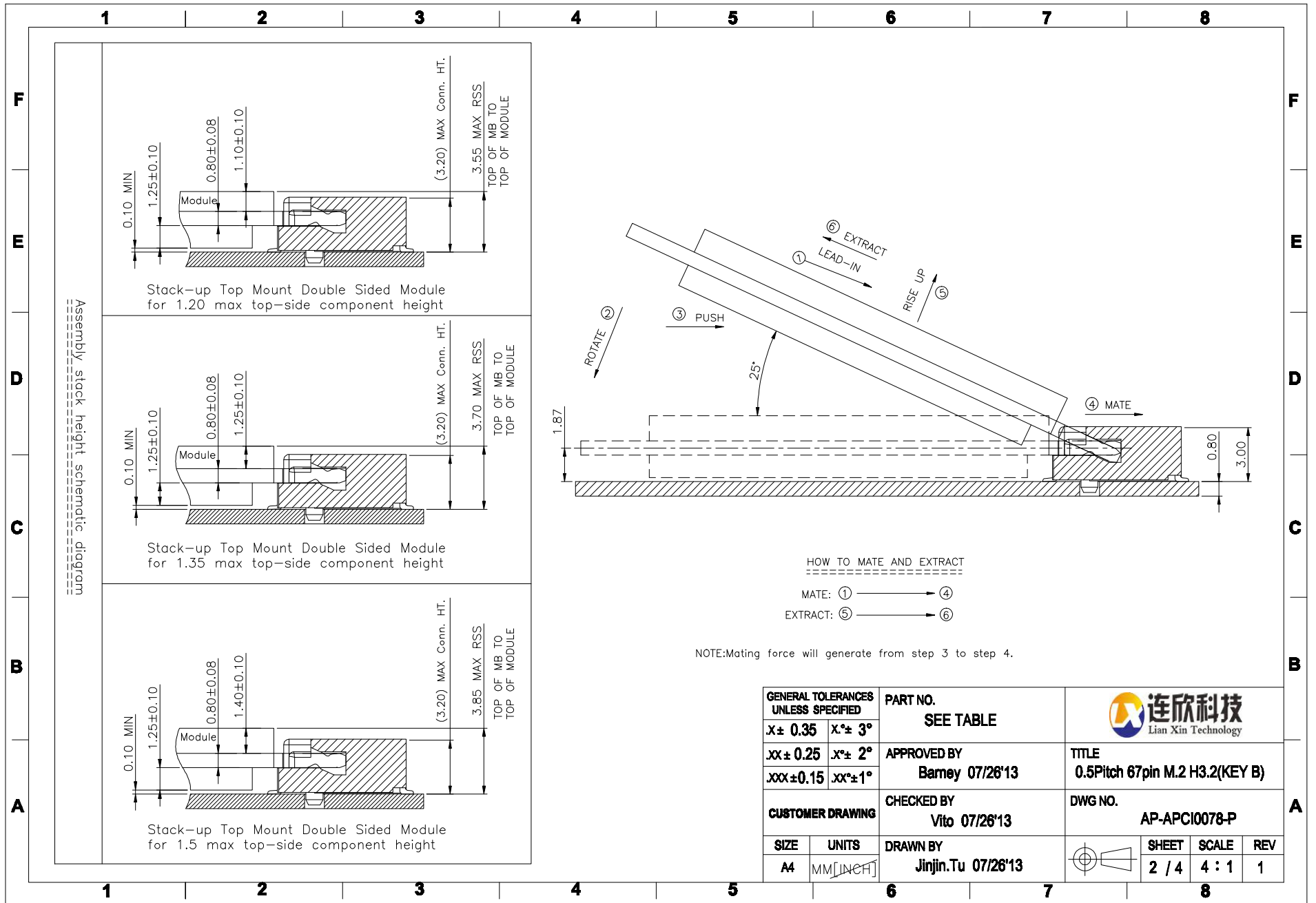
| REV. | ECR/N NO./DESCRIPTION | DATE     | DRAWN     | CHECKED | APPROVE |
|------|-----------------------|----------|-----------|---------|---------|
| 1    | SN14040               | 05/06'14 | Jinjin.Tu | Vito    | Barney  |


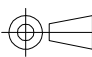
- NOTES:
- MATERIAL SPECIFICATION:
    - 1-1. HOUSING: LCP+40%GF, UL94V-0, COLOR: BLACK.
    - 1-2. CONTACT: COPPER ALLOY.
    - 1-3. SMT TAB: S50C.
  - PLATING SPECIFICATION:
    - 2-1. CONTACT:
      - 50u" MIN. NICKEL UNDER PLATING OVER ALL.
      - G/F PLATING ON SOLDER AREA.
      - GOLD PLATING ON CONTACT AREA: SEE TABLE
    - 2-2. SMT TAB:
      - 50u" MIN. NICKEL UNDER PLATING OVER ALL.
      - 80u" MIN. MATTE TIN PLATING ON SOLDER AREA.
  - HF COMPLIANT, ROHS COMPLIANT.
  - DATE CODE: XXXXXX
    - DAY
    - WEEK
    - YEAR
  - MECHANICAL PERFORMANCE:
    - 5-1. DURABILITY: SEE TABLE
  - ELECTRICAL PERFORMANCE:
    - 6-1. CURRENT: 0.5A PER PIN.
    - 6-2. LLCR: INITIAL 55mΩ MAX. ; FINAL ΔLLCR=20mΩ MAX..
  - IR REFLOW:
    - THE TEMPERATURE SHALL BE 260±5°C MAINTAINING 10±1 SECONDS.
  - PRODUCT NUMBER NOTE

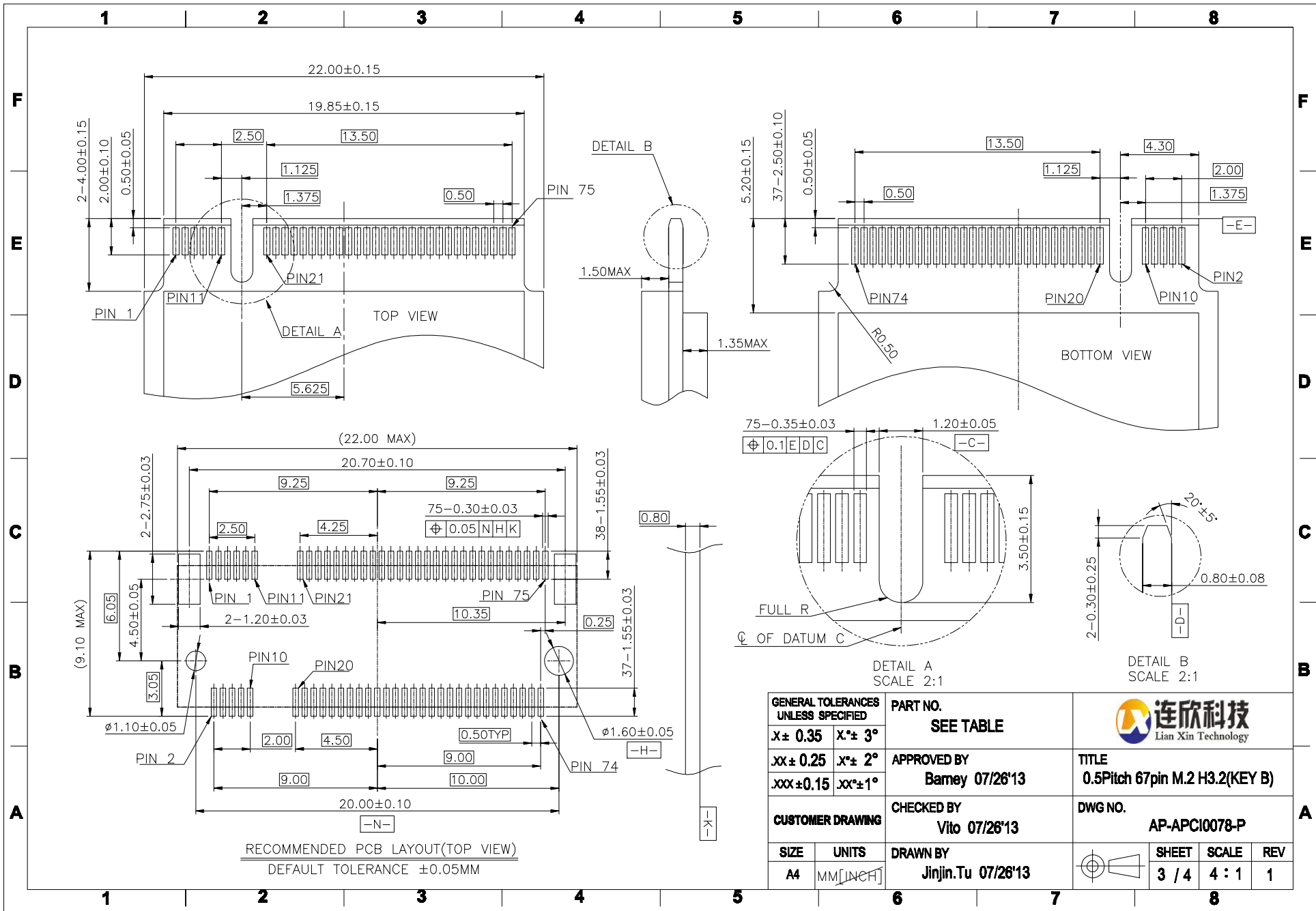


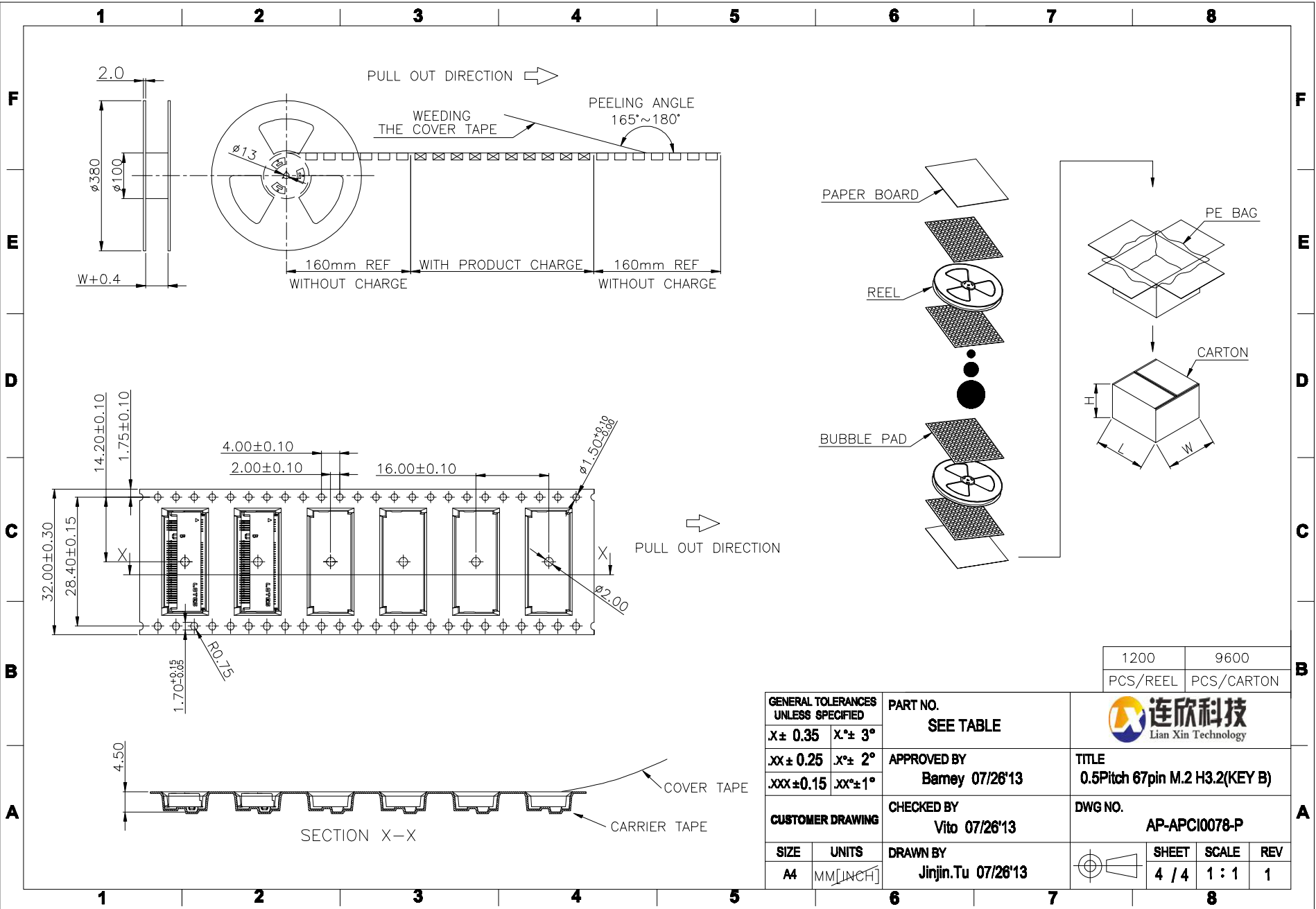
| PART NO.       | CONTACT PLATING | DURABILITY |
|----------------|-----------------|------------|
| APCI0078-P001A | 30u" MIN. GOLD  | 60 CYCLES. |
| APCI0078-P002A | 1~3u" MIN. GOLD | 25 CYCLES. |
| APCI0078-P003A | 10u" MIN. GOLD  | 25 CYCLES. |

| GENERAL TOLERANCES UNLESS SPECIFIED |           | PART NO.                       | <br>Lian Xin Technology  |       |       |     |       |       |   |
|-------------------------------------|-----------|--------------------------------|---|-------|-------|-----|-------|-------|---|
| X ± 0.35                            | X° ± 3°   | SEE TABLE                      |   |       |       |     |       |       |   |
| .XX ± 0.25                          | .X° ± 2°  | APPROVED BY<br>Barney 07/26'13 | TITLE<br>0.5Pitch 67pin M.2 H3.2(KEY B)   |       |       |     |       |       |   |
| .XXX ± 0.15                         | .XX° ± 1° | CHECKED BY<br>Vito 07/26'13    | DWG NO.<br>AP-APCI0078-P  |       |       |     |       |       |   |
| CUSTOMER DRAWING                    |           | DRAWN BY<br>Jinjin.Tu 07/26'13 |  <table border="1"> <thead> <tr> <th>SHEET</th> <th>SCALE</th> <th>REV</th> </tr> </thead> <tbody> <tr> <td>1 / 4</td> <td>4 : 1</td> <td>1</td> </tr> </tbody> </table> | SHEET | SCALE | REV | 1 / 4 | 4 : 1 | 1 |
| SHEET                               | SCALE     | REV                            |   |       |       |     |       |       |   |
| 1 / 4                               | 4 : 1     | 1                              |   |       |       |     |       |       |   |



|                                     |                         |                    |  |       |
|-------------------------------------|-------------------------|--------------------|--|-------|
| GENERAL TOLERANCES UNLESS SPECIFIED |                         | PART NO.           | <br>Lian Xin Technology |       |
| $X \pm 0.35$                        | $X^\circ \pm 3^\circ$   | SEE TABLE          |  |       |
| $.XX \pm 0.25$                      | $X^\circ \pm 2^\circ$   | APPROVED BY        | TITLE  |       |
| $.XXX \pm 0.15$                     | $.XX^\circ \pm 1^\circ$ | Barney 07/26'13    |  |       |
| CUSTOMER DRAWING                    |                         | CHECKED BY         | DWG NO.  |       |
|                                     |                         | Vito 07/26'13      |  |       |
| SIZE                                | UNITS                   | DRAWN BY           | <br>SHEET SCALE REV     |       |
| A4                                  | MM [INCH]               | Jinjin.Tu 07/26'13 |  |       |
|                                     |                         |                    |  | 2 / 4 |
|                                     |                         |                    |  | 4 : 1 |
|                                     |                         |                    |  | 1     |




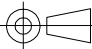


F  
E  
D  
C  
B  
A

F  
E  
D  
C  
B  
A

1 2 3 4 5 6 7 8

1 2 3 4 5 6 7 8

|                                     |           |                                |   |       |       |     |
|-------------------------------------|-----------|--------------------------------|---|-------|-------|-----|
| GENERAL TOLERANCES UNLESS SPECIFIED |           | PART NO.<br>SEE TABLE          | <br><b>连欣科技</b><br>Lian Xin Technology |       |       |     |
| X ± 0.35                            | X° ± 3°   |                                |   |       |       |     |
| .XX ± 0.25                          | X° ± 2°   | APPROVED BY<br>Barney 07/26'13 | TITLE<br>0.5Pitch 67pin M.2 H3.2(KEY B)   |       |       |     |
| .XXX ± 0.15                         | .XX° ± 1° | CHECKED BY<br>Vito 07/26'13    | DWG NO.<br>AP-APCI0078-P  |       |       |     |
| CUSTOMER DRAWING                    |           | DRAWN BY<br>Jinjin.Tu 07/26'13 |                                        | SHEET | SCALE | REV |
| SIZE                                | UNITS     |                                |   | 4 / 4 | 1 : 1 | 1   |