

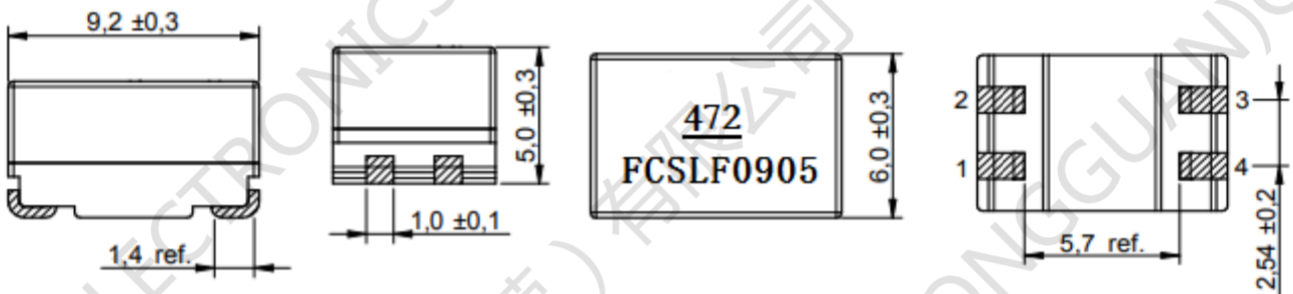
## SMD Common Mode Line Filter

### FC-SLF0905 –Series

- Small size
- High Impedance up to 1500  $\Omega$
- Frequency Range: 1MHz, 0.1 Vrms
- Low Primary DCR version
- Ambient temperature  $-40^{\circ}\text{C}$  to  $+85^{\circ}\text{C}$
- Storage temperature Component:  $-40^{\circ}\text{C}$  to  $+125^{\circ}\text{C}$



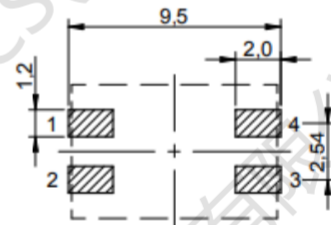
### 1. Dimensions:mm



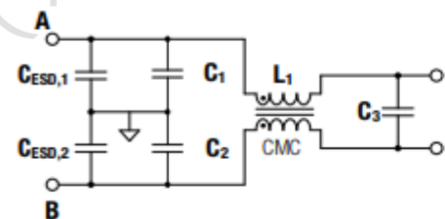
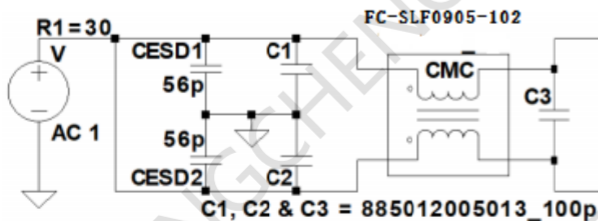
### 2.Schematic:



### 3.LAYOUT RECOMMENDATION:(mm)



### 4.Application Fig:



**FC-SLF0905 -Series SMD Common Mode Line Filter**

**5. ELECTRIC CHARACTERICS**

Part Number	Test condition	DC Resistance N1,N2( $\Omega$ )	Inductance ( $\mu$ H)	Nominal voltage Vdc(V)	Rated Current (A)	Freq Range (MHZ)
FC-SLF0905-100YL	0.1V,1kHz	0.08 max	10 $\pm$ 30%	50	1.6	20~300
FC-SLF0905-250YL	0.1V,1kHz	0.16 max	25 $\pm$ 30%	50	1.0	20~150
FC-SLF0905-400YL	0.1V,1kHz	0.25 max	40 $\pm$ 30%	50	0.9	20~100
FC-SLF0905-510YL	0.1V,1kHz	0.32 max	51 $\pm$ 30%	50	0.8	20~100
FC-SLF0905-251YL	5mV,100KHz	0.13 max	250 $\pm$ 50%	50	1.2	3~20
FC-SLF0905-471YL	5mV,100KHz	0.14 max	470 $\pm$ 50%	50	1.1	2~20
FC-SLF0905-501YL	5mV,100KHz	0.15 max	500 $\pm$ 50%	50	1.0	1~20
FC-SLF0905-102YL	5mV,100KHz	0.31 max	1000 $\pm$ 50%	50	0.8	1~15
FC-SLF0905-202YL	5mV,100KHz	0.45 max	2000 $\pm$ 50%	50	0.6	1~5
FC-SLF0905-472YL	5mV,100KHz	0.90 max	4700 $\pm$ 50%	50	0.4	0.3~3
FC-SLF0905-652YL	5mV,100KHz	1.05 max	6500 $\pm$ 50%	50	0.3	0.3~2

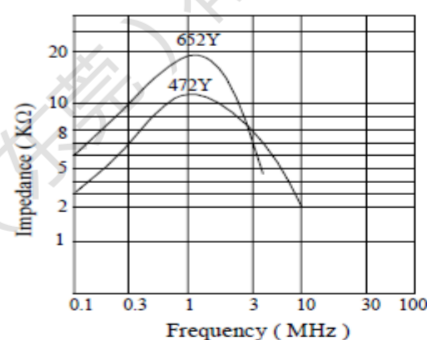
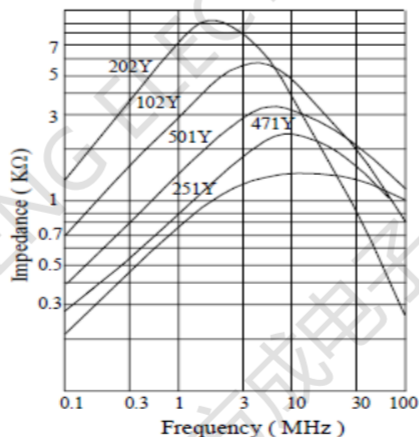
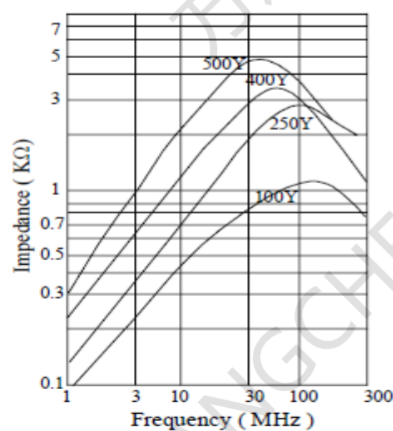
**Electrical Specifications @ 25°C — Operating Temperature -40°C to +125°C.**

Test equipment : Inductance 100Y ~ 500Y ( HP4274A ) ;251Y ~ 652Y ( HP4194A )

Impedance 100Y ~ 202Y ( HP4291A ) 472Y ~ 652Y ( HP4194A )

HI-Pot test ( N1-N2 ) : 500Vac / 60Hz , 3mA , 3sec.

**6. Classification Reflow Profile for SMT components:**



Measuring circuit :

