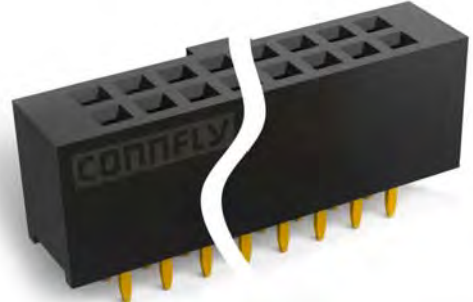
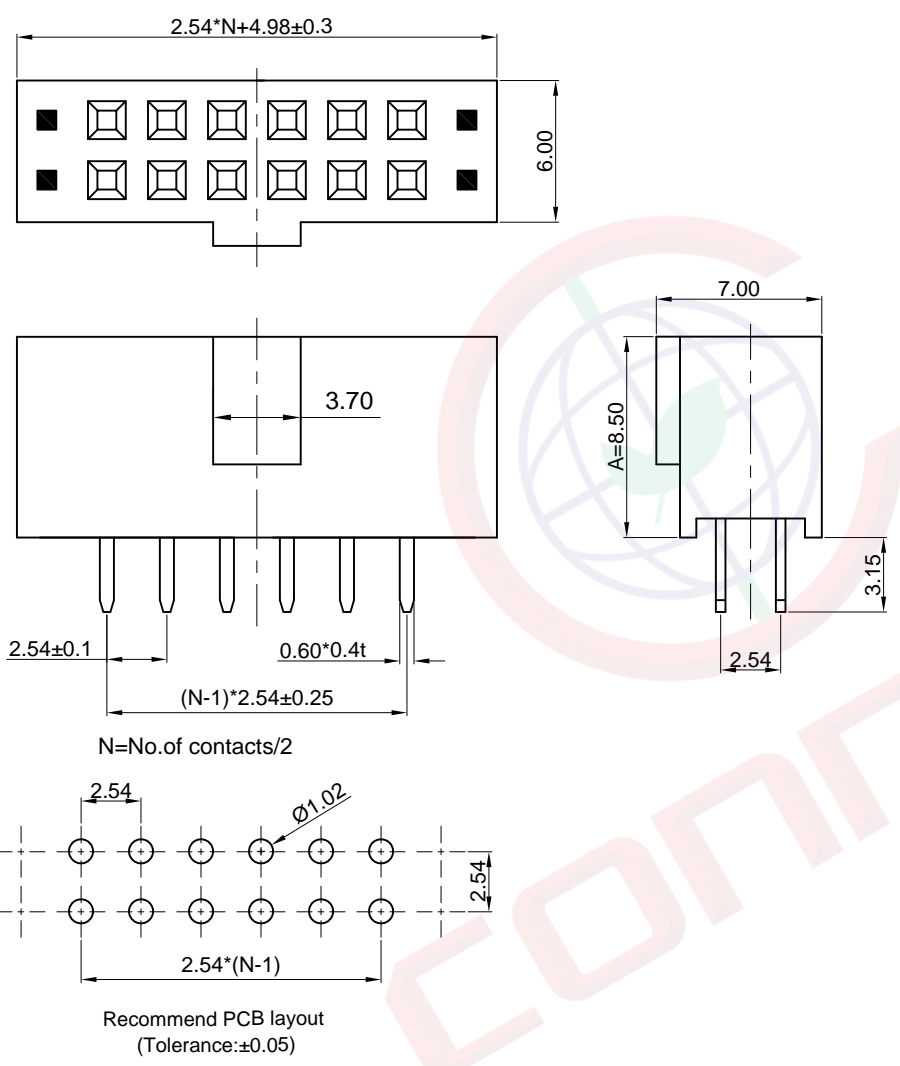


Dept	
Qty	
DC	1
ED	1
IE	1
ISO	1
PD	1
R&D	1
SD	1
QA	1
QC	1
QE	1

The information provided herein is from CONNFLY Electronic Co., Ltd. and is confidential. Any disclosure to a party other than the recipient is prohibited. The intellectual properties and its rights of CONNFLY Electronic Co., Ltd. are reserved. All intellectual properties provided herein are for reference purposes only and does not constitute authorization or its use in any format or manner. CONNFLY may enforce its intellectual property rights at its own discretion; failures or delays to exercise such rights does not constitute a waiver of such rights.

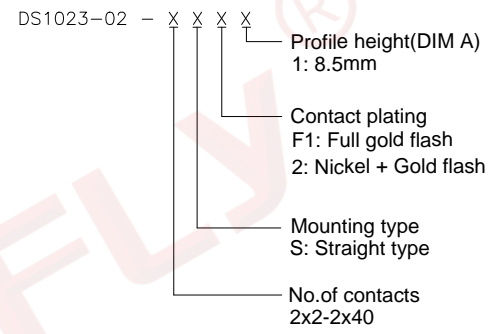


(Series Image-Reference Only)

REV.	DESCRIPTION	DRAWN	CHECKED	APPROVED
A	NEW RELEASE	YCH 08/28/08'		LJC 08/28/08'
B	DRAWING UPDATE	JLZ 09/10/15'	HZW 09/10/15'	LJC 09/10/15'
D	DRAWING UPDATE	JLZ 12/26/18'		

- Notes:
 Specifications:
 1. Contact Resistance: 20mΩ Max.
 2. Insulation Resistance: 1000MΩ Min.
 3. Dielectric Withstanding Voltage: 600V AC(rms) For 1 Minute.
 4. Current Rating:3A.
 5. Temperature: -40°C--+105°C.

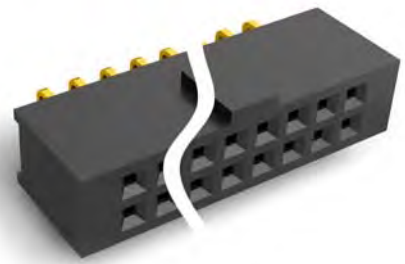
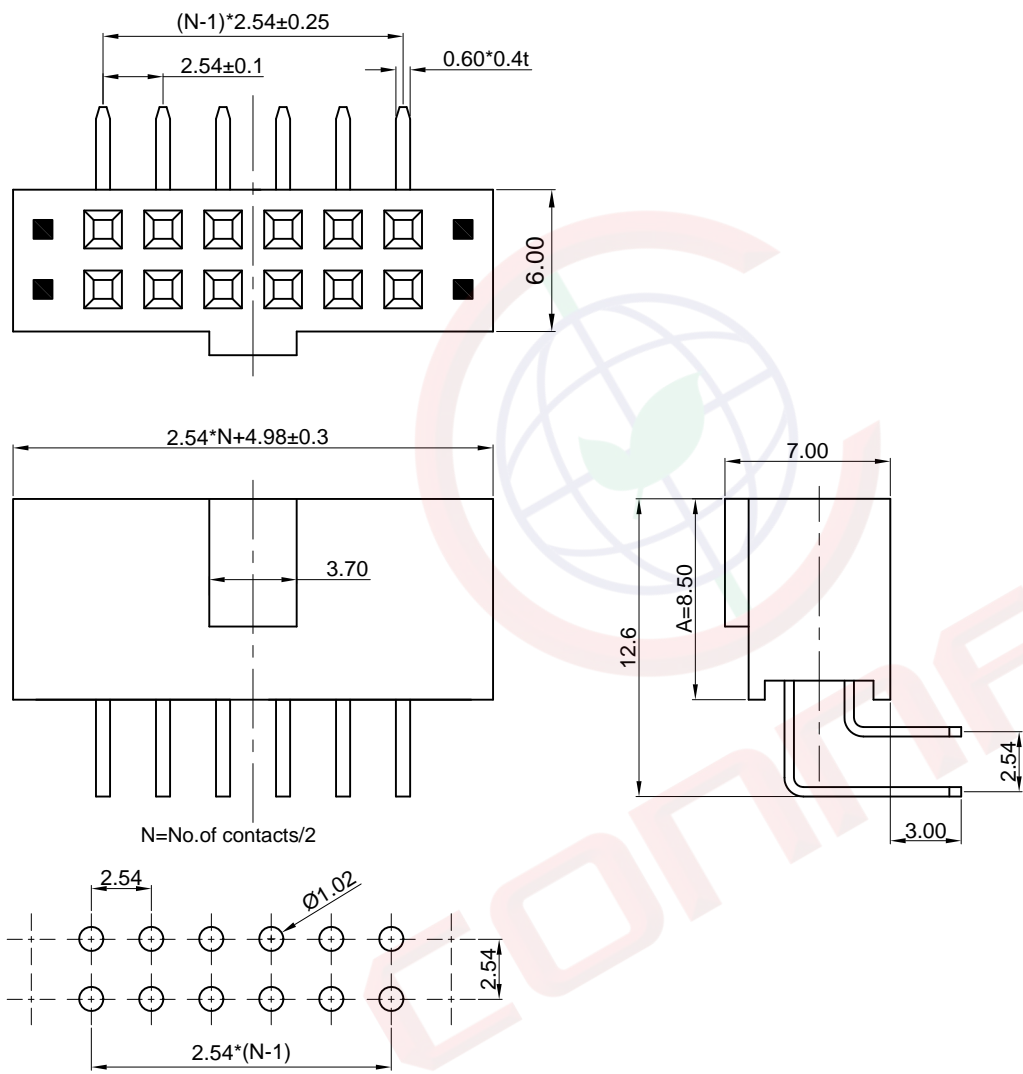
- Materials:
 1. Contact Material: Copper Alloy.
 2. Contact Plating: Gold Plating Over Nickel.
 3. Insulator Materials: PBT,Black,UL94-V0.
 Product Number Code:



GENERAL TOLERANCE		ANGLE TOLERANCE		PROJECTION		TITLE	2.54mm FEMALE HEADER FOR "BOX HEADER" MATING					
X.	±0.60	X.	±5°	UNITS	mm	SERIES	DS1023-02 SERIES					
.X	±0.38	.X	±3°	晨翔电子有限公司 CONNFLY CONNFLY ELECTRONIC CO. LTD								
.XX	±0.25	.XX	±2°									
DRAWING TYPE		CUSTOMER										
SCALE		1:1							SHEET		1 OF 2	
DRAWING NO.		C-DS1023-02-XSXX-C										

Dept	
Qty	
DC	1
ED	1
IE	1
ISO	1
PD	1
R&D	1
SD	1
QA	1
QC	1
QF	1

The information provided herein is from CONFLY Electronic Co., Ltd. and is confidential. Any disclosure to a party other than the recipient is prohibited. The intellectual properties and its rights of CONFLY Electronic Co., Ltd. are reserved. All intellectual properties provided herein are for reference purposes only and does not constitute authorization of its use or modification. This is strictly prohibited without prior written consent from CONFLY. All intellectual properties provided herein are for reference purposes only and does not constitute authorization of its use in any format or manner. CONFLY may enforce its intellectual property rights at its own discretion; failures or delays to exercise such rights does not constitute a waiver of such rights.



(Series Image-Reference Only)

REV.	DESCRIPTION	DRAWN	CHECKED	APPROVED
A	NEW RELEASE	YCH 08/28/08'		LJC 08/28/08'
B	DRAWING UPDATE	JLZ 09/10/15'	HZW 09/10/15'	LJC 09/10/15'
D	DRAWING UPDATE	JLZ 12/26/18'		

Notes:

Specifications:

- Contact Resistance: 20mΩ Max.
- Insulation Resistance: 1000MΩ Min.
- Dielectric Withstanding Voltage: 600V AC(rms) For 1 Minute.
- Current Rating: 3A.
- Temperature: -40°C~+105°C.

Materials:

- Contact Material: Copper Alloy.
- Contact Plating: Gold Plating Over Nickel.
- Insulator Materials: PBT, Black, UL94-V0.

Product Number Code:

DS1023-02 - X X X X

- Profile height(DIM A)
1: 8.5mm
- Contact plating
F1: Full gold flash
2: Nickel + Gold flash
- Mounting type
R: R/A type
- No. of contacts
2x2-2x40

GENERAL TOLERANCE		ANGLE TOLERANCE		PROJECTION		TITLE	2.54mm FEMALE HEADER FOR "BOX HEADER" MATING			
X.	±0.60	X.	±5°	UNITS	mm	SERIES	DS1023-02 SERIES			
.X	±0.38	.X	±3°							
.XX	±0.25	.XX	±2°							
DRAWING TYPE		CUSTOMER		晨翔电子有限公司 CONFLY CONNFLY ELECTRONIC CO. LTD						
SCALE		1:1	SHEET						2 OF 2	
DRAWING NO.		C-DS1023-02-XRXX-C								