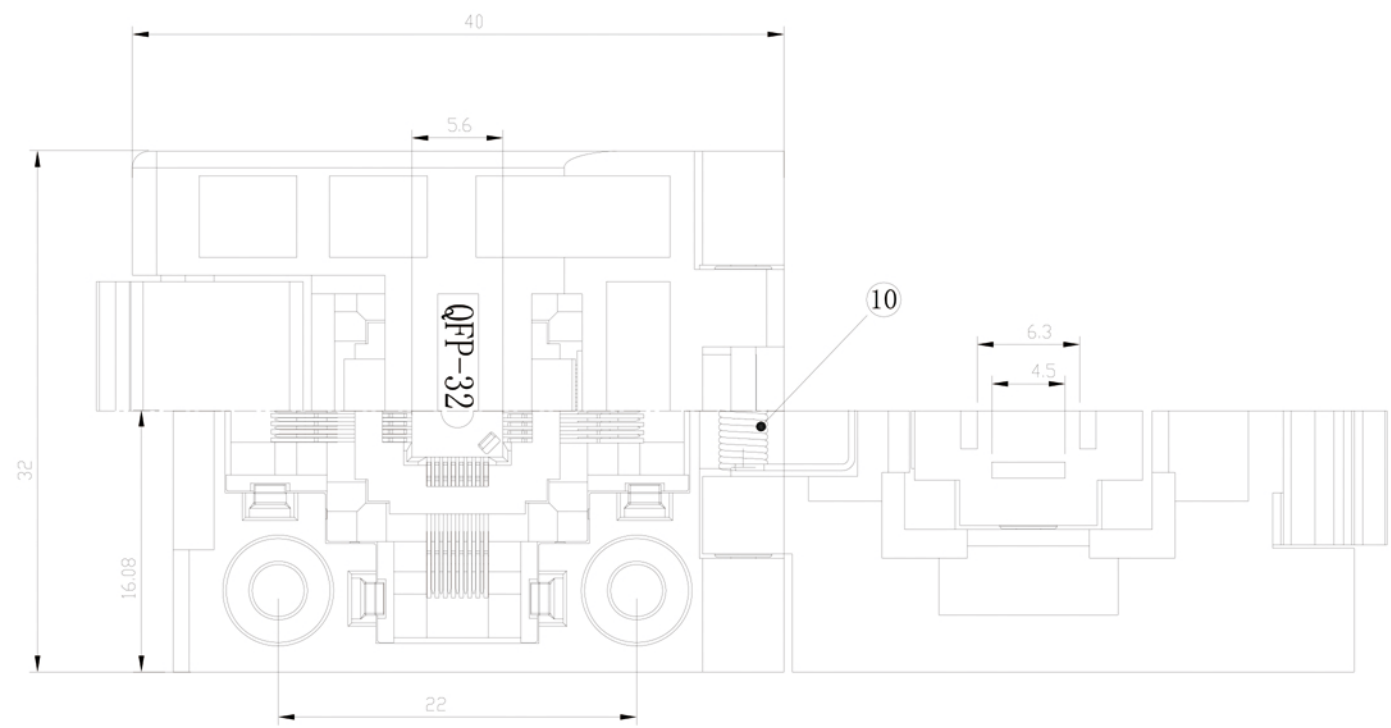
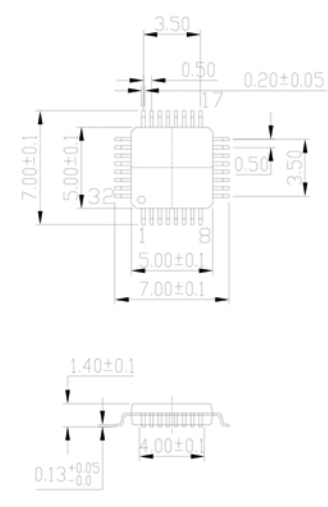


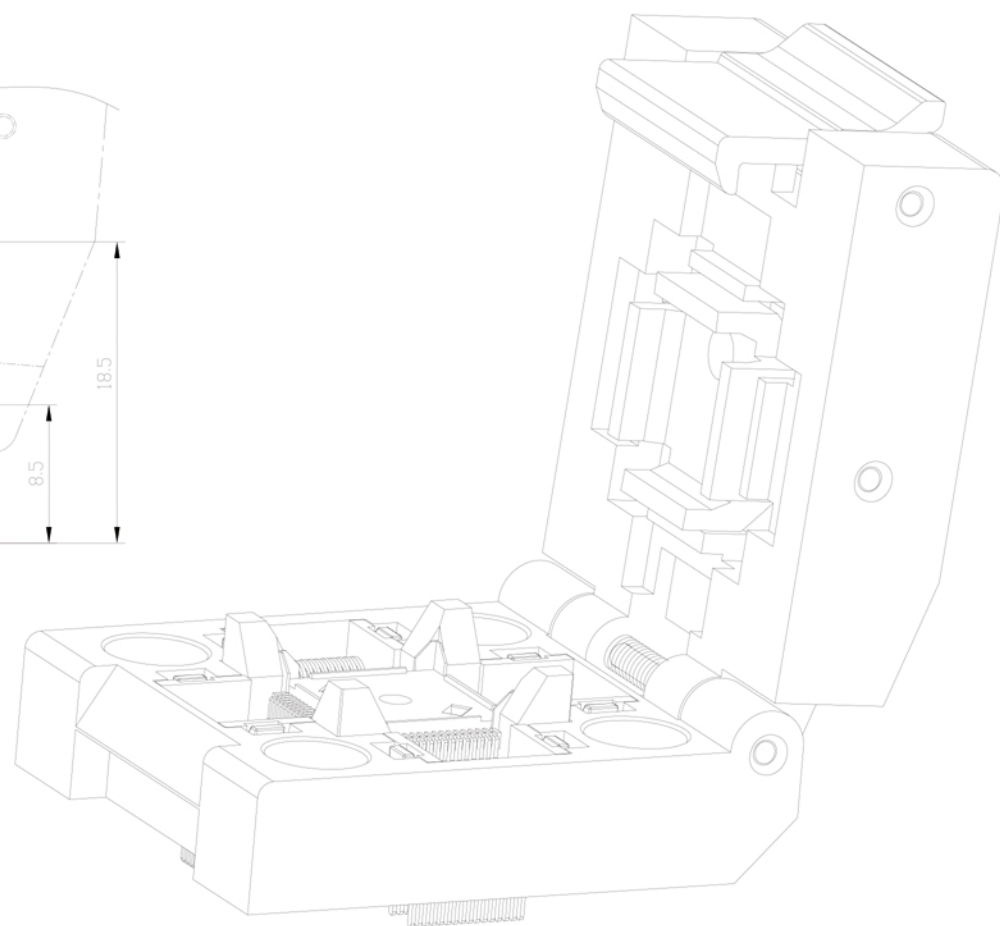
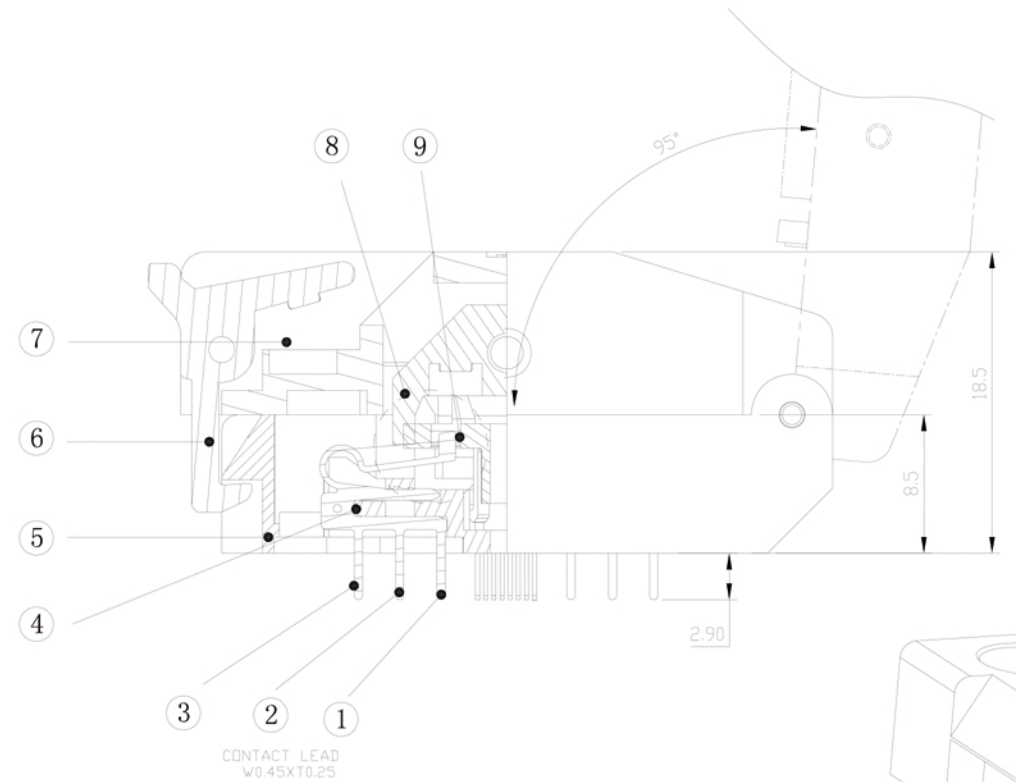
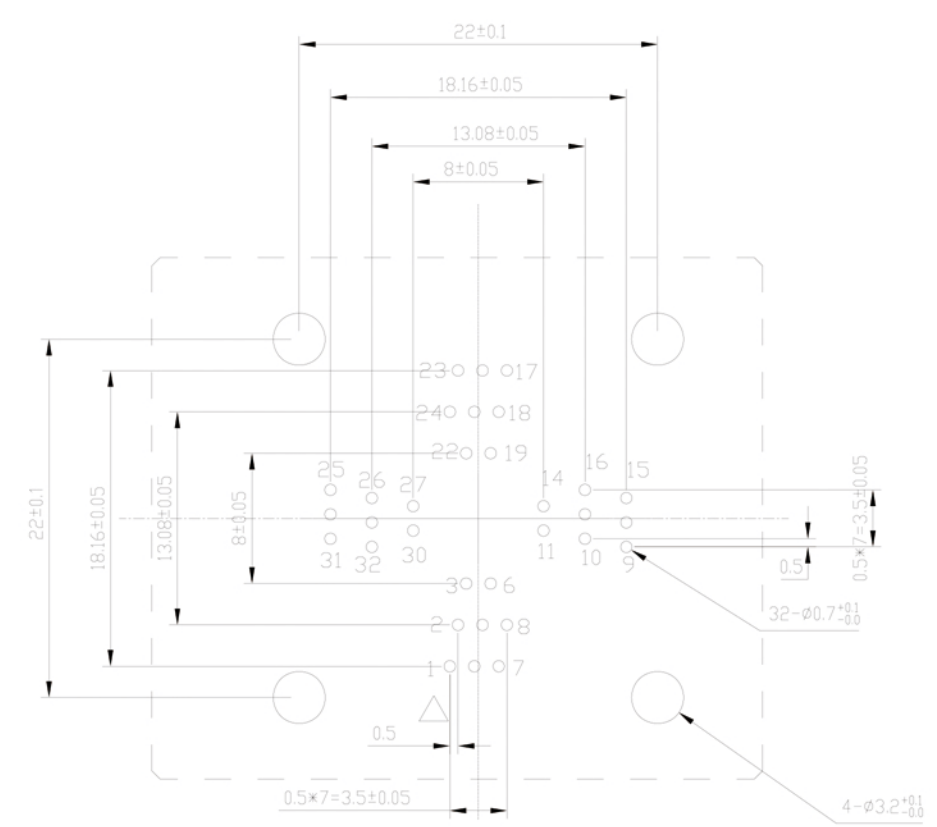
REVISION	DESCRIPTION	CHECK	APP	DATE	REV. NOTICE. NO
1					
2					
3					



APPLICABLE IC

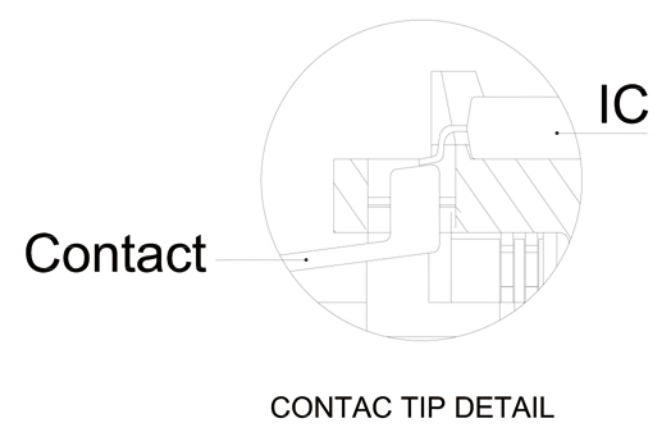


PCB PATTERN (TOP VIEW)



PERFORMANCE

- 1、Insulation Resistance: 1000MΩ Min.At DC 500V
- 2、Dielectric Withstanding Voltage For 1 Minute At AC500V
- 3、Contact Resistance(Initial) 30mΩ MAX at 10mA
- 4、Rated Current: 1.0A.
- 5、Operation Temperature range -55°C ~+125°C
- 6、Insertion Min15,000 cycle (Mechanical)
- 7、Material: Body:PAI,PES; Contact:BeCu,Au plating(Ni-base)



No	Part Number	Name	Material	Q/ty	Note
10	30-B-4515X	SPRING	SUS	1	FDR COVER
9	QFP32-0.5-FFC	FLOATING CARRIER	PEI/PES	1	BLACK
8	QFP32-0.5-FSB	SWINGING BLOCK	PEI/PES	1	BLACK
7	QFP32-0.5-FCR	COVER	PEI/PES	1	BLACK
6	QFP32-0.5-FLH	LATCH	PEI/PES	1	BLACK
5	QFP32-0.5-FBY	BODY	PEI/PES	1	BLACK
4	QFP32-0.5-FCE	CORE	PEI/PES	1	BLACK
3	QFP32-0.5-FCTC	CONTACT	BeCu	12	FDR COVER
2	QFP32-0.5-FCTB	CONTACT	BeCu	12	BLACK
1	QFP32-0.5-FCTA	CONTACT	BeCu	8	Au PLATING

TOLERANCE	PROJECTION	GENERAL TOLERANCES	±0.10	TITLE	QFP32-0.5 SOCKET
X. ± 0.50	DIMENSION: mm	R E V	A	CLASS	QFP32-0.5-CP01NT
X. X ± 0.25	APP:	SCALE: 1:1		DRW. NO	01
X. XX ± 0.10	CHECK:	DATE:			
X. XXX ± 0.05	DEGK: ENG03	DATE: 20170315			

