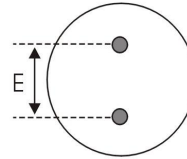
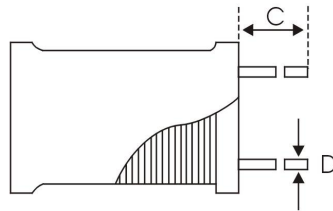
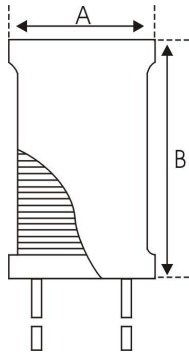


规格承认

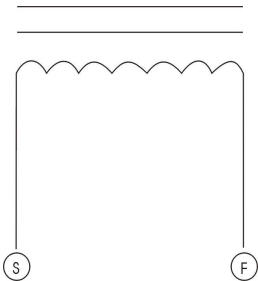
CUSTOMER		CUSTOMER'S P/S	
TSSUE DATE	2023. 08. 29	OUR P/N	XR8*10-332K-L

1. 外观尺寸图 DIMENSIOS



A=9.5MAX
 B=11.5MAX
 C=13.5±2.0
 D=Φ0.6±0.05
 E=5.0±0.10

2. 接线图 CONNECTION (BOTTOM VIEW)



3. 绕线规格 WINDING SPEC

端子 TERMINZL	线 WIRE	圈数 TURNS	绕线方式 WINDING METHOD
S---F	Φ0.17 2UEW	310 TS (REF)	CLOSED

4. 电气特性 ELECTRONICS CHARACTERISTIC

客户代码 Part No.	厂方代码 OUR Part No.	电感量 Inductance at 1KHz	直流电阻 D. C. R max.	定格电流 I. D. C max.	标识 Marking	规格代码 Sample No.
	XR8*10-332K-L	3.3mH±10%	6.0 Ω	160mA	---	---

备注:

OPERATING TEMP. : -40°C ~ +85°C

INDUCTANCE DROP=10% TYP. AT IDC.

制作 DRW	审核 CHK	确认 APPD	祥如电子
洪碧华	关菊花	刘丰	
2023. 08. 29	2023. 08. 29	2023. 08. 29	

