



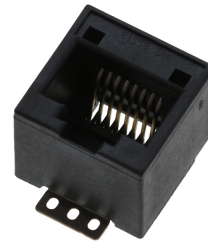
Part Number : [855135113](#)

Product Description : Modular Jack, Vertical, Top Entry, Surface Mount, 8/8, Low Profile, Pick-and-Place Polyimide Tape, 13" Reel

Series Number : 85513

Status : Active

Product Category : Modular Jacks and Plugs



Documents & Resources

Drawings

[Drawing 855135113_sd.pdf](#)

3D Models and Design Files

[3D Model 855135113_stp.zip](#)

[3D Model PDF 855135113.pdf](#)


Specifications

[Application Specification AS-85513-001-001.pdf](#)

[Product Specification PS-85513-002-001.pdf](#)

Product Environment Compliance

Compliance

GADSL/IMDS	Not Relevant
China RoHS	
EU ELV	Not Relevant
Low-Halogen Status	Low-Halogen per IEC 61249-2-21
REACH SVHC	Not Contained per D(2023)3788-DC (14 Jun 2023)
EU RoHS	Compliant per EU 2015/863

[Multiple Part Product Compliance Statements](#)

- Eu RoHS
- REACH SVHC
- Low-Halogen

[Multiple Part Industry Compliance Documents](#)

- IPC 1752A Class C

- IPC 1752A Class D
- Molex Product Compliance Declaration
- IEC-62474
- chemSHERPA (xml)

EU RoHS Certificate of Compliance

Part Details

General

Status	Active
Category	Modular Jacks and Plugs
Series	85513
Description	Modular Jack, Vertical, Top Entry, Surface Mount, 8/8, Low Profile, Pick-and-Place Polyimide Tape, 13" Reel
Comments	Reflow Capable, Small Panel Cutout
Component Type	PCB Jack
Magnetic	No
Performance Category	3
Power over Ethernet (PoE)	N/A
Product Family	Magnetic and Modular Jacks/Plugs
Product Name	Modular Jack 8/8,RJ45
UPC	887191677644

Electrical

Current - Maximum per Contact	1.5A
Shielded	No
Voltage - Maximum	125V DC

Physical

Boot Color	N/A
Color - Resin	Black
Durability (mating cycles max)	2500
Inverted / Top Latch	No
Jack Height	12.70mm
Lightpipes/LEDs	None

Material - Metal	Copper Alloy
Material - Plating Mating	Gold over Palladium Nickel
Material - Plating Termination	Tin
Material - Resin	High Temperature Thermoplastic
Net Weight	2.879/g
Orientation	Vertical (Top Entry)
Packaging Type	Embossed Tape on Reel
PCB Locator	No
PCB Retention	Yes
Pitch - Mating Interface	1.02mm
Pitch - Termination Interface	1.27mm
Plating min - Mating	0.051μm, 1.016μm
Plating min - Termination	1.905μm
Port Configuration	1x1
Positions / Loaded Contacts	8/8
Temperature Range - Operating	-40° to +85°C
Termination Interface Style	Surface Mount
Waterproof / Dustproof Type	No
Wire/Cable Type	N/A