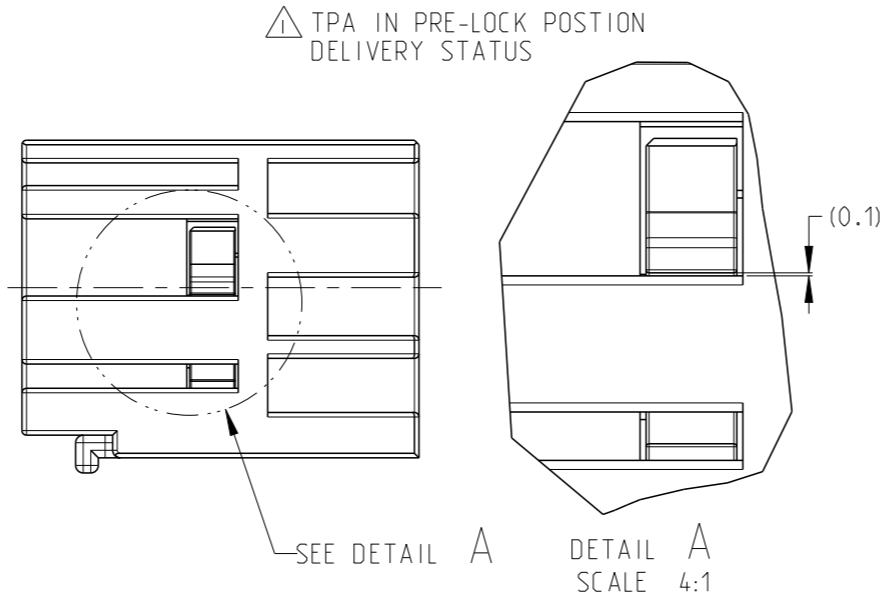
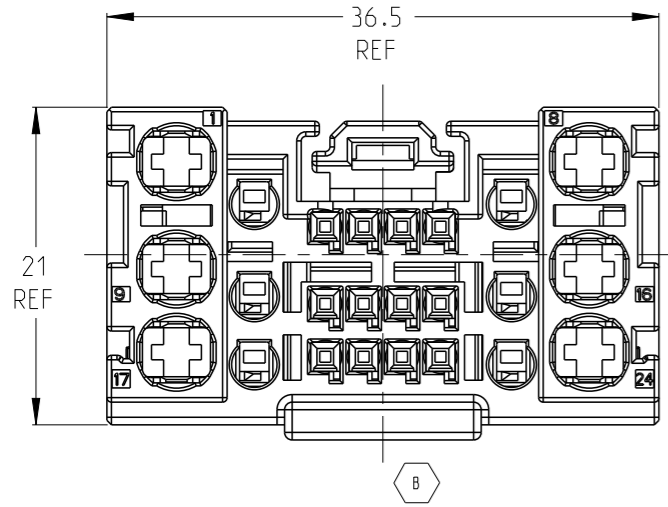
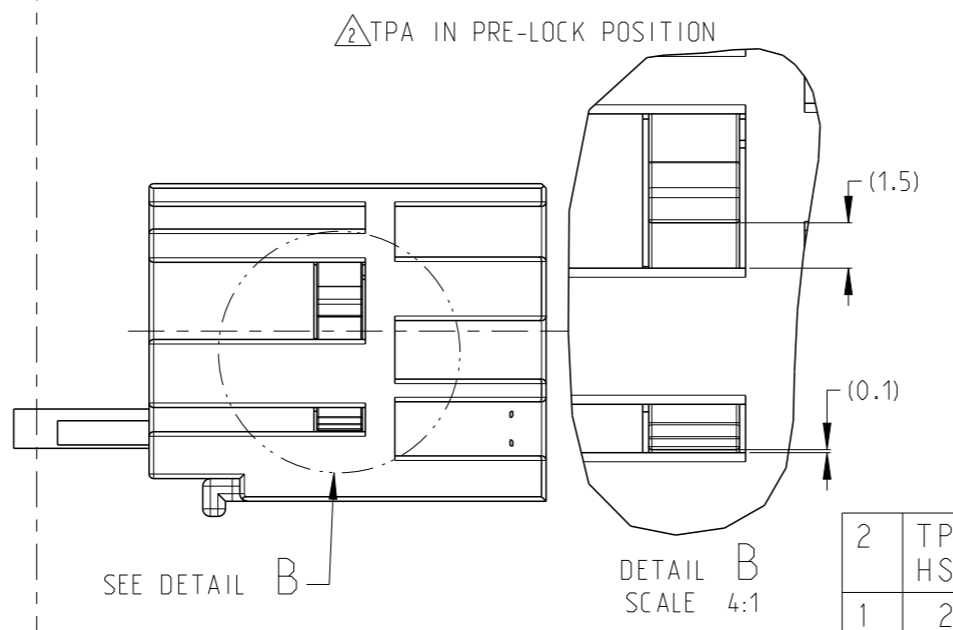
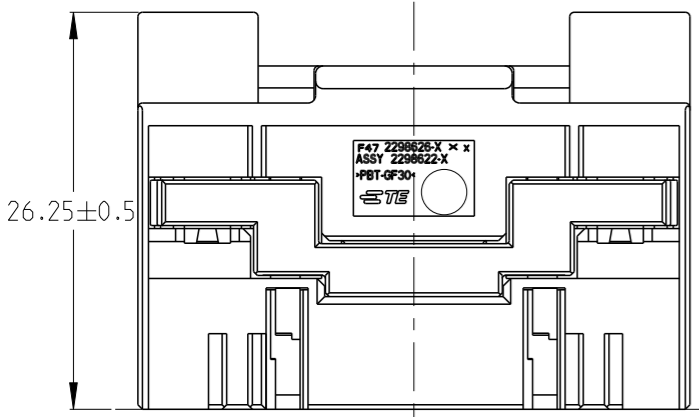
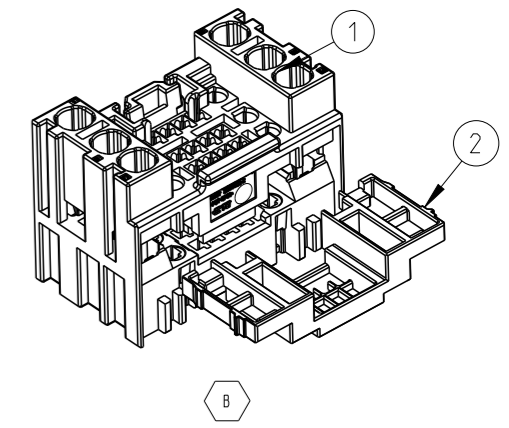


THIS DRAWING IS UNPUBLISHED. RELEASED FOR PUBLICATION 20  
 © COPYRIGHT 20 BY - ALL RIGHTS RESERVED.

REVISIONS					
P	LTR	DESCRIPTION	DATE	DWN	APVD
	A	RELEASE DRAWING	19JUL2016	A.D	SY.W
	A3	ECR-17-015556	21NOV2017	A.D	E.J
	A4	ECR-18-010243	06SEP2018	A.D	SY.W
	B	ECR-20-012381	26FEB2021	A.D	Z.J

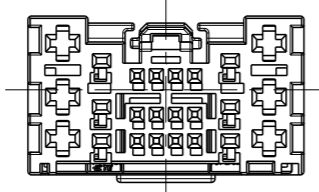
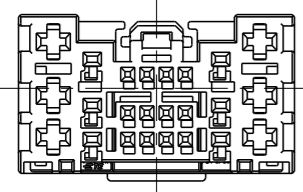


NOTE:  
 △1 TPA IN PRE-LOCK POSITION WHEN DELIVERY.  
 △2 TPA IN END-LOCK POSITION.  
 3. PRODUCT SPEC 108-101431,  
 APPLICATION SPEC 114-101077.  
 4. MATING PART IS X-2298627-X  
 5. APPLICABLE CONTACT AND WIRE SIZE SEE BELOW:



CONTACT SIZE (MM)	WIRE SIZE (MM <sup>2</sup> )	INSULATION DIA (MM)	CONTACT	PLATING
1.2mm	0.22-0.35	1.1-1.4	2296537-1	PRE-TIN
	0.5-0.75	1.4-1.9	2296537-2	PRE-TIN
	1.0-1.5	1.9-2.4	2296537-3	PRE-TIN
0.64mm	>0.2-0.35	0.9-1.6	928999-1	PRE-TIN
	0.5-0.75	1.4-1.9	5-928999-1	PRE-TIN
			963715-1	PRE-TIN
2.8mm	0.5-1.0	1.4-2.1	1241388-1	PRE-TIN
	>1.0-2.5	2.2-3.0	1241390-1	PRE-TIN
	>2.5-4.0	2.7-3.7	1-968853-1	PRE-TIN

2	TPA REC HSG, 24POS, HYBRID	NATURE	PBT-GF 30	1	1	1
1	24POS, HYBRID, REC HSG, UNSLD, COD B	NATURE	PBT-GF 30	1		
		BLACK				
NO	DESCRIBE	BROWN				1
		COLOR	MATERIAL	*-1	*-2	2-*-1
				ASSY P/N		



2298622-1  
2-2298622-1  
CODING A

2298622-2  
CODING B

THIS DRAWING IS A CONTROLLED DOCUMENT.

DIMENSIONS:	TOLERANCES UNLESS OTHERWISE SPECIFIED:
mm	
Ø PLC	±
1 PLC	±0.1
2 PLC	±0.01
3 PLC	±0.001
4 PLC	±0.0001
ANGLES	±
MATERIAL	FINISH
-	-
-	-

DWN	A.DANG	19JUL2016
CHK	SU.WANG	19JUL2016
APVD	SY.WANG	19JUL2016
PRODUCT SPEC	-	-
APPLICATION SPEC	-	-
WEIGHT	-	-
CUSTOMER DRAWING		

**STE** TE Connectivity

NAME: 24POS, HYBRID, REC HSG ASSY, UNSLD

SIZE: A3 CAGE CODE: - DRAWING NO: C-2298622 RESTRICTED TO: -

SCALE: 1:1 SHEET: 1 OF 1 REV: B