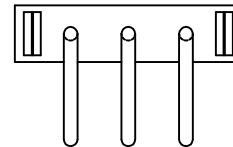
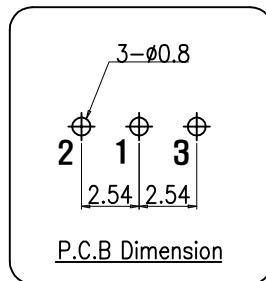
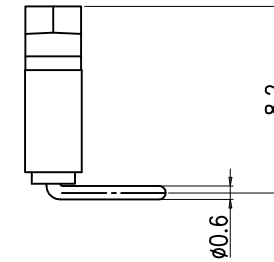
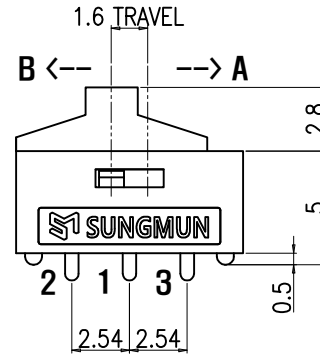
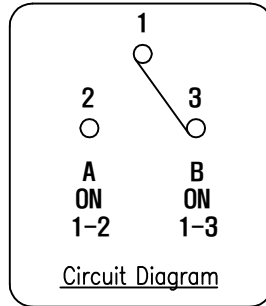
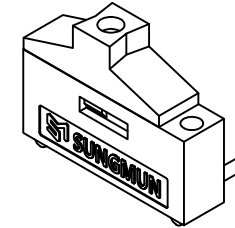
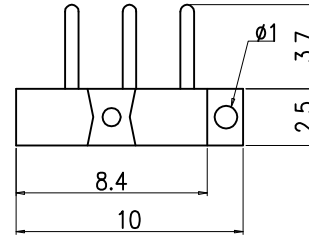


REV NO.	DATE	REVISION	DR	CH	APP

# SPECIFICATION

1. Rating : DC12V 0.5A~24V 0.3A.
2. Contact Resistance : 30mΩ Max.
3. Travel : 1.6mm.
4. Operating Force : 250 ± 150gf.
5. Life Cycle : 2,000 Cycle (with load).



DRAW/DESIGNED	CHECKED	APPROVED		G.TOL ±0.3	TITLE	MINI SLIDE SWITCH	
H.S LEE	K.N KIM	W.J LEE		UNIT	SCALE	MODEL NO.	SSIL-10H-0RK
2022-12-06	2022-12-06	2022-12-06	mm	N:S	NO.	SSIL-10H-0K-01	01
				SIZE	DRAW NO.	SSIL-10H-0K-01	
				A4	NO.		