

产品承认书

SPECIFICATION FOR APPROVAL

CUSTOMER: _____

CUSTOMER P/N: _____

CND-TEK P/N. : _____ CB0679S

DESCRIPTION: _____ BMS Signal Transformer

REF NO: _____ QTC-002

REV/NO: _____ A/0

DATE: _____ 2023/03/02

ATTACHMENT:			
<input checked="" type="checkbox"/>	SPECIFICATION		
<input checked="" type="checkbox"/>	SAMPLE	Q'TY OF SAMPLES	PCS

	√	CUSTOMER'S SIGNATURE	REMARK
FULL APPROVED			
CONDITIONAL APPROVED			
REJECTED			

CND-TEK

CB0679S

BMS Signal Transformer

V1.0.2 Feb 2,2023

CND-TEK

深圳磁联达电子有限公司

Shenzhen CND-TEK Electronics Co.,Ltd

公司地址: 深圳市南山区西丽镇街道百旺社区牛城村牛城路221号505

TEL: 86-755-29016433 FAX:86- 755-27652977

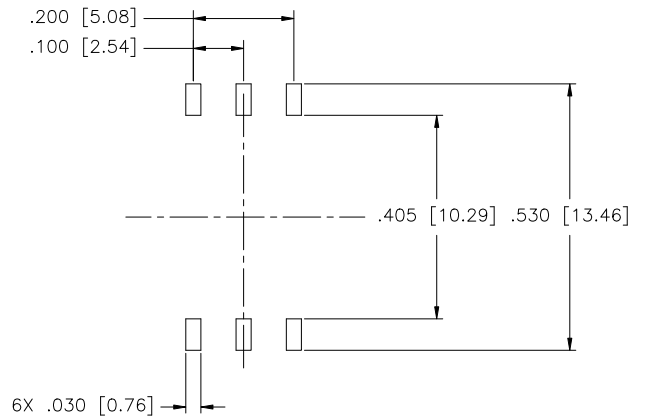
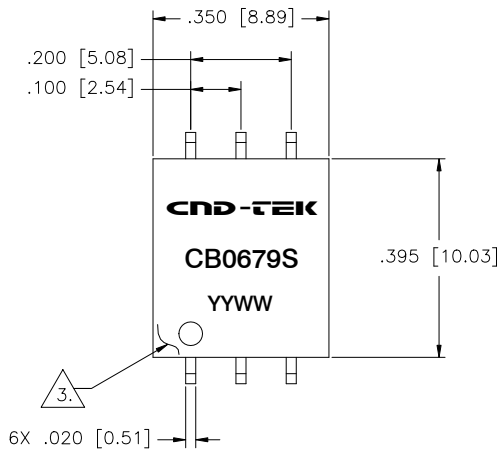
Email: sales2@cd-tek.com

Http: //www.cd-tek.com

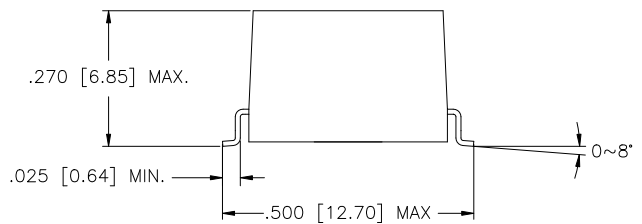
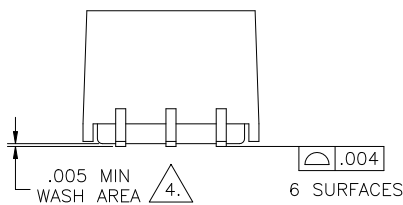
1. FEATURES:

- 1.1 One channel with choke
- 1.2 Supports serial daisy chain / IsoSPI
- 1.3 Operating temperature: -40 to +125 °C
- 1.4 Storage temperature: -50 to +125 °
- 1.5 800 Vdc for 15 Years working voltage
- 1.6 Hi-Pot: 4300 Vdc
- 1.7 AEC-Q200 compliant
- 1.8 RoHS compliant

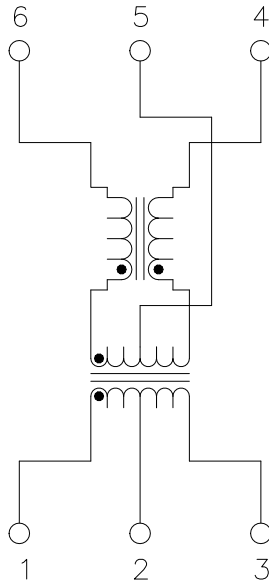
2. DIMENSIONS & MARKING



SUGGESTED LAND PATTERN



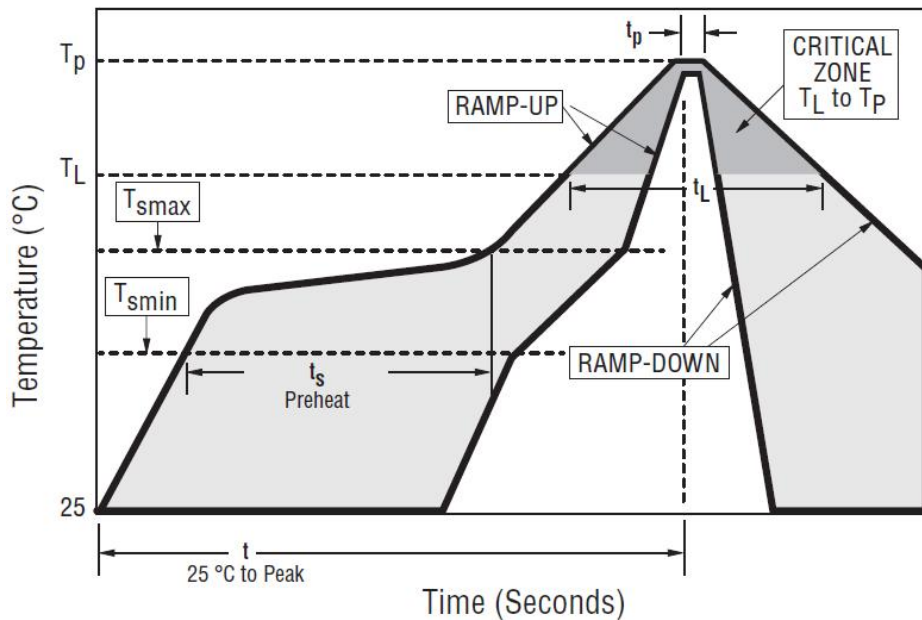
3. SCHEMATICS:



4. ELECTRICAL SPECIFICATIONS @25°C

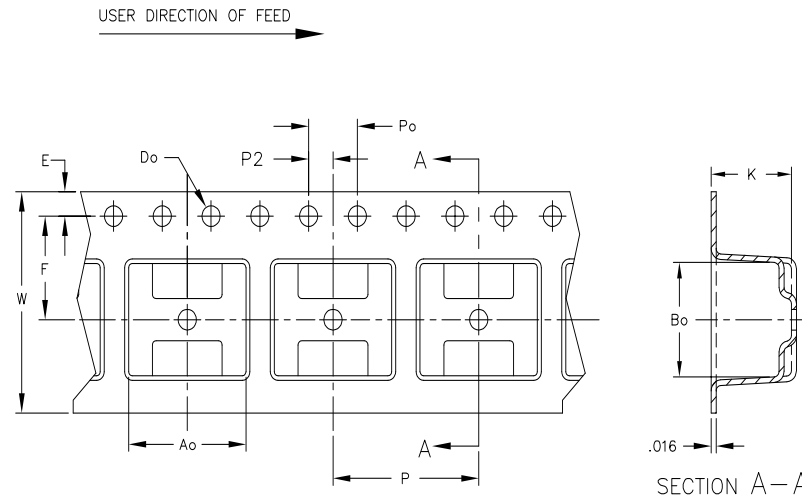
4.1 Inductance OCL(-40°C~+125°C):	60μH Min @ 100KHz 0.1V
4.2 DC Resistance:	Transformer Side: 0.45Ω max. CM Choke Side: 0.85 Ω max.
4.3 Turns Ratio:	1CT : 1CT±2%
4.4 Insertion Loss:	4 MHz -0.30dB Max
4.5 Return Loss (Z out = 100 ohms):	4 MHz 20dB Min
4.6 Common Mode Rejection Ratio:	1-10 MHz -35dB TYP 10-1000 MHz -20dB TYP
4.7 Leakage Inductance:	0.5uH max @100KHz,0.1V
4.8 Design Construcyion:	Funcyional Insulation
4.9 Polarity:	PER Schematic
4.10 Hi-Pot:	4300 VDC 1 mA, 60 sec.
4.11 Insulation Resistance:	400 Megaohms Min
4.12 Working Voltage:	800 Vdc
4.13 Qualification:	PER AEC-Q200
4.14 Operating Temperature Range:	-40°C~+125°C
4.15 Storage Temperature Range:	-50°C~+125°C

5. Recommended Lead Free IR Reflow Soldering Curve :

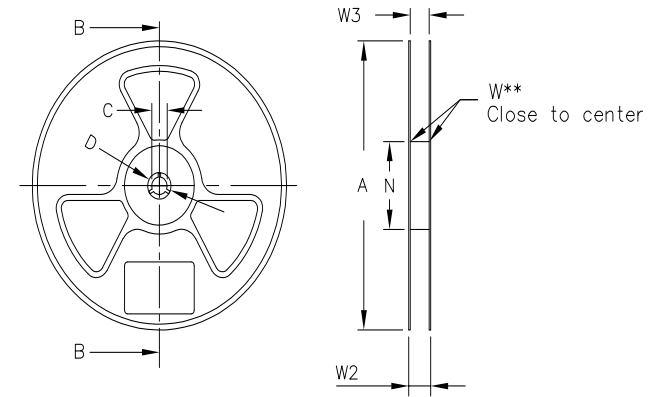


5.1 Profile Feature	Pb Free Assembly
5.2 Average Ramp Rate (T_{smax} to T_p)	3°C/second max.
5.3 Preheat- Temperature Min. (T_{smin})	150°C
5.4 Preheat- Temperature Max. (T_{smax})	200°C
5.5 Preheat- Time (t_{smin} to t_{smax})	60seconds
5.6 Time Maintained Above - Temperature (T_L) Time	217°C
5.7 Maintained Above - Time (t_L)	60 seconds
5.8 Peak Temperature (T_p)	245°C MAX
5.9 Time within 5 °C of Actual Peak Temperature (t_p)	20-40 seconds
5.10 Ramp-Down Rate	6°C/second max.
5.20 Time 25 °C to Peak Temperature	8 minutes max.

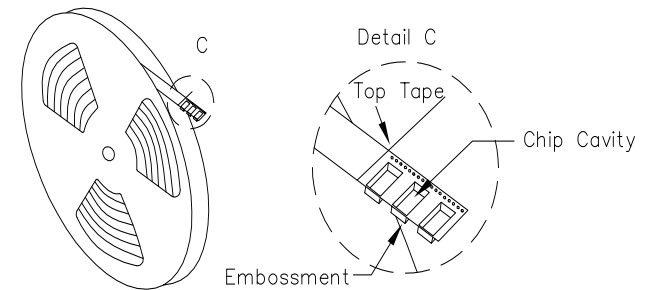
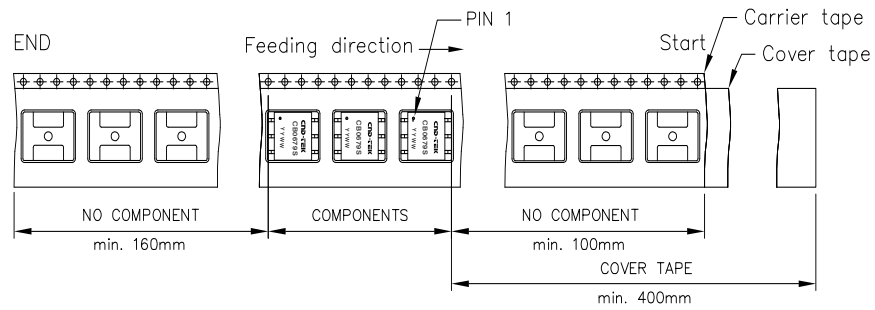
Packaging Specifications



ITEM	W	P	A ₀	B ₀	K	T	C	D ₀	E	F	P ₀
DIM	16	12	9.65	8.28	6.6	0.40		1.5	1.75	7.5	4.0



	A	B	C	D	N	W1	W2	W3	W3
Tolerance		min.	±0.8	min.	min.	+2.0	max.	min.	max.
Tape width mm	330.00	1.50	13.00	20.20	100.00	16.4	18.4	16.4	18.39



ALL DIMENSIONS ARE IN MILLIMETERS WITH THE FOLLOWING TOLERANCES: ±0.10

COMPONENTS PER REEL: 400 pcs