

# 产品承认书

## SPECIFICATION FOR APPROVAL

CUSTOMER: \_\_\_\_\_

CUSTOMER P/N: \_\_\_\_\_

CND-TEK P/N. : \_\_\_\_\_ CB0606S

DESCRIPTION: \_\_\_\_\_ BMS Signal Transformer

REF NO: \_\_\_\_\_ QTC-002

REV/NO: \_\_\_\_\_ A/0

DATE: \_\_\_\_\_ 2023/03/02

ATTACHMENT:			
<input checked="" type="checkbox"/>	SPECIFICATION		
<input checked="" type="checkbox"/>	SAMPLE	Q'TY OF SAMPLES	PCS

	√	CUSTOMER'S SIGNATURE	REMARK
FULL APPROVED			
CONDITIONAL APPROVED			
REJECTED			

**CND-TEK**

# CB0606S

**BMS Signal Transformer**

V1.0.2 Feb 2,2023

**CND-TEK**

深圳磁联达电子有限公司

**Shenzhen CND-TEK Electronics Co.,Ltd**

公司地址: 深圳市南山区西丽镇街道百旺社区牛城村牛城路221号505

TEL: 86-755-29016433 FAX:86- 755-27652977

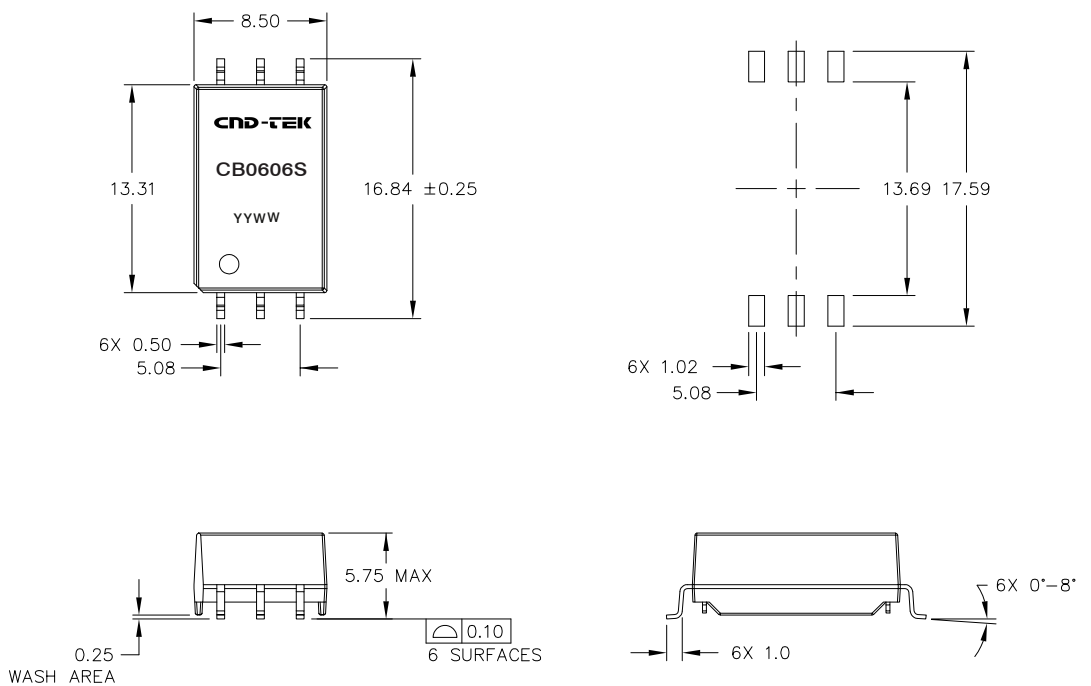
Email: sales2@cd-tek.com

Http: //www.cd-tek.com

## 1. FEATURES:

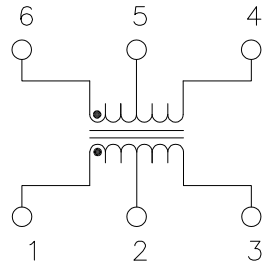
- 1.1 One channel with choke
- 1.2 Supports serial daisy chain / IsoSPI
- 1.3 Change OCL from 135uH Min,370uH MAX to 150uH Min 370uH Max
- 1.4 Operating temperature: -40 to +125 °C
- 1.5 Storage temperature: -50 to +125 °
- 1.6 1000 Vdc working voltage
- 1.7 Hi-Pot: 4300 Vdc
- 1.8 AEC-Q200 compliant
- 1.9 RoHS compliant

## 2. DIMENSIONS & MARKING



DIMENSIONS ARE IN MILLIMETERS WITH THE FOLLOWING TOLERANCES:  
X.X= ±0.25  
X.XX= ±0.13

### 3. SCHEMATICS:

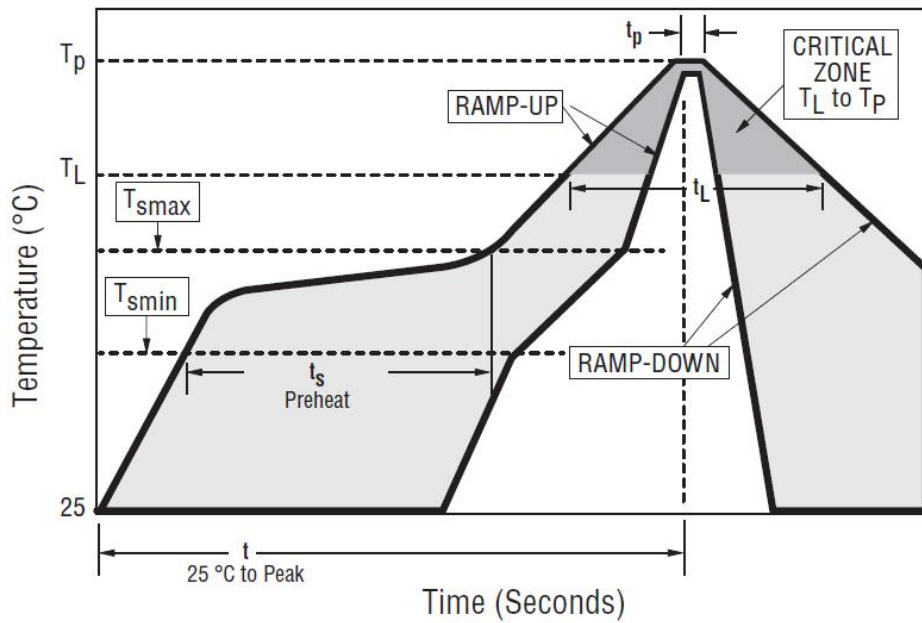


SCHEMATIC

### 4.ELECTRICAL SPECIFICATIONS @25°C

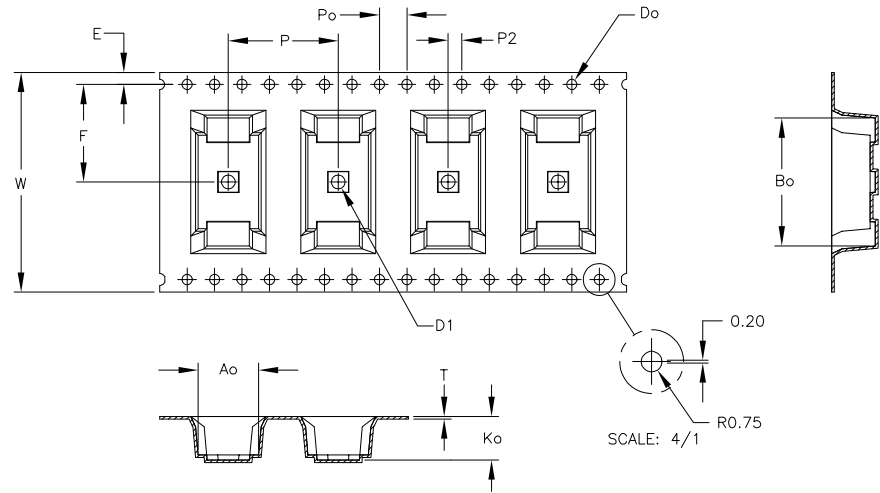
4.1 Inductance OCL:	135 $\mu$ H Min 370 $\mu$ H Max @ 100KHz 0.1V(-40°C $\leq$ T $\leq$ -30°C) 150 $\mu$ H Min 370 $\mu$ H Max @ 100KHz 0.1V(-30°C $\leq$ T $\leq$ 125°C)
4.2 Leakage Inductance:	0.50 $\mu$ H Max @ 100KHz 0.1V
4.3 DC Resistance:	0.45 $\Omega$ MAX
4.4 Turns Ratio:	1CT : 1CT $\pm$ 2%
4.5 Insertion Loss:	4 MHz -0.25dB Max
4.6 Return Loss (Z out = 100 ohms):	4 MHz 20dB Min
4.7 Polarity:	Per Schematic
4.8 Hi-Pot:	4300 VDC 1 mA, 60 sec.
4.9 Working Voltage:	1000 Vdc
4.10 Design Construction:	Basic Insulation per ISO6469/IEC60664
4.11 Operating Temperature Range:	-40°C~+125°C
4.12 Storage Temperature Range:	-50°C~+125°C
4.13 Creepage Dsistance:	>11mm

## 5. Recommended Lead Free IR Reflow Soldering Curve :

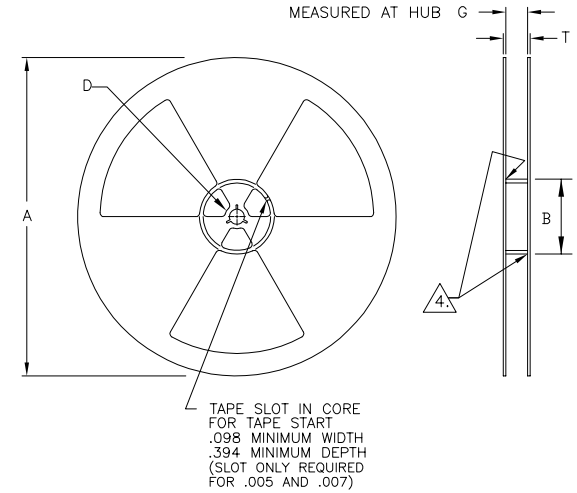


5.1 Profile Feature	Pb Free Assembly
5.2 Average Ramp Rate ( $T_{smax}$ to $T_p$ )	3°C/second max.
5.3 Preheat- Temperature Min. ( $T_{smin}$ )	150°C
5.4 Preheat- Temperature Max. ( $T_{smax}$ )	200°C
5.5 Preheat- Time ( $t_{smin}$ to $t_{smax}$ )	60seconds
5.6 Time Maintained Above - Temperature ( $T_L$ ) Time	217°C
5.7 Maintained Above - Time ( $t_L$ )	60 seconds
5.8 Peak Temperature ( $T_p$ )	245°C MAX
5.9 Time within 5 °C of Actual Peak Temperature ( $t_p$ )	20-40 seconds
5.10 Ramp-Down Rate	6°C/second max.
5.20 Time 25 °C to Peak Temperature	8 minutes max.

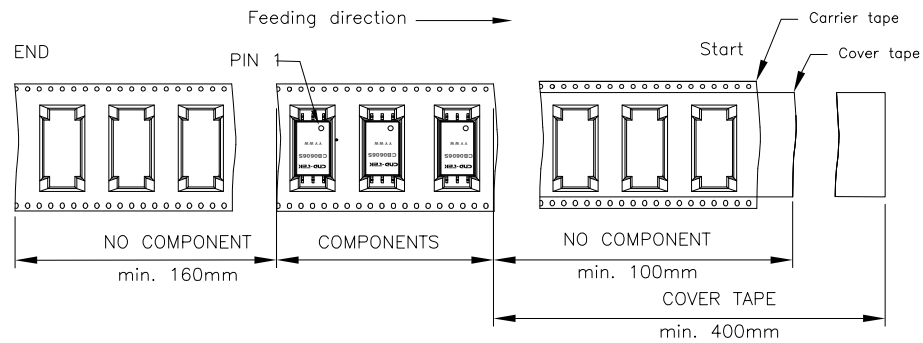
# Packaging Specifications



ITEM	W	Ao	Bo	Ko	K1	P	F	E	Do	D1	Po	P2	T
DIM	32.00 ±0.30	8.8 ±0.10	18.6 ±0.10	6.35 ±0.10		16.00 ±0.10	14.2 ±0.10	1.75 ±0.10	1.50 ±0.10 -0.00	2.0 ±0.10 -0.00	4.00 ±0.10	2.00 ±0.10	0.40 ±0.05



	A	B	D	T	G	G
Tolerance		min.	min.	max.	min.	max.
ape width   mm	330.00	100.00	20.20	38.4	32.4	34.4



COMPONENTS PER REEL: 600 pcs

