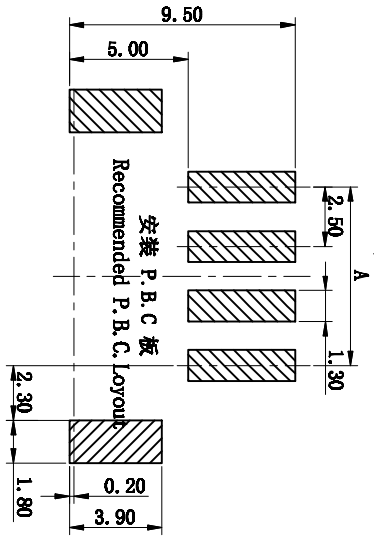
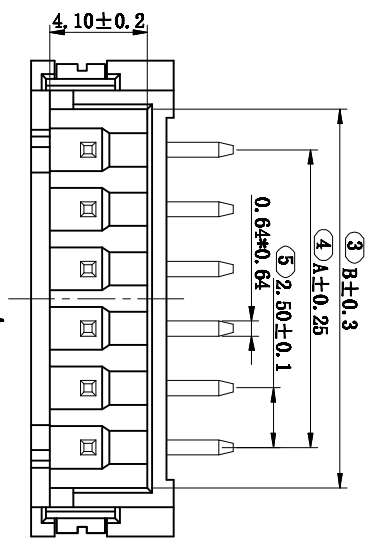
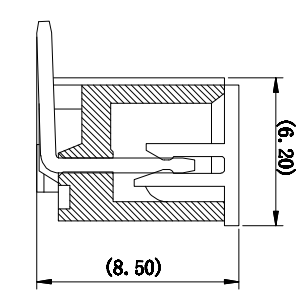
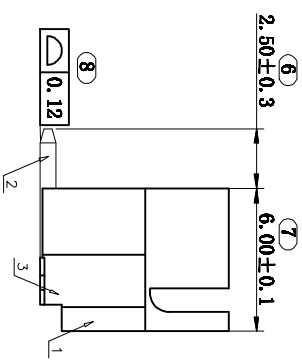
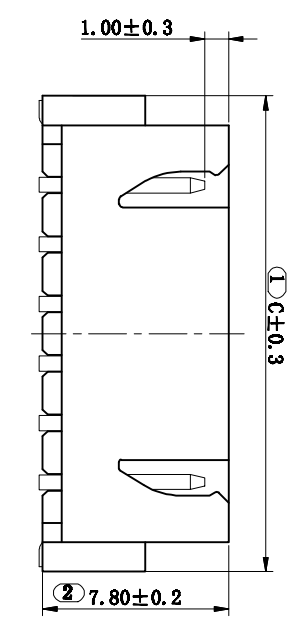


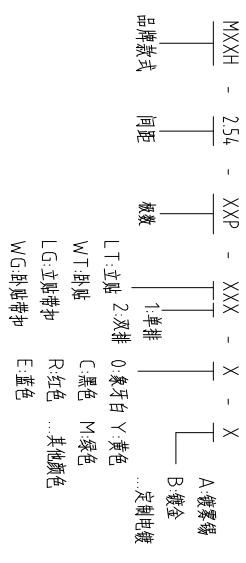
注：本图仅供参考，如有疑问，请联系本公司。



- 技术指标：**
- 1、塑件表面应光洁、无毛刺、明显收缩、缺陷、裂纹等现象；
  - 2、温度范围：-25° C~+85° C；
  - 3、额定电流：3A AMPS(24#)；
  - 4、额定电压：250V, AC, DC(等效)；
  - 5、接触电阻：≤0.03Ω；
  - 6、绝缘电阻：≥1000MΩ；
  - 7、耐压：1000V, AC/minute.

REV	ECN NO.	CONTENT	CHK	DATE
1		孔位 A B C		
2		2.5 5.9 10.0		
3		5.0 8.4 12.5		
4		7.5 10.9 15.0		
5		10.0 13.4 17.5		
6		12.5 15.9 20.0		
7		15.0 18.4 22.5		
8		17.5 20.9 25.0		
9		20.0 23.4 27.5		
10		22.5 25.9 30.0		
11		25.0 28.4 32.5		
12		27.5 30.9 35.0		
13		30.0 33.4 37.5		
14		32.5 35.9 40.0		
15		35.0 38.4 42.5		
16		37.5 40.9 45.0		

How to order



**GENERAL TOLERANCES**

0.X	±0.25	X.°	±3°
0.XX	±0.12		
0.XXX	±0.05	X.X°	±0.5°

序号	名称	材料	数量	附注
1	翻模	LCP (UL94V-0)	1	
2	翻模		n*1	
3	翻模		n*1	

ITEM	NAME OF PART	NO. OF PART	Q-TY	MATERIAL	NOTE
DWG	CHK	DATE	UNITS	SHEET/OF	1/1
APP	DATE	SCALE	1:1	A4	
NAME: MXXH-254-XXP-LT1					

MAIXU 慈溪市迈旭电子有限公司