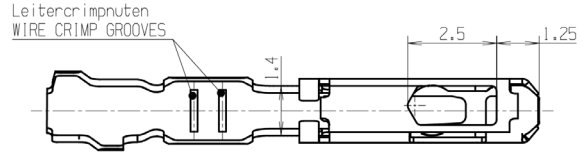
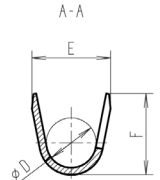
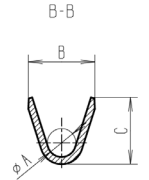
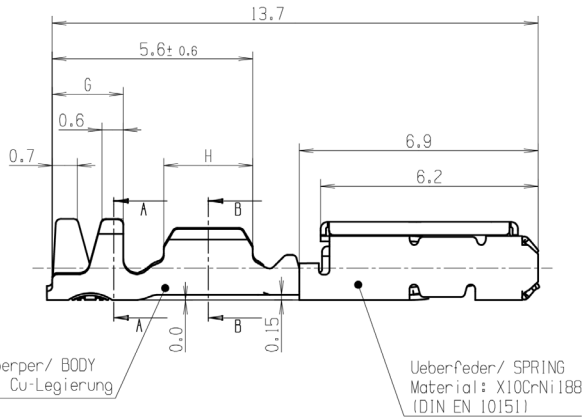
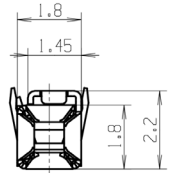
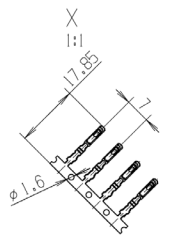
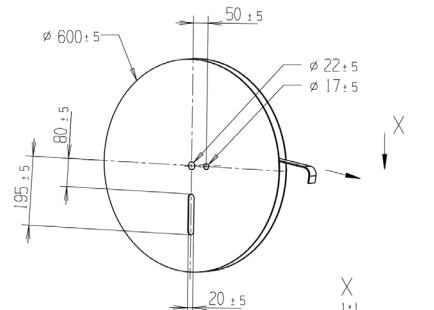


Bestell-/ORDER-NUMBER	Leiterquerschnitt /WIRE SIZE (mm ²)	Isolationsdurchmesser /DIAMETER OF INSULATION (mm)	Oberfläche /SURFACE	Bemerkungen /REMARKS
1 928 492 555	0.35 - 0.5	∅ 1.2 - ∅ 1.6	Kontaktzone verzinkt CONTACT AREA TIN-PLATED	
1 928 492 556	0.75	∅ 1.7 - ∅ 1.9	Kontaktzone verzinkt CONTACT AREA TIN-PLATED	
1 928 498 748	0.85	∅ 1.8 - ∅ 1.9	Kontaktzone verzinkt CONTACT AREA TIN-PLATED	
1 928 499 044	0.35 - 0.5	∅ 1.2 - ∅ 1.6	Kontaktzone versilbert CONTACT AREA SILVER-PLATED	
1 928 499 045	0.75	∅ 1.7 - ∅ 1.9	Kontaktzone versilbert CONTACT AREA SILVER-PLATED	

Anlieferungszustand
CONDITION AT TIME OF DELIVERY
1:10



Leiterquerschnitt / WIRE SIZE (mm ²)	A	B	C	D	E	F	G	H
0.35 - 0.5	0.8	1.8	1.9	1.4	2.3	2.3	2.0	2.5
0.75	1.0	2.0	2.1	1.6	2.7	2.9	1.8	2.8
0.85	1.0	2.0	2.4	1.6	2.7	2.9	1.8	2.8

Massgebend ist der deutsche Text!
GERMAN TEXT IS VALID!

9 general tolerances for Allgemeintoleranzen fuer lin. dim./L-masse radii/Radien | angles/Winkel

±0.5mm	±0.5mm	±10°
--------	--------	------

Lieferer / SUPPLIER BOSCH GS/ST02

Technische Kundenunterlagen / TECHNICAL CUSTOMER DOCUMENTATION : 1 928 A00 65T
 Werkzeuge fuer Verarbeitung / TOOLS FOR PROCESSING ACCORDING TO : 1 928 A00 70M
 nach Verarbeitungsvorschrift / PROCESSING SPECIFICATION

Kontakt muss nach Verarbeitungsvorschrift 1 928 A00 70M verarbeitet werden.
 CONTACT HAS TO BE PROCESSED ACCORDING TO PROCESSING SPECIFICATION 1 928 A00 70M.

Lang./Spr.	Ug	Wicht./Gew.	0,15 g	SOCKET CONTACT	BCB 0.6	Sheet/Bl.	1 / 1
ent/de	UG	Scale/Maßstab	10:1	BUCHSENKONTAKT	BCB 0.6	Formst.	001 09 A2
MNR		Doc. type	AGZ	1 928 A00 208		Repl. for	

OFFER DRAWING ANBOTSZEICHN.

© Robert Bosch GmbH. All rights reserved. All the registered trademarks and all the other rights in the event of applications for industrial property rights.