

ORDER-NUMBER Bestell-Nummer	WIRE CROSS SECTION Leiterquerschnitt [mm ²]	DIAMETER OF INSULATION Isolationsdurchmesser [mm]	COATING Oberfläche	L	ACCESSORY SINGLE-WIRE SEAL zugehörige Einzeldichtung			REMARKS Bemerkungen
					OFFER DRAWING Angebotszeichnung	ORDER-NO. Bestell-Nr.	COLOUR Farbe	
1 928 498 054	0.5 - 1.0	∅ 1.2 - ∅ 2.1	CONTACT AREA GOLD-PLATED Kontaktzone verguldet	0°	C 928 002 41A	1 928 300 599	BLUE blau	
1 928 498 055	1.5 - 2.5	∅ 2.2 - ∅ 3.0	CONTACT AREA GOLD-PLATED Kontaktzone verguldet	0°		1 928 300 600	WHITE Weiss	
⑨ 1 928 499 397	0.35	∅ 1.3 _{±0.1}	CONTACT AREA GOLD-PLATED Kontaktzone verguldet	0°		1 928 300 599	BLUE blau	
1 928 498 056	0.5 - 1.0	∅ 1.2 - ∅ 2.1	CONTACT AREA TIN-PLATED Kontaktzone verzinkt	0°		1 928 300 599	BLUE blau	
1 928 498 057	1.5 - 2.5	∅ 2.2 - ∅ 3.0	CONTACT AREA TIN-PLATED Kontaktzone verzinkt	0°		1 928 300 600	WHITE Weiss	
⑨ 1 928 499 396	0.35	∅ 1.3 _{±0.1}	CONTACT AREA TIN-PLATED Kontaktzone verzinkt	0°		1 928 300 599	BLUE blau	
1 928 498 058	0.5 - 1.0	∅ 1.2 - ∅ 2.1	CONTACT AREA SILVER-PLATED Kontaktzone versilbert	90°		1 928 300 599	BLUE blau	
1 928 498 059	1.5 - 2.5	∅ 2.2 - ∅ 3.0	CONTACT AREA SILVER-PLATED Kontaktzone versilbert	90°		1 928 300 600	WHITE Weiss	
⑨ 1 928 499 395	0.35	∅ 1.3 _{±0.1}	CONTACT AREA SILVER-PLATED Kontaktzone versilbert	90°		1 928 300 599	BLUE blau	

WIRE CROSS SECTION Leiterquerschnitt [mm ²]	A	B	C	D	E	F	G	H	J	K	NUMBER OF WIRE CRIMP GROOVES Zahl der Leitercrimpnuten
0.5 - 1.0	2.5	2.7	1.2	4.8	4.8	3.3	3.0	1.6	7.0	0.8	2
1.5 - 2.5	3.6	3.8	1.7	5	5	3.5	3.5	1.6	7.5	0.8	3
⑨ 0.35	2.1	2.1	0.8	4.5	4.5	3.2	2.5	1.6	6.5	0.75	3

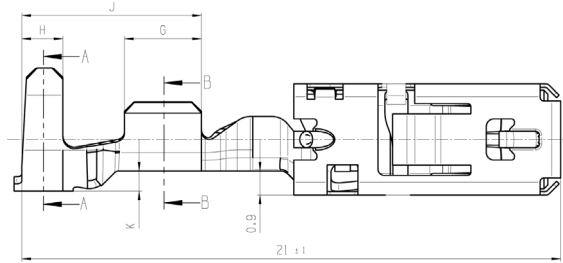
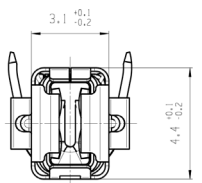
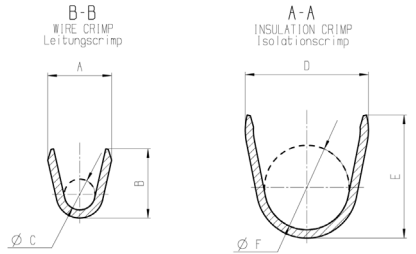
SUPPLIER : BOSCH GS-AM/SCO
Lieferer : BOSCH GS-AM/SCO

TECHNICAL CUSTOMER DOCUMENTATION : 1 928 A00 23T
Technische Kundenunterlagen : 1 928 A00 23T

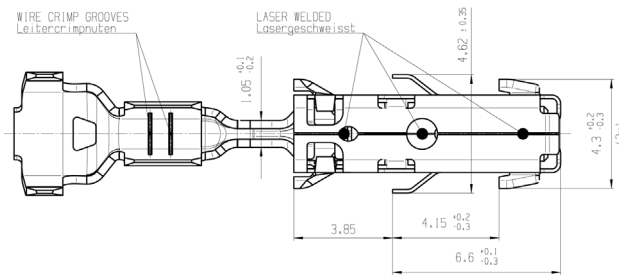
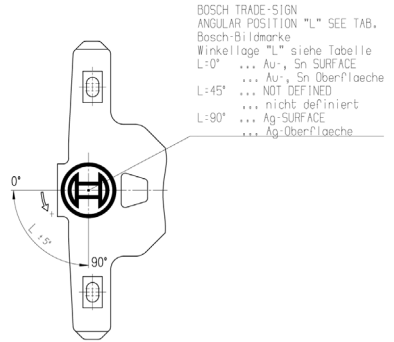
TOOLS FOR PROCESSING ACC. TO PROCESSING SPECIFICATION : 1 928 F00 025
Werkzeuge fuer Verarbeitung nach Verarbeitungsvorschrift : 1 928 F00 025

CONTACT HAS TO BE PROCESSED ACC. TO PROCESSING SPECIFICATION 1 928 F00 025.
Kontakt muss nach Verarbeitungsvorschrift 1 928 F00 025 verarbeitet werden.

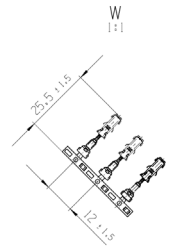
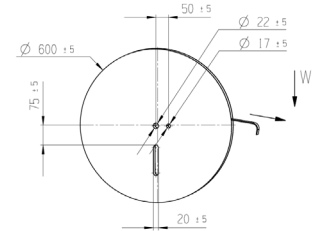
⑨ SHOWN VERSION: 1 928 498 054
Dargestellte Variante: 1 928 498 054



X DEVELOPED VIEW OF CONTACT BODY
Abwicklung Kontaktkoerper



CONDITION AT TIME OF DELIVERY
Anlieferungszustand
1:10



General tolerances for all geometrical features (in mm, unless noted otherwise)	mm
ISO 14405-1:2010-12	IT 12

GERMAN TEXT IS VALID!
Mussgebend ist der deutsche Text!

Doc. No.	Rev.	Issued Date	By	Checked	Released	Released Date	Released By	Released For	Released To
09	Modif	20140822	Co	hnu2ei	-	213005-AM/EN	-	MITIGATION AX	
06	Modif	20040607	Co	phe2ei	-	213005-AM/EN	-		
07	Modif	20030922	Co	phe2ei	-	213005-AM/EN	-		
01	TRK CORRECT	20010308	Co	jm	-	213005-AM/EN	-	05/21/14	

Scale/Vergr. 10:1

BOSCH CONTACT
AGZ 1 928 A00 076

Sheet/Bl. 1 / 1

Scale/Vergr. 10:1

Scale/Vergr. 10:1