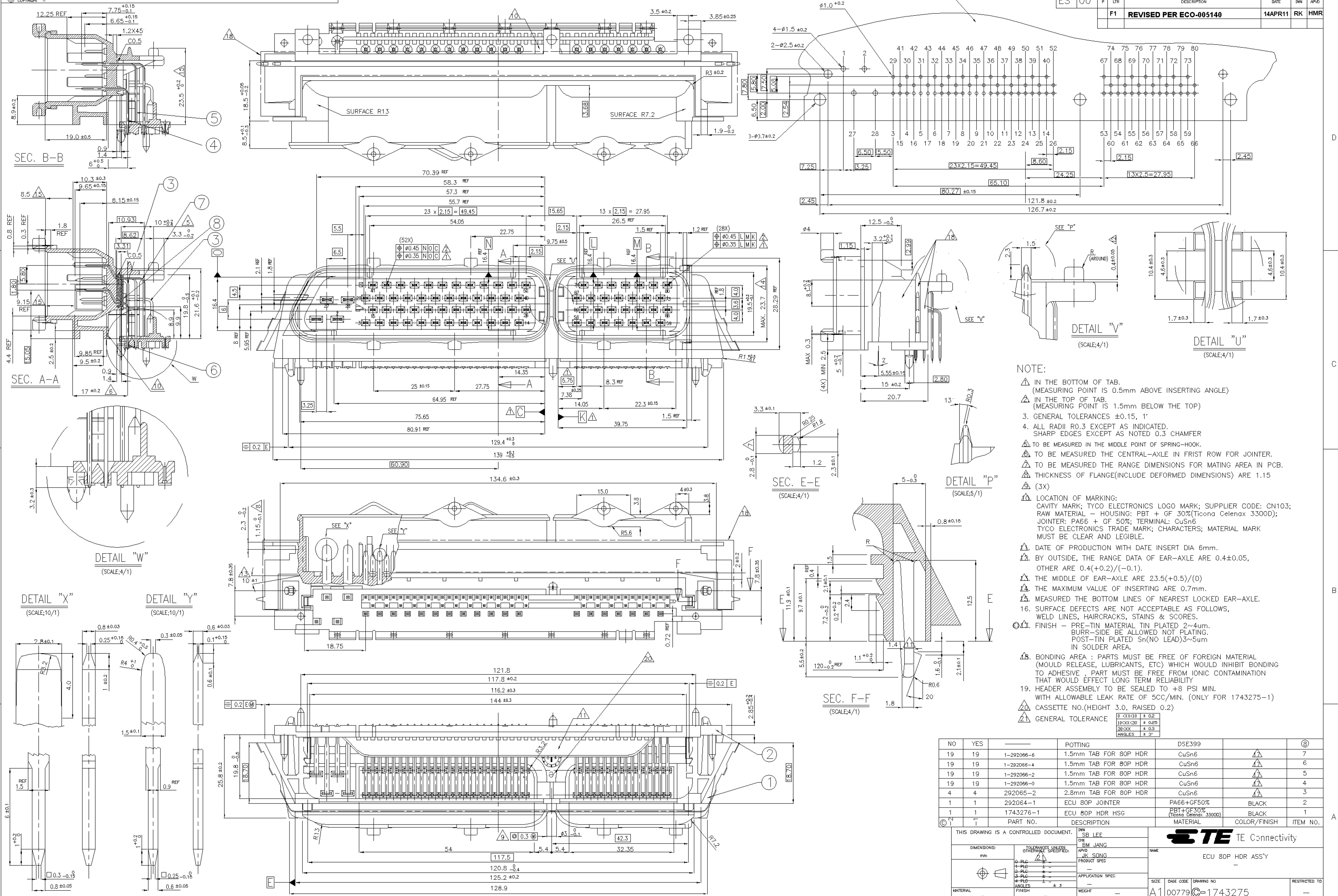


| REV | DATE    | BY | APPD | DESCRIPTION            |
|-----|---------|----|------|------------------------|
| F1  | 14APR11 | RK | HMR  | REVISED PER ECO-005140 |



- NOTE:**
- ▲ IN THE BOTTOM OF TAB.  
(MEASURING POINT IS 0.5mm ABOVE INSERTING ANGLE)
  - ▲ IN THE TOP OF TAB.  
(MEASURING POINT IS 1.5mm BELOW THE TOP)
  - 3. GENERAL TOLERANCES ±0.15, 1'
  - 4. ALL RADII R0.3 EXCEPT AS INDICATED.  
SHARP EDGES EXCEPT AS NOTED 0.3 CHAMFER
  - ▲ TO BE MEASURED IN THE MIDDLE POINT OF SPRING-HOOK.
  - ▲ TO BE MEASURED THE CENTRAL-AXLE IN FRIST ROW FOR JOINTER.
  - ▲ TO BE MEASURED THE RANGE DIMENSIONS FOR MATING AREA IN PCB.
  - ▲ THICKNESS OF FLANGE(INCLUDE DEFORMED DIMENSIONS) ARE 1.15
  - ▲ (3X)
  - ▲ LOCATION OF MARKING:  
CAVITY MARK; TYCO ELECTRONICS LOGO MARK; SUPPLIER CODE: CN103;  
RAW MATERIAL - HOUSING: PBT + GF 30%(Ticona Celenax 3300D);  
JOINTER: PA66 + GF 50%; TERMINAL: CuSn6  
TYCO ELECTRONICS TRADE MARK; CHARACTERS; MATERIAL MARK  
MUST BE CLEAR AND LEGIBLE.
  - ▲ DATE OF PRODUCTION WITH DATE INSERT DIA 6mm.
  - ▲ BY OUTSIDE, THE RANGE DATA OF EAR-AXLE ARE 0.4±0.05,  
OTHER ARE 0.4(+0.2)/(-0.1).
  - ▲ THE MIDDLE OF EAR-AXLE ARE 23.5(+0.5)/(-0)
  - ▲ THE MAXIMUM VALUE OF INSERTING ARE 0.7mm.
  - ▲ MEASURED THE BOTTOM LINES OF NEAREST LOCKED EAR-AXLE.
  - 16. SURFACE DEFECTS ARE NOT ACCEPTABLE AS FOLLOWS,  
WELD LINES, HAIRCRACKS, STAINS & SCORES.
  - ▲ FINISH - PRE-TIN MATERIAL TIN PLATED 2~4um.  
BURR-SIDE BE ALLOWED NOT PLATING.  
POST-TIN PLATED Sn(NO LEAD)3~5um  
IN SOLDER AREA.
  - ▲ BONDING AREA : PARTS MUST BE FREE OF FOREIGN MATERIAL  
(MOULD RELEASE, LUBRICANTS, ETC) WHICH WOULD INHIBIT BONDING  
TO ADHESIVE , PART MUST BE FREE FROM IONIC CONTAMINATION  
THAT WOULD EFFECT LONG TERM RELIABILITY
  - 19. HEADER ASSEMBLY TO BE SEALED TO +8 PSI MIN.  
WITH ALLOWABLE LEAK RATE OF 5CC/MIN. (ONLY FOR 1743275-1)
  - ▲ CASSETTE NO.(HEIGHT 3.0, RAISED 0.2)
  - ▲ GENERAL TOLERANCE

| NO  | YES |            | POTTING               | DSE399                              |              | ⑧        |
|-----|-----|------------|-----------------------|-------------------------------------|--------------|----------|
| 19  | 19  | 1-292066-6 | 1.5mm TAB FOR 80P HDR | CuSn6                               | ▲            | 7        |
| 19  | 19  | 1-292066-4 | 1.5mm TAB FOR 80P HDR | CuSn6                               | ▲            | 6        |
| 19  | 19  | 1-292066-2 | 1.5mm TAB FOR 80P HDR | CuSn6                               | ▲            | 5        |
| 19  | 19  | 1-292066-0 | 1.5mm TAB FOR 80P HDR | CuSn6                               | ▲            | 4        |
| 4   | 4   | 292065-2   | 2.8mm TAB FOR 80P HDR | CuSn6                               | ▲            | 3        |
| 1   | 1   | 292064-1   | ECU 80P JOINTER       | PA66+GF50%                          | BLACK        | 2        |
| 1   | 1   | 1743276-1  | ECU 80P HDR HSG       | PBT+GF30%<br>(Ticona Celenax 3300D) | BLACK        | 1        |
| REV | T   |            | DESCRIPTION           | MATERIAL                            | COLOR/FINISH | ITEM NO. |

THIS DRAWING IS A CONTROLLED DOCUMENT.

**TE Connectivity**

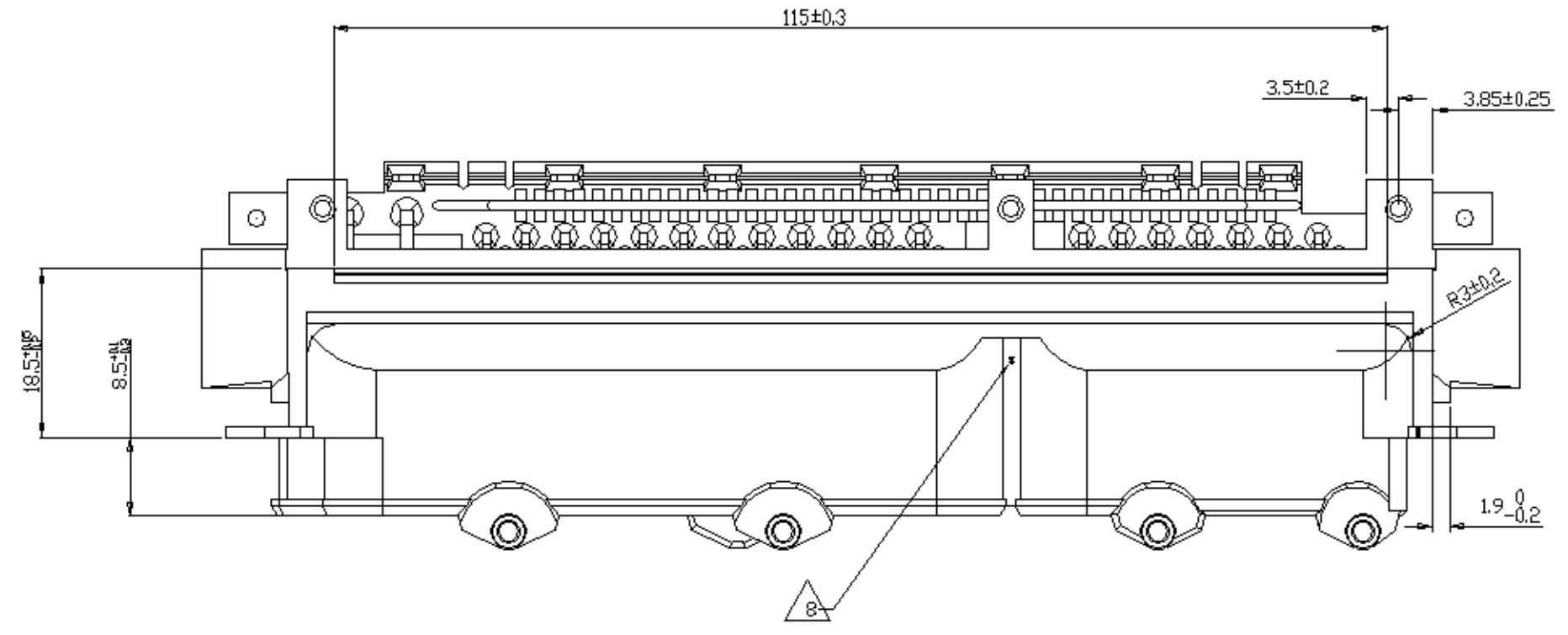
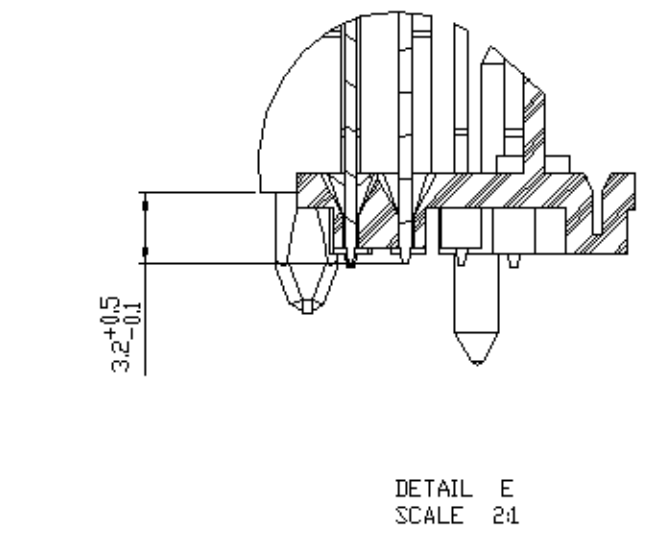
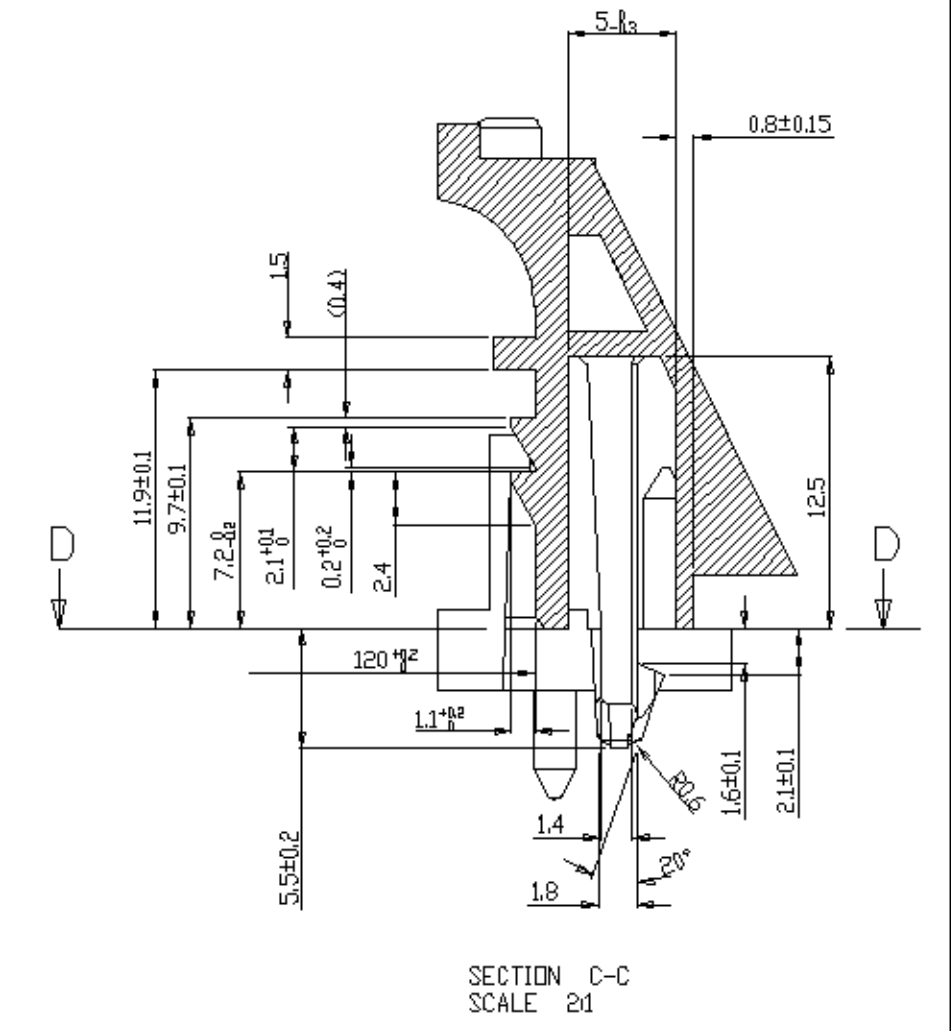
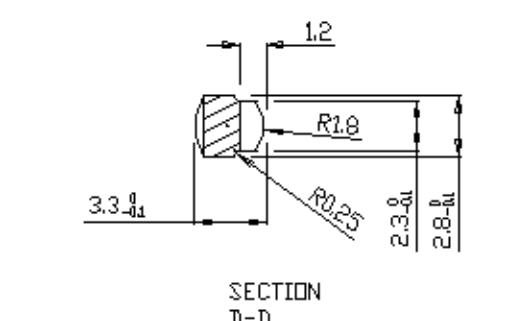
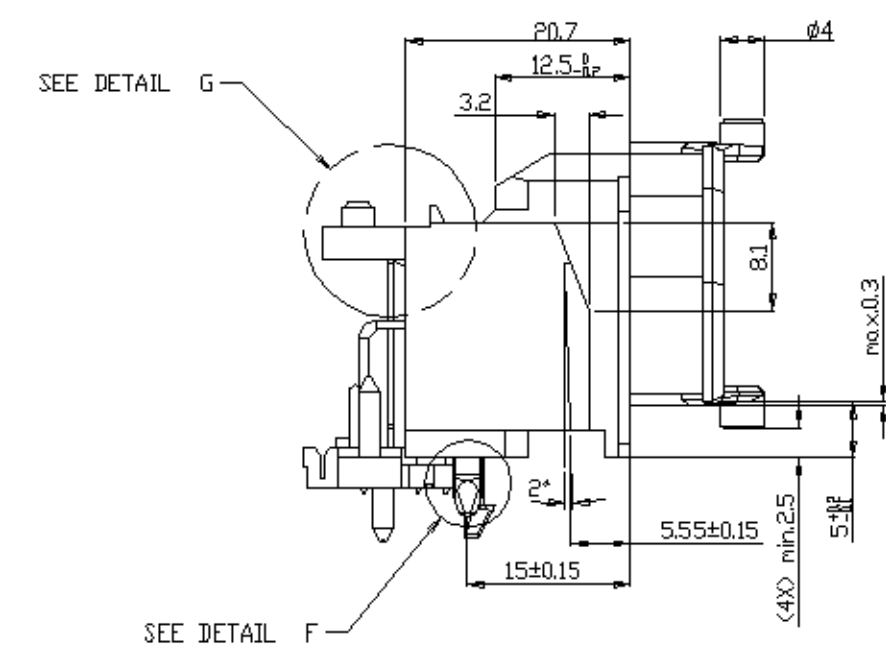
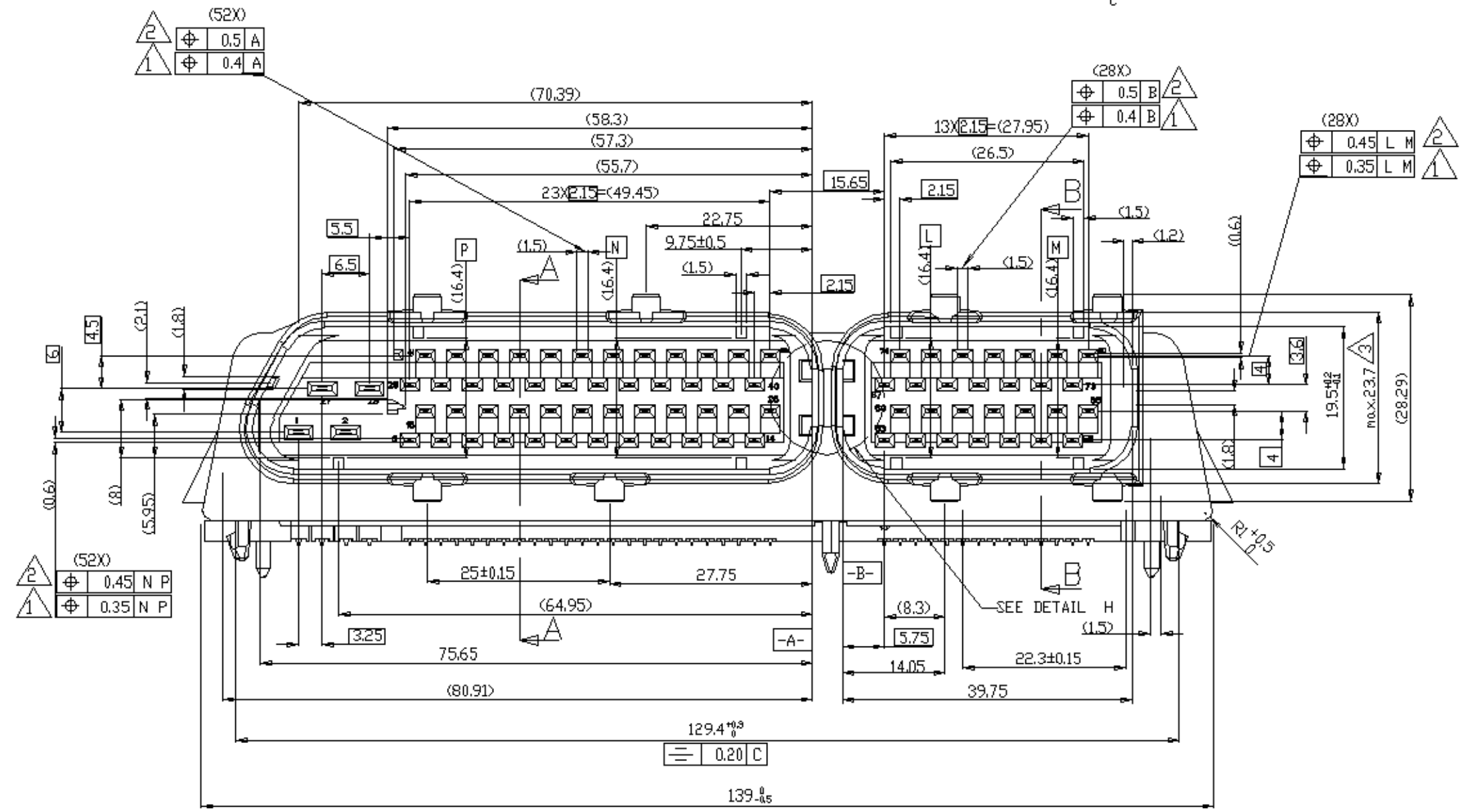
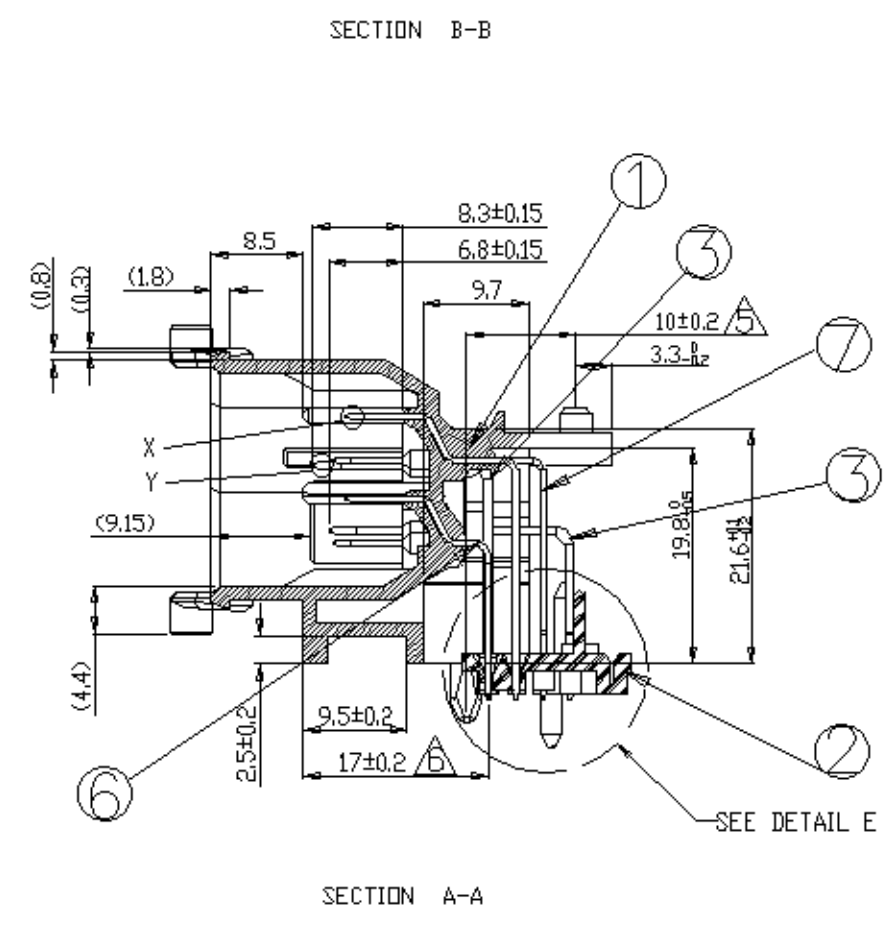
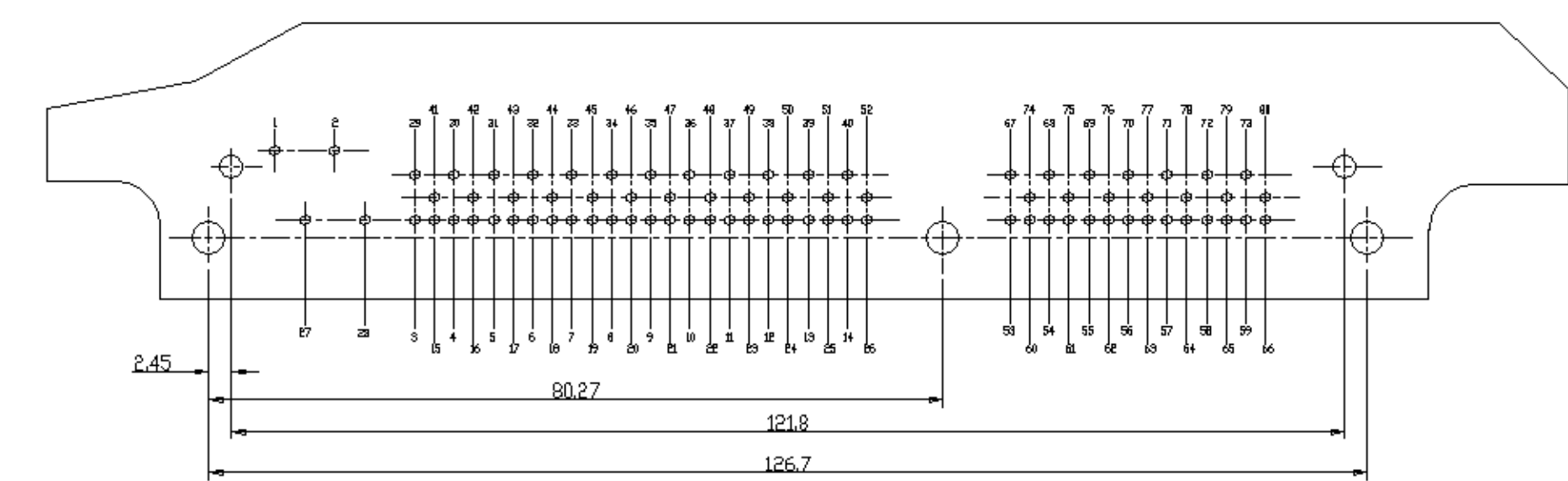
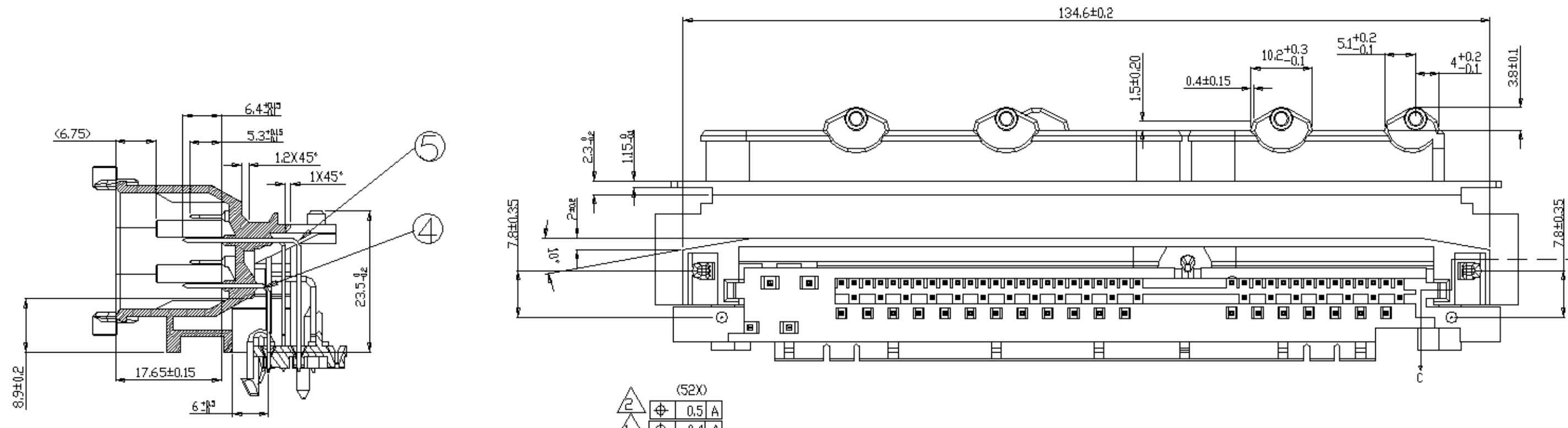
ECU 80P HDR ASSY

DATE CODE: A1  
 DRAWING NO: 00779  
 SHEET: 1 of 2

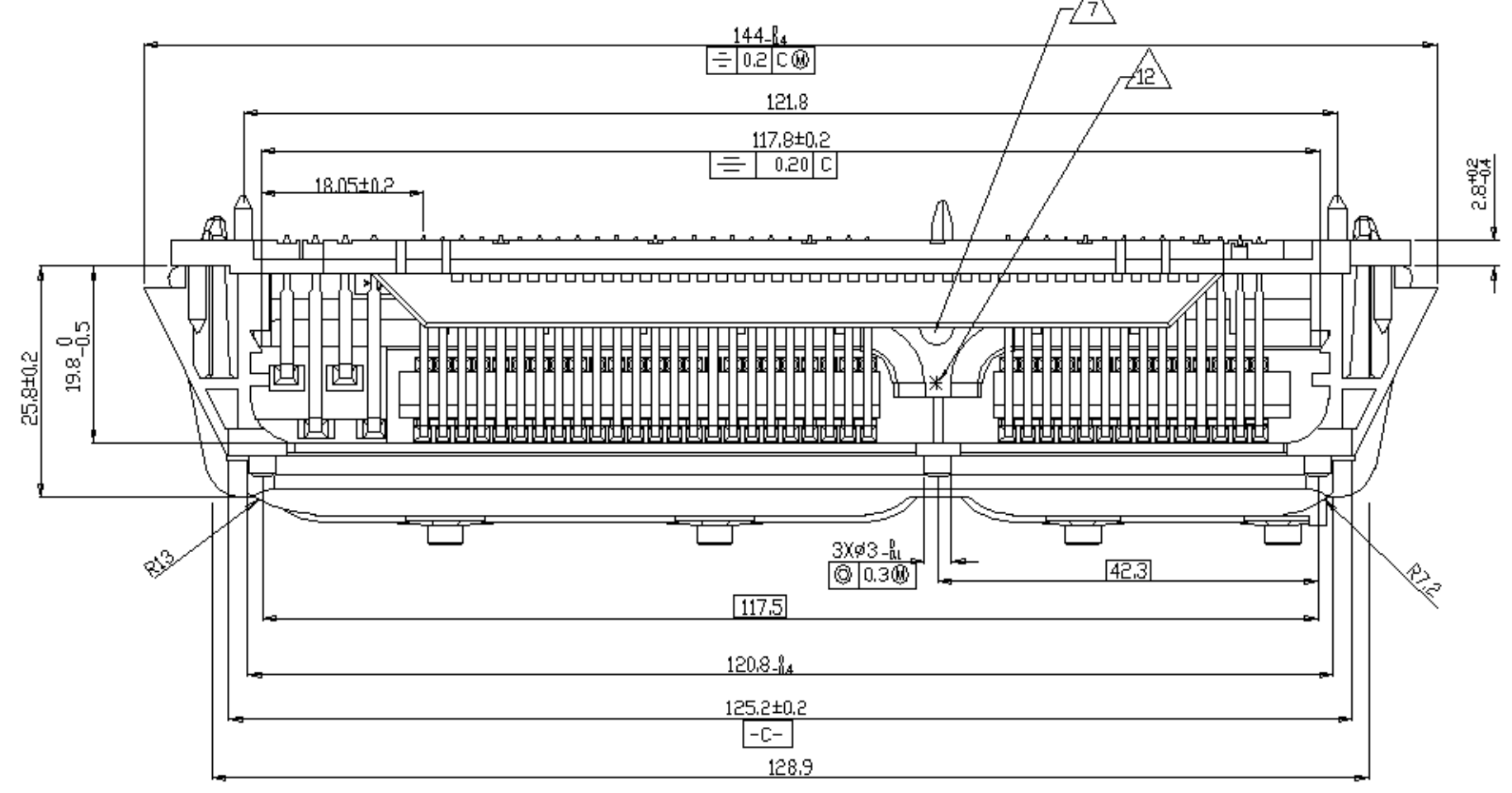
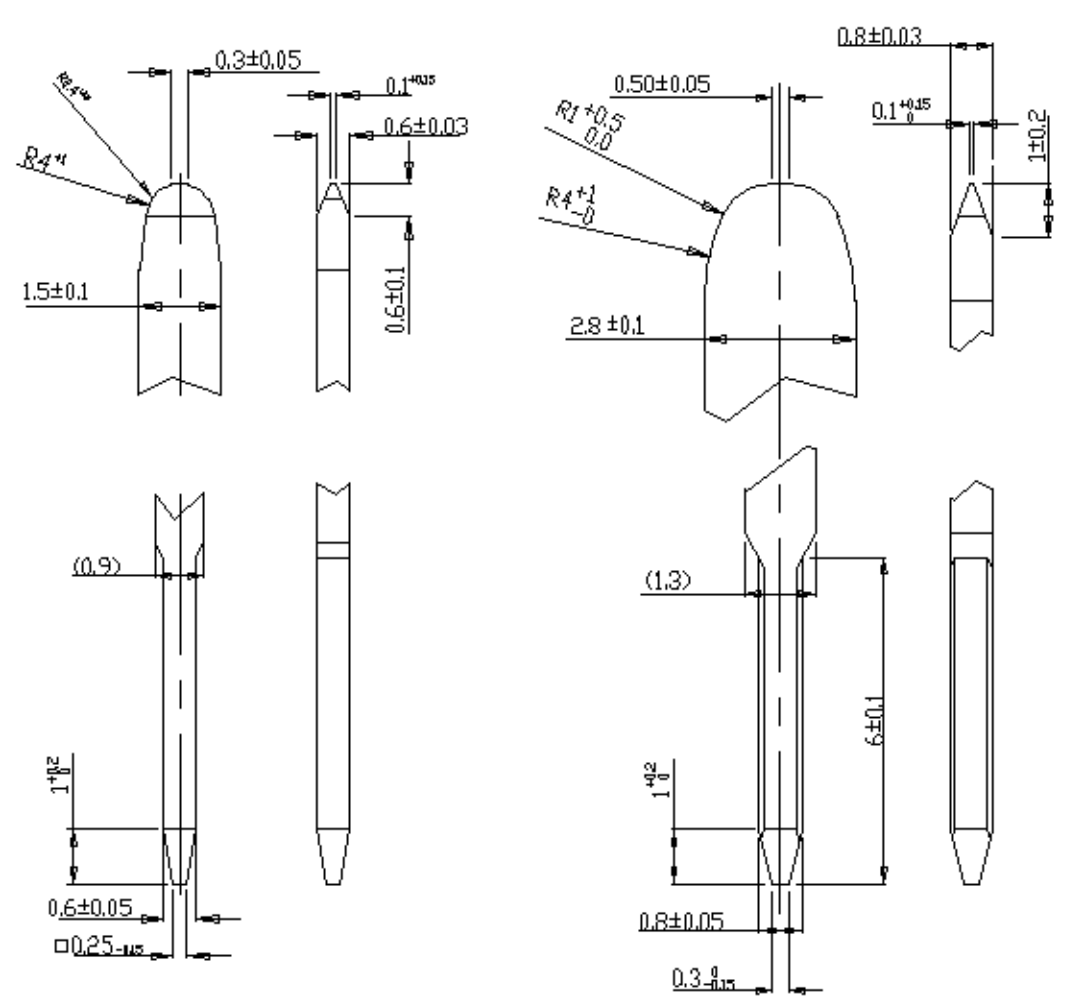
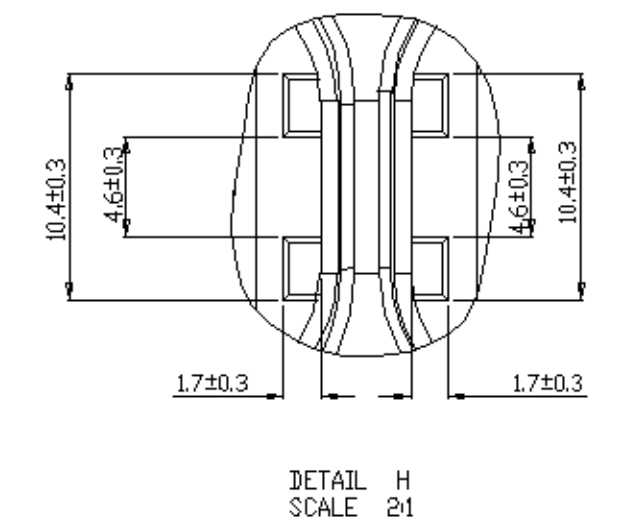
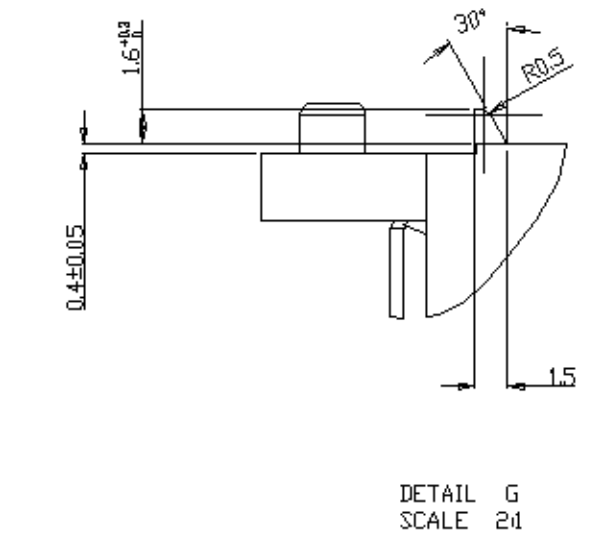
SCALE: 2:1

THIS DRAWING IS UNPUBLISHED. RELEASED FOR PUBLICATION  
 © COPYRIGHT ALL RIGHTS RESERVED.

| LOC |    | DIST |     | REVISIONS     |      |     |      |  |
|-----|----|------|-----|---------------|------|-----|------|--|
| ES  | 00 | P    | LTR | DESCRIPTION   | DATE | DWN | APVD |  |
|     |    |      |     | SEE SHEET 1/2 |      |     |      |  |



- NOTES:
- IN THE BOTTOM OF TAB (MEASURING POINT IS 0.5mm ABOVE INSERTING ANGLE)
  - IN THE TOP OF TAB (MEASURING POINT IS 1.5mm BELOW THE TOP)
  - THE WARPAGE AND HOLLOW 0.7MAX.
  - ALL RADII R0.3 EXCEPT AS INDICATED SHARP EDGES EXCEPT AS NOTED 0.3 CHAMFER
  - TO BE MEASURED THE MIDDLE POINT OF SPRING-HOOK.
  - TO BE MEASURED THE CENTRAL-AXLE IN FIRST ROW FOR JOINTER.
  - DATE COAD.
  - CAVITY MARKS: 1,2,3,4
  - MATERIAL - HOUSING: PA66 GF30% BLACK  
- JOINTER: PA66 GF50% BLACK  
- TERMINAL: CuSn6
  - FINISH PRE-TIN MATERIAL TIN PLATED 2~4um PLATED 3~5um Sn(NO LEAD) IN SOLDER AREA.
  - ELECTROSTATIC DISCHARGE BETWEEN THE PINS MUST BE 1000V DC MIN. OVER 1 SEC.
  - CASSETTE NO. HEIGHT 3.0, RAISED 0.2)
  - GENERAL TOLERANCE



| QTY | PART NO.   | DESCRIPTION           | MATERIAL   | COLOR/FINISH | ITEM NO. |
|-----|------------|-----------------------|------------|--------------|----------|
| 19  | 1-292066-6 | 1.5mm TAB FOR 80P HDR | CuSn6      |              | ⑦        |
| 19  | 1-292066-4 | 1.5mm TAB FOR 80P HDR | CuSn6      |              | ⑥        |
| 19  | 1-292066-2 | 1.5mm TAB FOR 80P HDR | CuSn6      |              | ⑤        |
| 19  | 1-292066-0 | 1.5mm TAB FOR 80P HDR | CuSn6      |              | ④        |
| 4   | 292065-4   | 2.8mm TAB FOR 80P HDR | CuSn6      |              | ③        |
| 1   | 292064-1   | ECU 80P JOINTER       | PA66+GF50% | BLACK        | ②        |
| 1   | 1743276-2  | ECU 80P HDR HSG       | PA66+GF30% | BLACK        | ①        |

|                       |  |                                       |  |                 |  |                   |  |                       |  |
|-----------------------|--|---------------------------------------|--|-----------------|--|-------------------|--|-----------------------|--|
| PART NO. 1743275-3    |  | DESCRIPTION                           |  | MATERIAL        |  | COLOR/FINISH      |  | ITEM NO.              |  |
| DWN EVAN, J 27JUN2007 |  | NAME                                  |  | TE Connectivity |  | ECU 80P HDR ASS'Y |  |                       |  |
| CHK IVAN, Y 27JUN2007 |  | APVD K. ODA 27JUN2007                 |  | PRODUCT SPEC    |  | APPLICATION SPEC  |  | WEIGHT                |  |
| DIMENSIONS: MM        |  | TOLERANCES UNLESS OTHERWISE SPECIFIED |  | SIZE A1         |  | CAGE CODE 00779   |  | DRAWING NO. C=1743275 |  |
| MATERIAL 9            |  | FINISH 10                             |  | SCALE 2:1       |  | SHEET 2 OF 2      |  | REV F1                |  |