

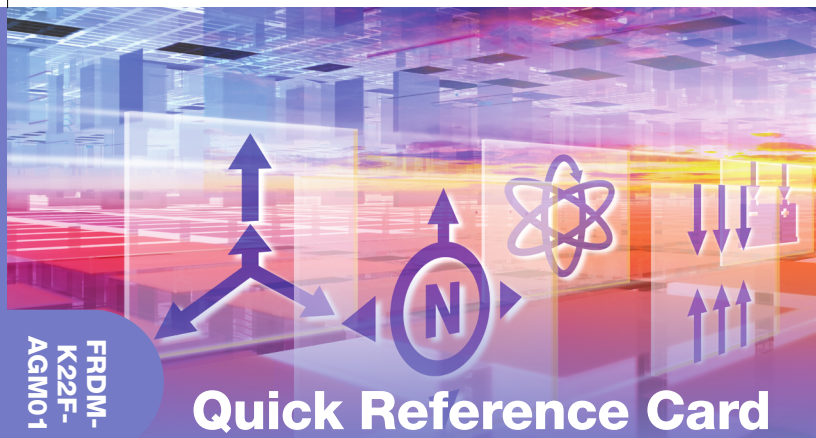
Freescale and the Freescale logo are trademarks of Freescale Semiconductor, Inc., Reg. U.S. Pat. & Tm. Off. All other product or service names are the property of their respective owners. © 2015 Freescale Semiconductor, Inc. FRDMK22FAGM01QRC REV0 920-76667 REV A



For more information, visit freescale.com/sensortoolbox

FRDM-K22F-AGM01

FRDM-K22F-AGM01



FRDM-K22F-AGM01

Quick Reference Card

9-axis Sensor Toolbox Development Board

Enabled for sensor fusion with FXAS21002C 3-axis gyroscope, FXOS8700C 6-axis integrated e-compass, and Freescale Freedom FRDM-K22F development board



Get Started

Download tools and documentation under **Jump-Start Your Design** at freescale.com/sensortoolbox



FREESCALE FREEDOM PLATFORM

- 1 Verify package contents:
 - FRDM-K22F/FRDM-STBC-AGM01 assembly
 - USB cable
- 2 Download the mbed Windows serial port driver: developer.mbed.org/handbook/Windows-serial-configuration
- 3 Plug one end of a USB cable into the SDA port on the assembly. Plug the other end of the cable into the USB port on the computer.
- 4 Download and install the latest Sensor Toolbox software at: freescale.com/sensortoolbox
- 5 Start the Sensor Toolbox software.

For more information, go to: freescale.com/sensortoolbox

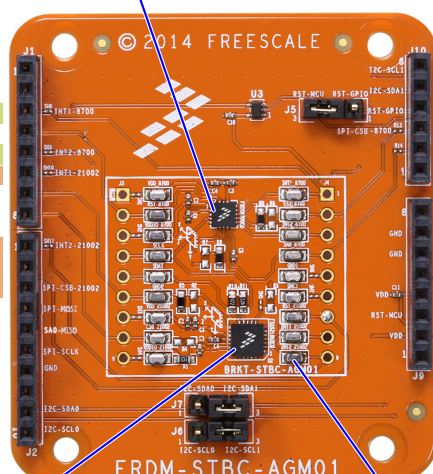
FXOS8700C 6-axis sensor with integrated linear accelerometer and magnetometer
16 QFN (3 mm x 3 mm x 1.2 mm)

INT1-8700 - 3
INT2-8700 - 5
INT1-21002 - 6

INT2-21002 - 1
SPI-CSB-21002 - 3
SPI-MOSI - 4
SA0-MISO - 5
SPI-SCLK - 6
GND - 7

I2C_SDA0 - 9
I2C_SCL0 - 10

FXAS21002C 3-axis digital angular rate gyroscope
24 QFN (4 mm x 4 mm x 1 mm)



Test points (18 places)

6 - I2C-SCL1
5 - I2C-SDA1
4 - RST-GPIO
3 - SPI-CSB-8700

7 - GND
6 - GND

4 - VDD
3 - RST-MCU
2 - VDD

Get to Know the FRDM-K22F-AGM01



Learn more at freescale.com/sensortoolbox

Mouser Electronics

Authorized Distributor

Click to View Pricing, Inventory, Delivery & Lifecycle Information:

[NXP:](#)

[FRDM-K22F-AGM01](#)