

Features

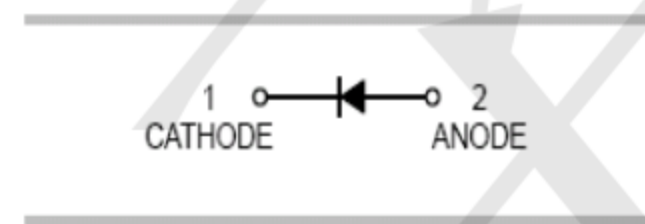
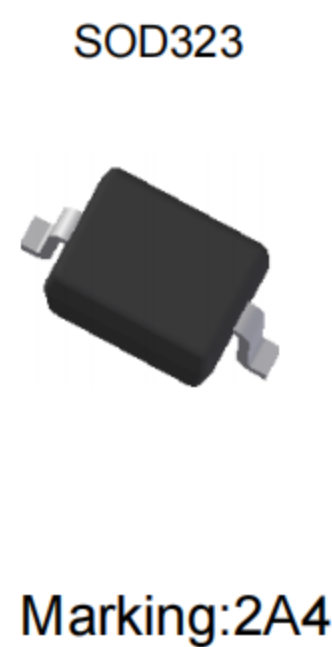
- General rectification
- Low V_F ; Low I_R
- High reliability

Applications

- surface mount schottky barrier rectifier

Ordering Information

- Shipping Qty:3000/7inch Tape& Reel



Absolute Maximum Ratings ($T_A=25^\circ\text{C}$ unless otherwise noted)

Parameter	Symbol	Value	Unit
DC Reverse Voltage	V_R	40	V
Maximum Average Forward Output Current	$I_{F(AV)}$	2	A
Peak Forward Surge Current (8.3ms single half sine-wave)	I_{FSM}	20	A

Thermal Characteristics ($T_A=25^\circ\text{C}$ unless otherwise noted)

Parameter	Symbol	Value	Unit
Power Dissipation	P_D	250	mW
Operating Junction Temperature	T_J	-55 ~ +125	$^\circ\text{C}$
Storage Temperature Range	T_{STG}	-55 ~ +150	$^\circ\text{C}$

Electrical Characteristics ($T_A=25^\circ\text{C}$ unless otherwise noted)

Parameter	Symbol	Test Condition	Min.	Typ.	Max.	Unit
Reverse Breakdown Voltage	$V_{(BR)R}$	$I_R = 100\mu\text{A}$	40	-	-	V
Forward Voltage	V_F	$I_F = 1\text{A}$	-	-	0.55	V
		$I_F = 2\text{A}$	-	-	0.65	V
Maximum Peak Reverse Current	I_R	$V_R = 40\text{V}$	-	-	50	μA

Typical Electrical Characteristic Curves

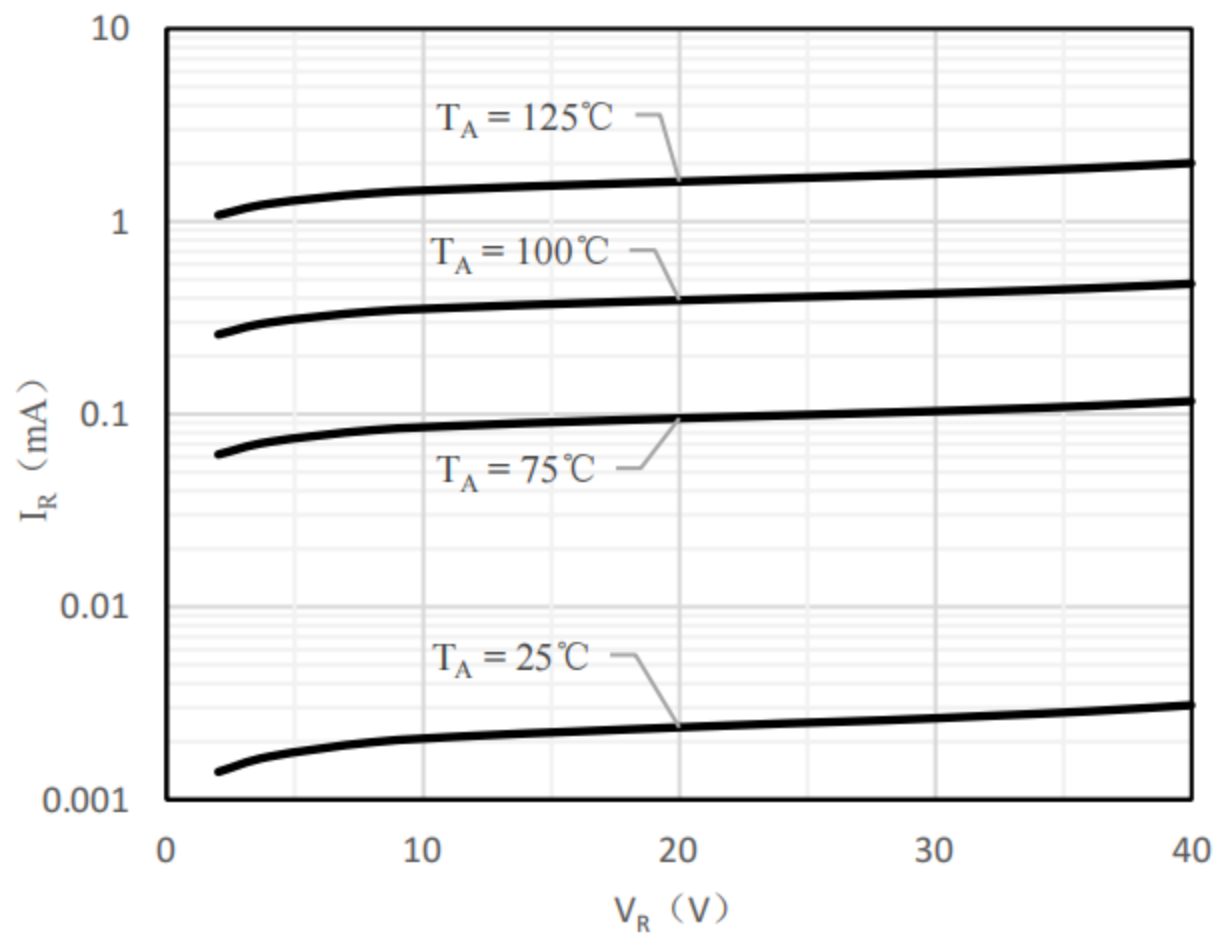


Fig 1 Typical Reverse Characteristic

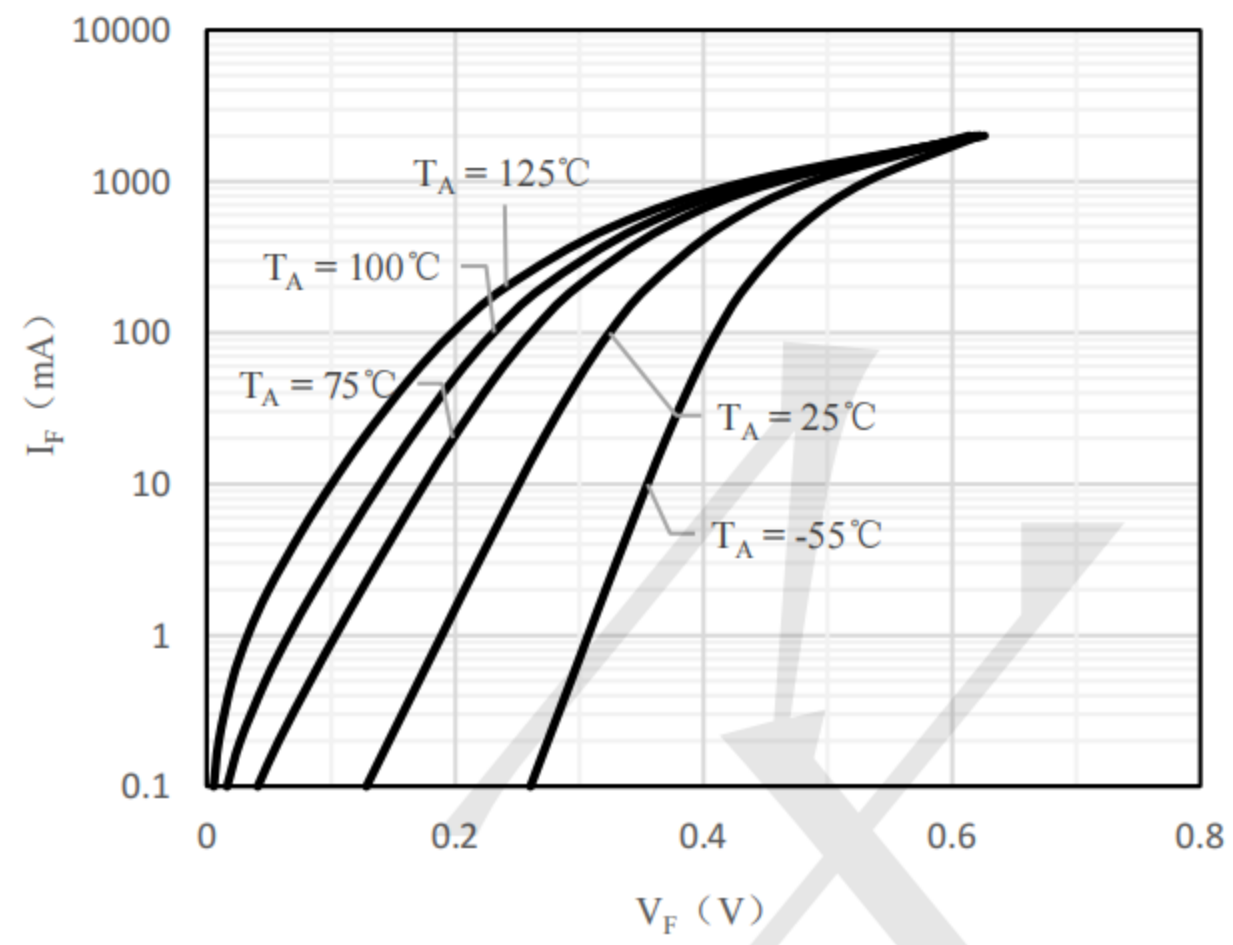
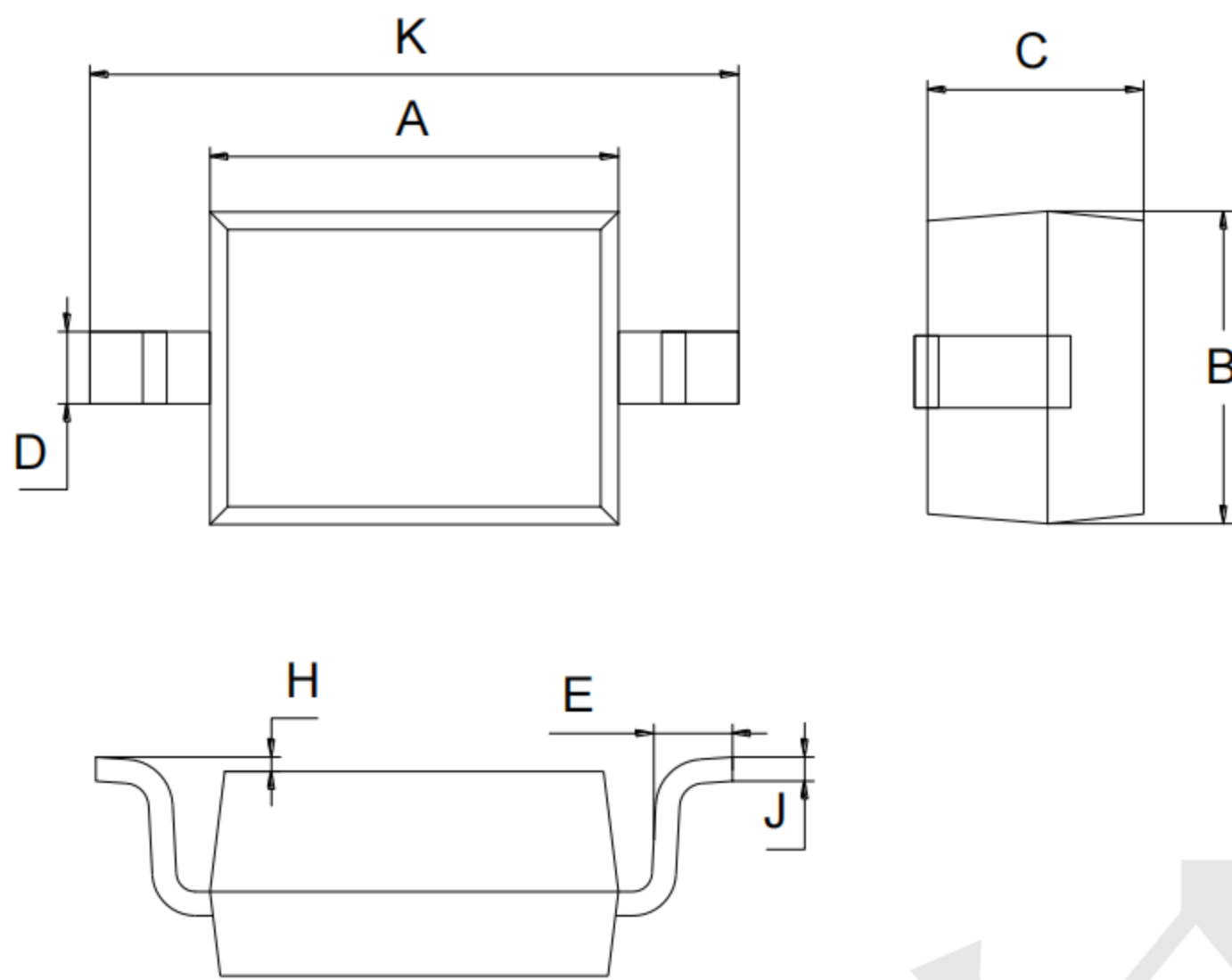


Fig 2 Typical Forward Characteristics

Outline Drawing - SOD323



SOD-323		
Dim	Min	Max
A	1.60	1.80
B	1.20	1.40
C	0.80	0.90
D	0.25	0.35
E	0.22	0.42
H	0.02	0.10
J	0.05	0.15
K	2.55	2.75

Mounting Pad Layout-SOD323 (unit: mm)

