



MUR2005 THRU MUR2060

VOLTAGE RANGE	100 to 600 Volts
CURRENT	20.0 Ampere

Features

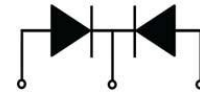
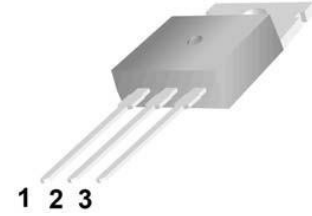
- Low power loss, high efficiency, High surge capacity
- For use in low voltage, high frequency inverters
- Metal silicon junction, majority carrier conduction
- High current Capability, low forward voltage drop
- Guard ring for over voltage protection

TO-220AB



Mechanical Data

- Case: TO-220AB molded plastic over glass passivated chip
- Case: Copper base plate & Plastic Shell
- Molding compound meets UL 94 V-0 flammability rating, Halogen-free, RoHS-compliant, and commercial grade
- Weight: 0.08ounce, 2.24 gram



1. Anode 2. Cathode 3. Anode

Maximum Ratings and Electrical Characteristics

- Ratings at 25°C ambient temperature unless otherwise specified
- Single Phase, half wave, 60Hz, resistive or inductive load
- For capacitive load derate current by 20%

TYPE NUMBER	SYMBOLS	MUR 2005	MUR 2010	MUR 2020	MUR 2030	MUR 2040	MUR 2060	UNIT
Maximum Repetitive Peak Reverse Voltage	V_{RRM}	100	150	200	300	400	600	Volts
Maximum RMS Voltage	V_{RMS}	70	105	140	210	280	420	Volts
Maximum DC Blocking Voltage	V_{DC}	100	100	200	300	400	600	Volts
Maximum Average Forward Rectified Current 0.375"(9.5mm) lead length at $T_A=100^\circ\text{C}$	$I_{(AV)}$	10						Amps
Peak Forward Surge Current 8.3mS single half sine wave superimposed on rated load (JEDEC method)	I_{FSM}	250						Amps
Maximum Instantaneous Forward Voltage at 10A ^(NOTE 3)	V_F	0.95			1.25		1.70	Volts
Maximum DC Reverse Current at rated DC blocking Voltage at	I_R	$T_A = 25^\circ\text{C}$						μA
		$T_A = 100^\circ\text{C}$						
Maximum Reverse Recovery Time ^(NOTE 1)	T_{RR}	35			50			nS
Typical Junction Capacitance ^(NOTE 2)	C_J	62						pF
Typical Thermal Resistance ^(NOTE 4)	$R_{\theta JA}$	1.4						$^\circ\text{C}/\text{W}$
Operating Junction Temperature Range	T_J	(-55 to +150)						$^\circ\text{C}$
Storage Temperature Range	T_{STG}	(-55 to +150)						$^\circ\text{C}$

Notes:

1. Reverse Recovery Test Conditions: $I_f=0.5\text{A}$, $I_r=1.0\text{A}$, $I_{rr}=0.25\text{A}$.
2. Measured at 1.0MHz and applied reverse voltage of 4.0 Volts.
3. Pulse test: 300 μs pulse width, 1% duty cycle
4. Unit mounted on P.C.B. with 0.033"×0.043"(1.00mm×1.30mm) copper pads.



VOLTAGE RANGE	100 to 600 Volts
CURRENT	20.0 Ampere

MUR2005 THRU MUR2060

Ratings and Characteristic Curves ($T_A=25^{\circ}\text{C}$ unless otherwise noted)

FIG.1-TYPICAL FORWARD CURRENT DERATING CURVE

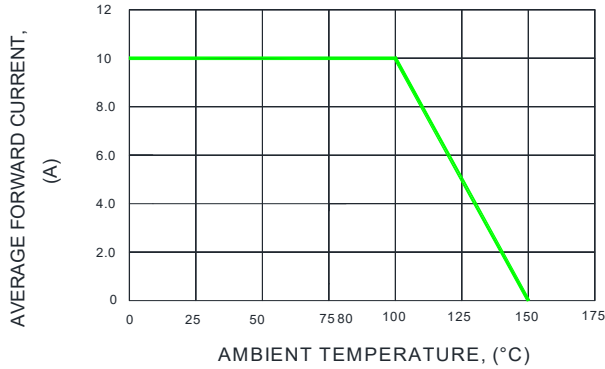


FIG.2-MAXIMUM NON-REPETITIVE PEAK FORWARD SURGE CURRENT

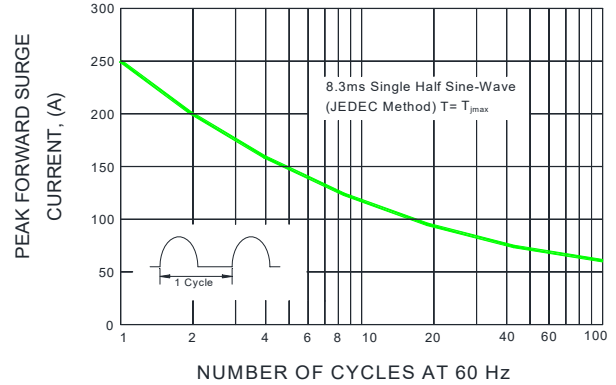


FIG.3-TYPICAL INSTANTANEOUS FORWARD CHARACTERISTICS

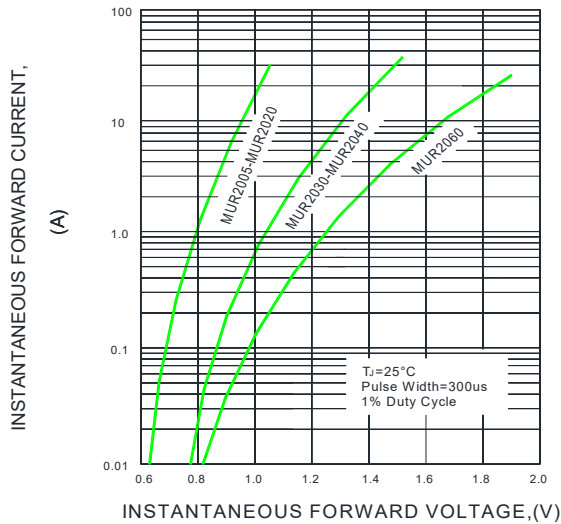


FIG.4-TYPICAL REVERSE CHARACTERISTICS

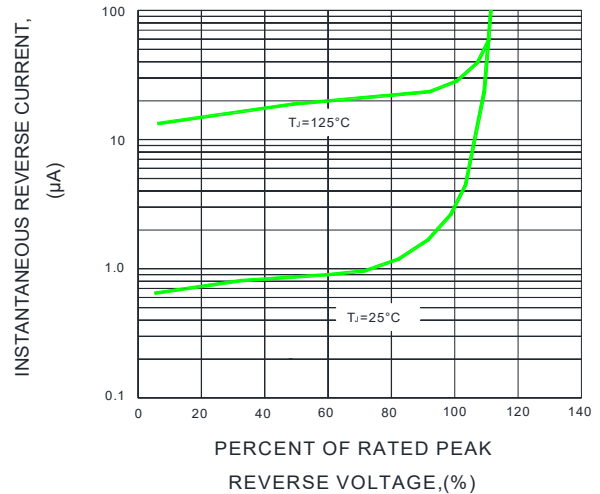


FIG.5-TYPICAL JUNCTION CAPACITANCE

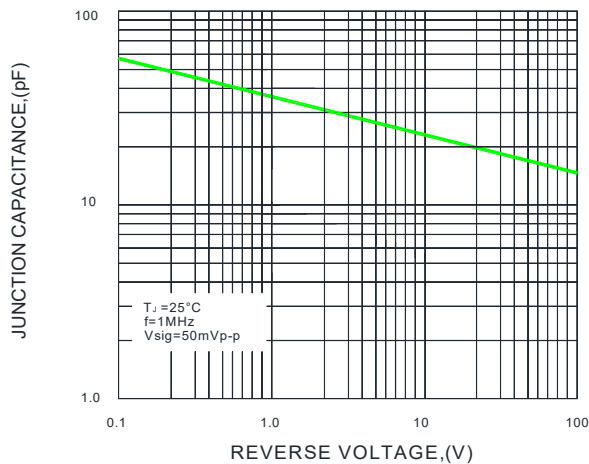
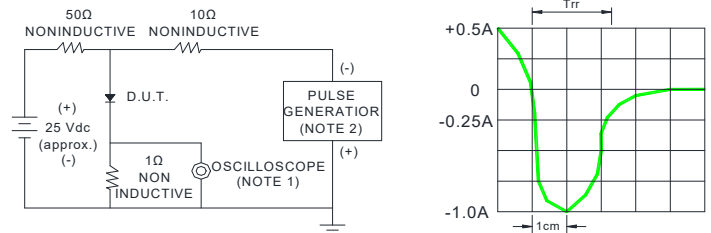


FIG.6-TEST CIRCUIT DIAGRAM AND REVERSE RECOVERY TIME CHARACTERISTIC



- NOTES : 1. Rise Time=7ns max. Input Impedance= 1 magohm. 22pF
- 2. Rise time=10ns max. Source Impedance= 50 ohms

SET TIME BASE FOR 50/100ns/cm



MUR2005 THRU MUR2060

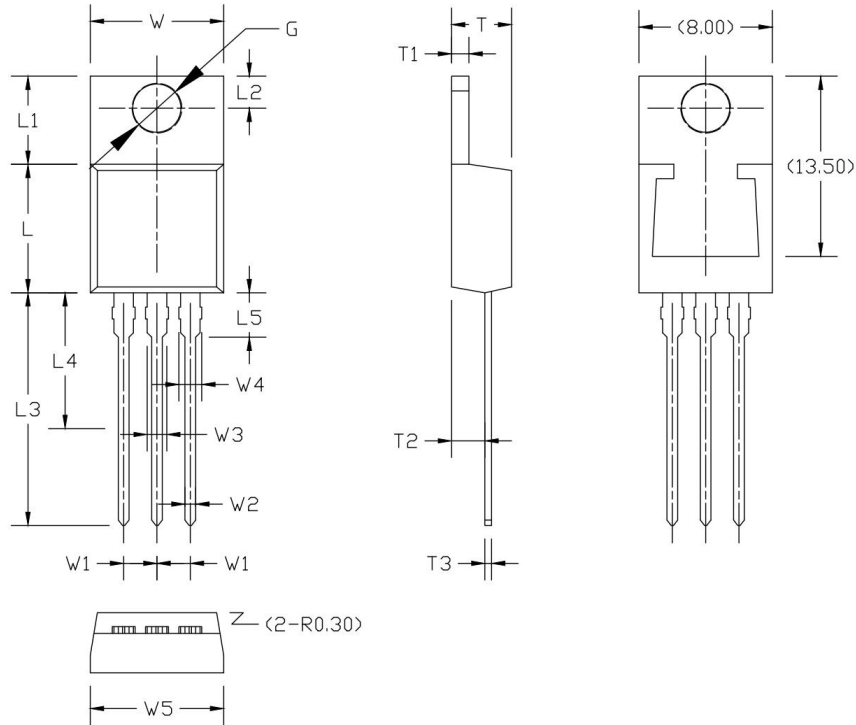
VOLTAGE RANGE

100 to 600 Volts

CURRENT

20.0 Ampere

Package Outline Dimensions millimeters



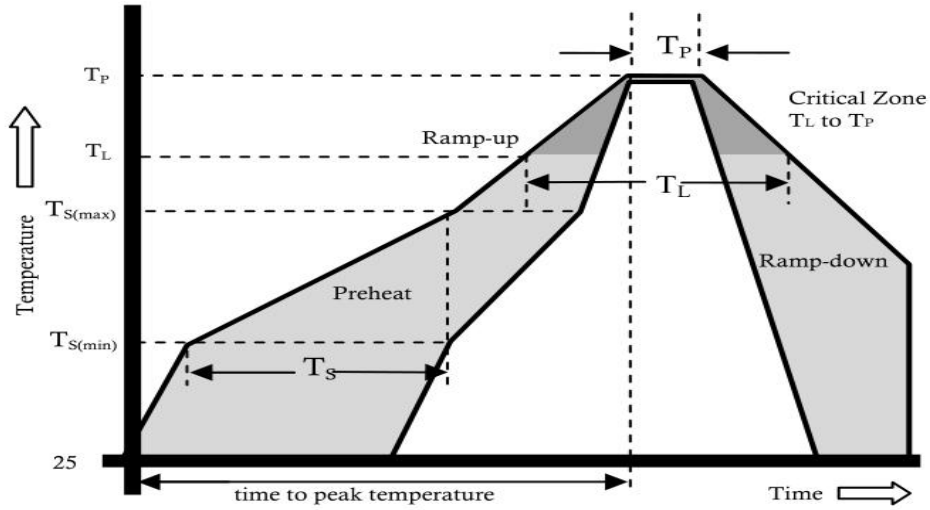
Symbol	Size		Symbol	Size		Symbol	Size		Symbol	Size	
	Min	Max		Min	Max		Min	Max		Min	Max
W	9.66	10.28	W5	9.80	10.20	L4	6.60	7.10	T3	0.35	0.45
W1	2.54	(TYP)	L	8.30	9.00	L5	3.69	4.10	G(Φ)	3.70	3.90
W2	0.70	0.95	L1	6.10	6.60	T	4.30	4.70			
W3	1.17	1.37	L2	2.70	2.90	T1	1.15	1.40			
W4*	1.32	1.72	L3	12.70	14.27	T2	2.20	2.80			



MUR2005 THRU MUR2060

VOLTAGE RANGE 100 to 600 Volts
CURRENT 20.0 Ampere

Reflow Profile



Reflow Condition		Pb-Free Assembly
Pre Heat	Temperature Min.	+150°C
	Temperature Max.	+200°C
	Time(Min to Max)	60-180 secs.
Average ramp up rate(Liquidus Temp(TL) to peak)		3°C/sec. Max.
TS(max) to TL - Ramp-up Rate		3°C/sec. Max.
Reflow	Temperature (TL)(Liquidus)	+217°C
	Temperature (TL)	60-150 secs.
Peak Temp (TP)		+(260+0/-5)°C
Time within 5°C of actual Peak Temp (TP)		25 secs.
Ramp-down Rate		6°C/sec. Max.
Time 25°C to peak Temp (TP)		8 min. Max.
Do not exceed		+260°C



MUR2005 THRU MUR2060

VOLTAGE RANGE	100 to 600 Volts
CURRENT	20.0 Ampere

Disclaimer

The information presented in this document is for reference only. Chongqing changjie Electronic Technology Co., Ltd. reserves the right to make changes without notice for the specification of the products displayed herein to improve reliability, function or design or otherwise.

The product listed herein is designed to be used with ordinary electronic equipment or devices, and not designed to be used with equipment or devices which require high level of reliability and the malfunction of which would directly endanger human life (such as medical instruments, transportation equipment, aerospace machinery, nuclear-reactor controllers, fuel controllers and other safety devices), Changjie or anyone on its behalf, assumes no responsibility or liability for any damages resulting from such improper use of sale.

This publication supersedes & replaces all information previously supplied. For additional information, please visit our website [http:// www.czlangjie.com](http://www.czlangjie.com) , or consult your nearest Langjie's sales office for further assistance.