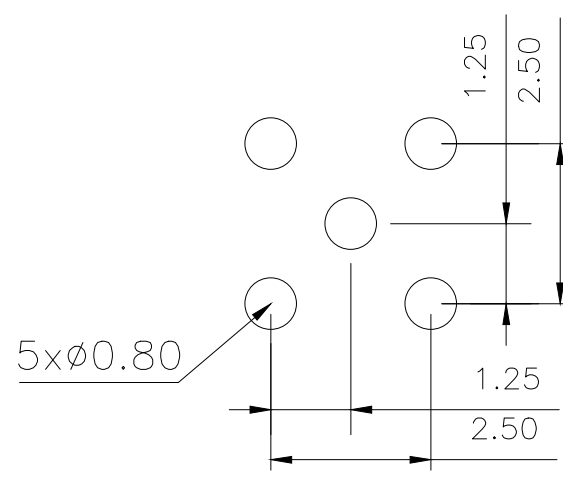


Technical requirements	
Characteristic impedance	50Ω
Frequency range	6GHZ
Contact resistance	
Inner conductor	<5mΩ
Outer conductor	<2.5mΩ
Standing ratio	
Straight	<1.25/3GHz
Curved	<1.25/3GHz
Withstand voltage	500V/50Hz
Insulated resistance	>1000MΩ
Electrical resistance	>500Ω
Appearance: no shift point burr scratch surface bright, no dirt, no deformation, etc	



PCB.WELDING DRAWING (TOLERANCE:±0.05)

1	主体	1	黄铜	镀金
2	绝缘体	1	PTFE	
3	母针	1	黄铜	镀金
序号	名称	数量	材料	备注

MANUFACTURE DWG		东莞市讯普电子科技有限公司 DongGuan XunPu Electronics Co.,Ltd		
UNLESS OTHERWISE SPECIFIED TOLERANCES		TITLE: 直插—母头—方3.6*H7.5		
DECIMALS:	ANGLES:		PAR	MMCX-KE-211-SQ3.6xH7.5
X.X±0.30	X.*±5°		DWN	
X.XX±0.20	X.X*±1°		CHKD	
X.XXX±0.10			APVD	
		CUSTOMER COPY	SCALE N:A	UNIT:MM
			SIZE:A4	SHEET:1F1
				REV:A