

ESDU2271WS

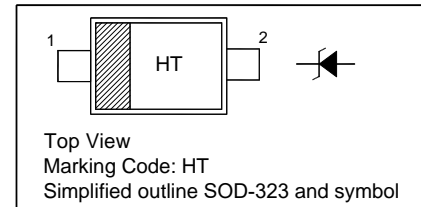
ESD Protection Diode

Features

- Low leakage current

PINNING

PIN	DESCRIPTION
1	Cathode
2	Anode

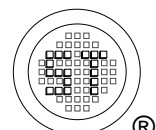


Absolute Maximum Ratings ($T_a = 25^\circ\text{C}$)

Parameter	Symbol	Value	Unit
Peak Pulse Power ($t_p = 8/20 \mu\text{s}$)	P_{PK}	1375	W
Peak Pulse Current ($t_p = 8/20 \mu\text{s}$)	I_{PP}	25	A
IEC61000-4-2 (ESD) Air Contact	V_{ESD}	± 30 ± 30	KV
Operation Temperature Range	T_j	- 40 to + 125	$^\circ\text{C}$
Storage Temperature Range	T_{stg}	- 55 to + 150	$^\circ\text{C}$

Characteristics at $T_a = 25^\circ\text{C}$

Parameter	Symbol	Min.	Max.	Unit
Reverse Stand-Off Voltage	V_{RWM}	-	22	V
Reverse Breakdown Voltage at $I_R = 1 \text{ mA}$	$V_{(BR)R}$	25.5	33.5	V
Reverse Current at $V_{RWM} = 22 \text{ V}$	I_R	-	100	nA
Clamping Voltage at $I_{PP} = 10 \text{ A}$, $t_p = 8/20 \mu\text{s}$ at $I_{PP} = 25 \text{ A}$, $t_p = 8/20 \mu\text{s}$	V_C	- -	40 55	V
Junction Capacitance at $V_R = 0 \text{ V}$, $f = 1 \text{ MHz}$	C_j	-	250	pF



Electrical characteristic curves

Fig 1. Pulse Waveform

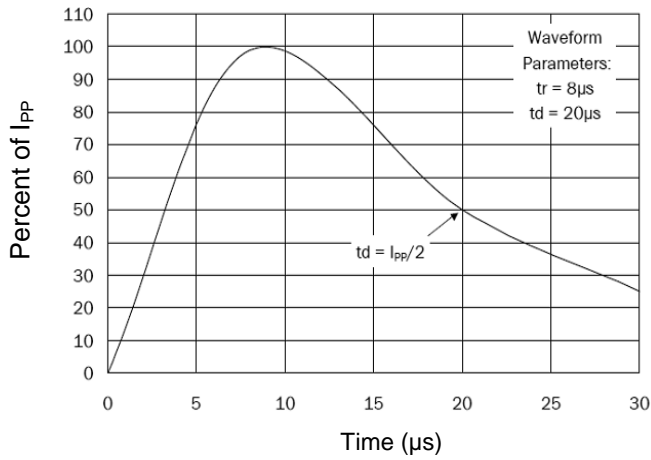


Fig 2. Power Derating Curve

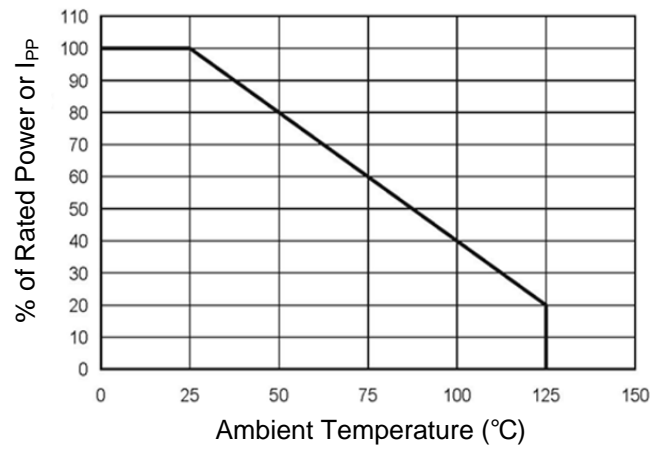


Fig 3. Clamping Voltage Curve

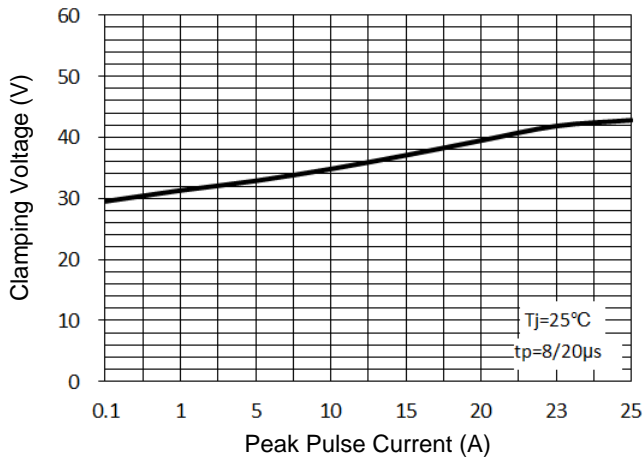


Fig 4. Junction Capacitance

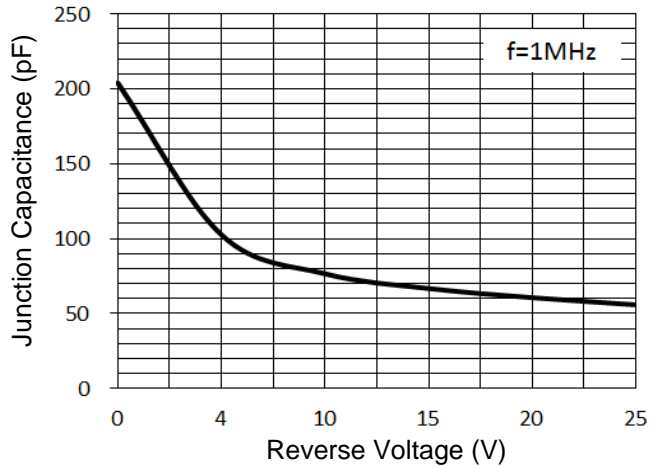
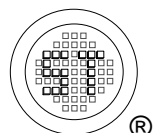
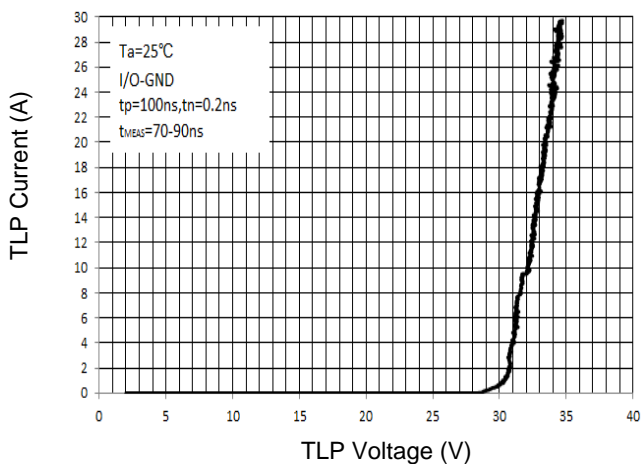


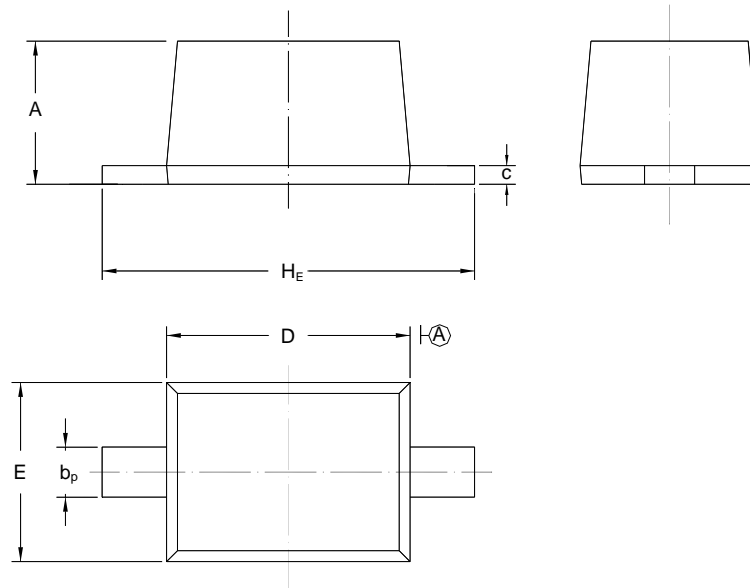
Fig 5 TLP Curve



PACKAGE OUTLINE

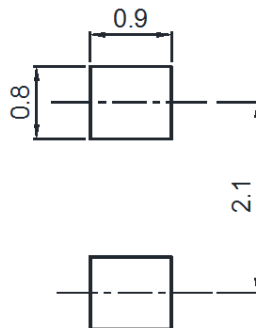
Plastic surface mounted package; 2 leads

SOD-323



UNIT	A	b _p	C	D	E	H _E
mm	1.10 0.80	0.40 0.25	0.15 0.10	1.80 1.60	1.35 1.15	2.80 2.30

Recommended Soldering Footprint



Packing information

Package	Tape Width (mm)	Pitch		Reel Size		Per Reel Packing Quantity
		mm	inch	mm	inch	
SOD-323	8	4 ± 0.1	0.157 ± 0.004	178	7	3,000

Marking information

" III " = Cathode line

" HT " = Part No.

Font type: Arial

