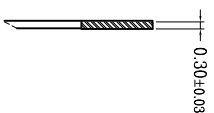
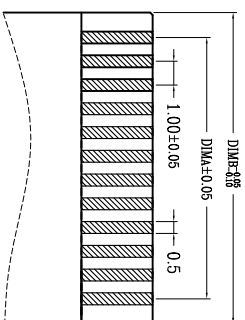
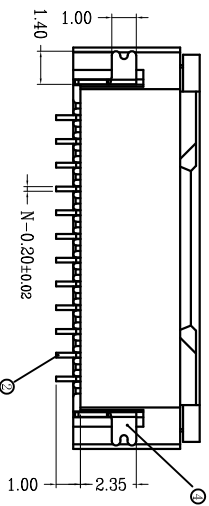
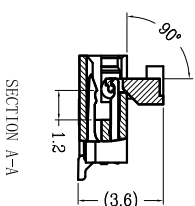
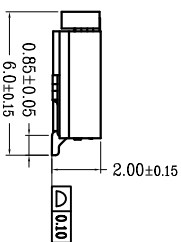
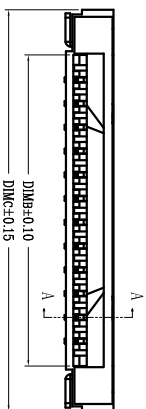
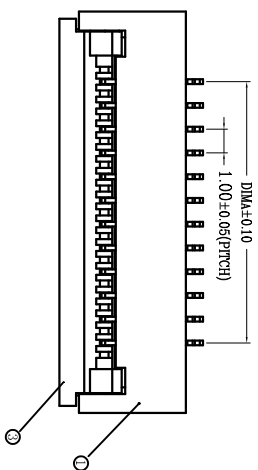
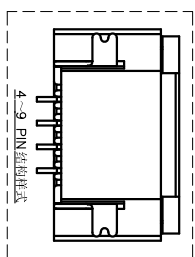
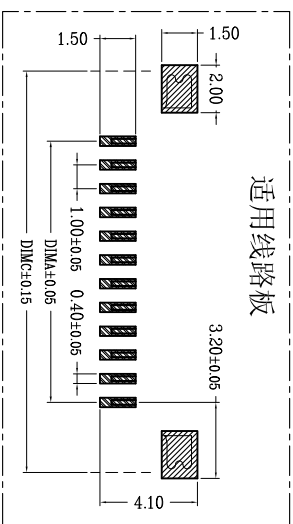


REV.	ECN. NO.	APPD.
A		
序号	品名	材质
①	0.5mm 盖板芯 (12.0)	LCF U94V40 本色
②	0.5mm 盖端子 (12.0)	磷青铜/表面镀锌
③	0.5mm 盖后盖 (12.0)	LCF U94V40 黑色
④	0.5mm 盖垫片 (12.0)	黄铜/表面镀锌



适用扁平线



适用线路板

CKT	DIMA	DIMB	DIMC
4	3.00	5.10	8.90
5	4.00	6.10	9.90
6	5.00	7.10	10.90
7	6.00	8.10	11.90
8	7.00	9.10	12.90
9	8.00	10.10	13.90
10	9.00	11.10	14.90
11	10.00	12.10	15.90
12	11.00	13.10	16.90
13	12.00	14.10	17.90
14	13.00	15.10	18.90
15	14.00	16.10	19.90
16	15.00	17.10	20.90
17	16.00	18.10	21.90
18	17.00	19.10	22.90
19	18.00	20.10	23.90
20	19.00	21.10	24.90
21	20.00	22.10	25.90
22	21.00	23.10	26.90
23	22.00	24.10	27.90
24	23.00	25.10	28.90
25	24.00	26.10	29.90
26	25.00	27.10	30.90
27	26.00	28.10	31.90
28	27.00	29.10	32.90
29	28.00	30.10	33.90
30	29.00	31.10	34.90

MINTRON CO.,LTD.

TITLE: FPC1.0 掀盖卧式下接 (H=2.0)

- 技术指标:
1. 塑件表面应光洁、无毛边、无明显收缩、缺胶、裂纹等现象。
 2. 温度范围: -25° C~85° C.
 3. 额定电压: 50V, AC/DC (等效).
 4. 接触电阻: ≤0.03Ω.
 5. 绝缘电阻: ≥500MΩ
 6. 产品料号:
- XW10202-XX X X
- NO OF CKT (产品PIN数)
- Plating (电镀方式)
- 0: 端子全镀锡
- 1: 端子全金 (G/F OVERALL)
- 2: 端子半金锡
- Packing (包装方式)
- T: TUBE管装
- R: TAPE & REEL 卷装

X.	± 0.30	X.°	± 5°
X	± 0.20	X.°	± 2°
.XX	± 0.10	.XX°	± 1°
.XXX	± 0.05	.XXX°	± 0.5°

FPC CONNECTOR	QTY

NAME (INTENDED USE)	UNITS	mm
	MAT'L	
	FINISH	

PART NO. (INTENDED USE)	APPD:	SUNNY
	CHKD:	LUSA
	DR:	ZOE

DWG NO.:	SCALE	SHEET	REV.
XW10202-XXXX	1/1	1/1	A

1 2 3 4 5 6 7