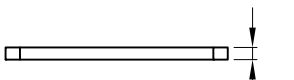
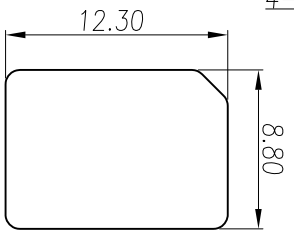
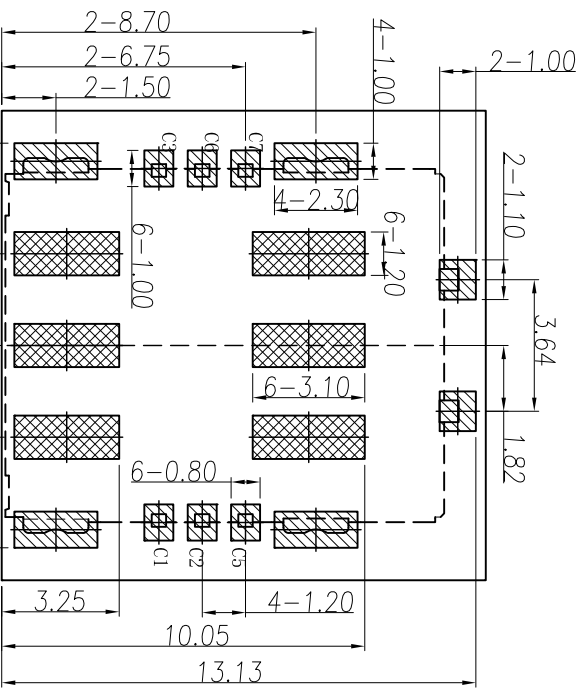
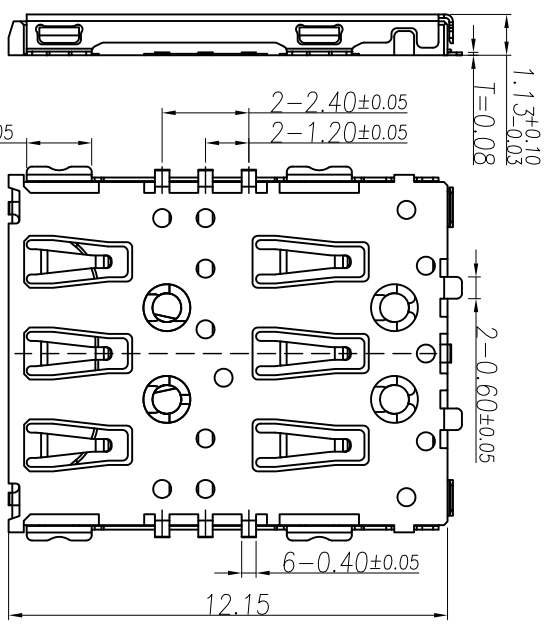
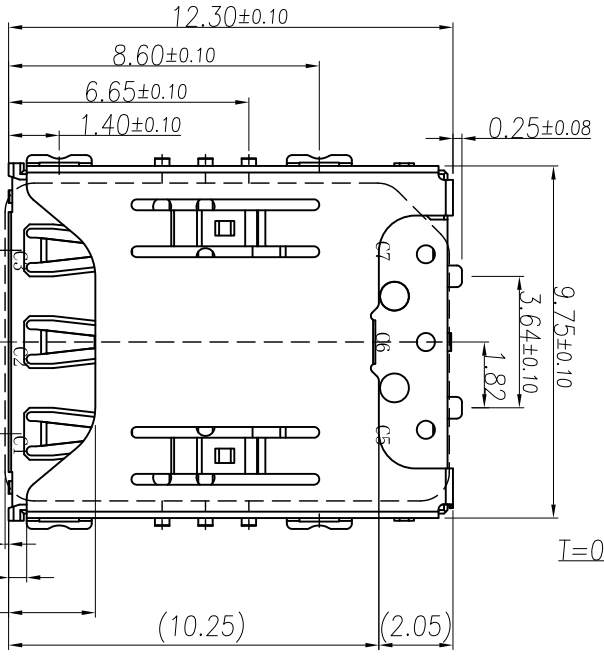
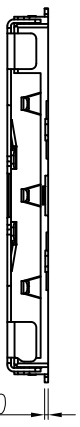


ROHS



RECOMMENDED PCB LAYOUT

TOLERANCE: ± 0.05

- ▨ SMT SOLDER AREA
- ▩ COPPER RESTRICTED AREA
- 1. TOUCH AREA OF CONTACT
- TIPS NO ELECTRICAL FUNCTION
- 2. NO FIRST PCB LAYOUT
- CIRCUITS IN THE AREA

MINTRON TECHNOLOG CO.,LTD.

NOTES:
 1. MATERIAL:
 HOUSING: High Temperature Thermoplastic
 Terminal: Copper Alloy
 Shell: Stainless Steel
 2. PLATING:
 Terminal: 30μ Ni UNDERPLATED OVERALL
 C/F PLATED ON CONTACT AREA
 100μ TIN PLATED ON SOLDER AREA
 Shell: 50μ Ni UNDERPLATED OVERALL
 C/F PLATED ON CONTACT AREA AND SOLDER AREA
 3. TECHNICAL SPECIALITY:
 RATED VOLTAGE: 30V AC MAX.
 CURRENT RATING: 0.5A MAX.
 INSULATION RESISTANCE: 100MΩ MIN
 CONTACT RESISTANCE: 100mΩ MAX
 WITHSTANDING VOLTAGE: 500V AC FOR 1 MINUTES
 OPERATING TEMPERATURE: -20°C ~ +85°C Humidity: 80%RH MAX

PIIN/NOASSIGNMENT	X	±0.30	X	±0.012
C1	VCC	.XX ±0.20	.XX	±0.008
C2	RST	.XXX ±0.10	.XXX	±0.004
C3	CLK			
C5	GND			
C6	VPP			
C7	I/O			

MILLIMETERS		INCH	
X°	±2°	X°	±2°
.XX	±0.20	.XX	±0.008
.XXX	±0.10	.XXX	±0.004

TITLE	1. 13H NO-PUSH NANO-SHM CARD	DR
PART NO.	MT102315212	CHKD
PRO J.	PAGE 1/2	UNITS mm
SIZE	A4	SCALE 1:1
		DWG NO. NS008-000

