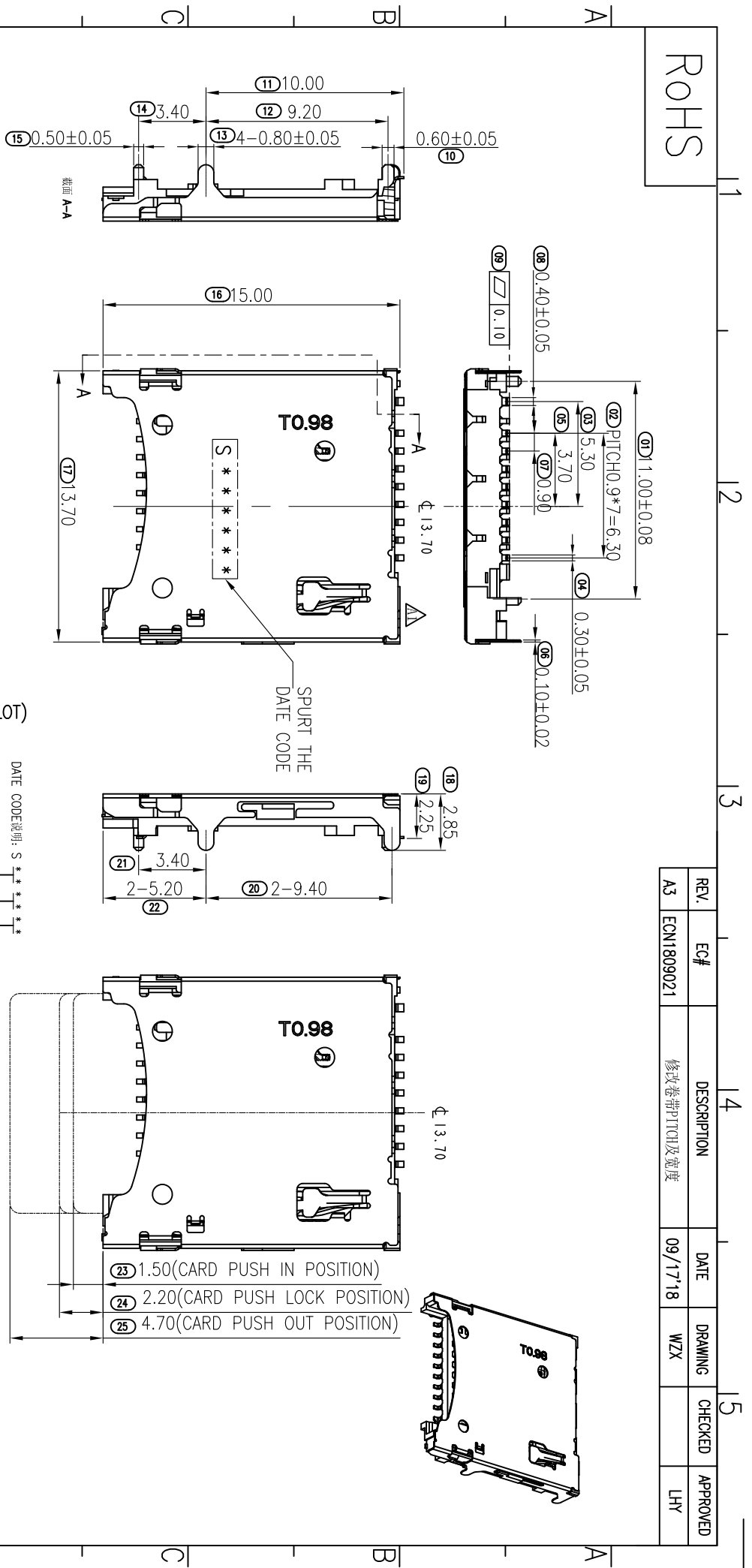


ROHS

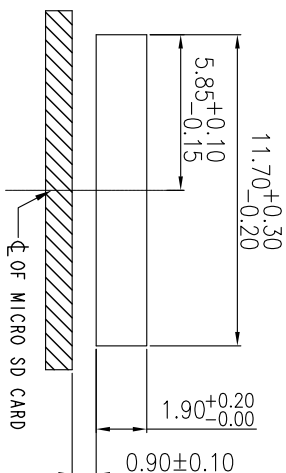
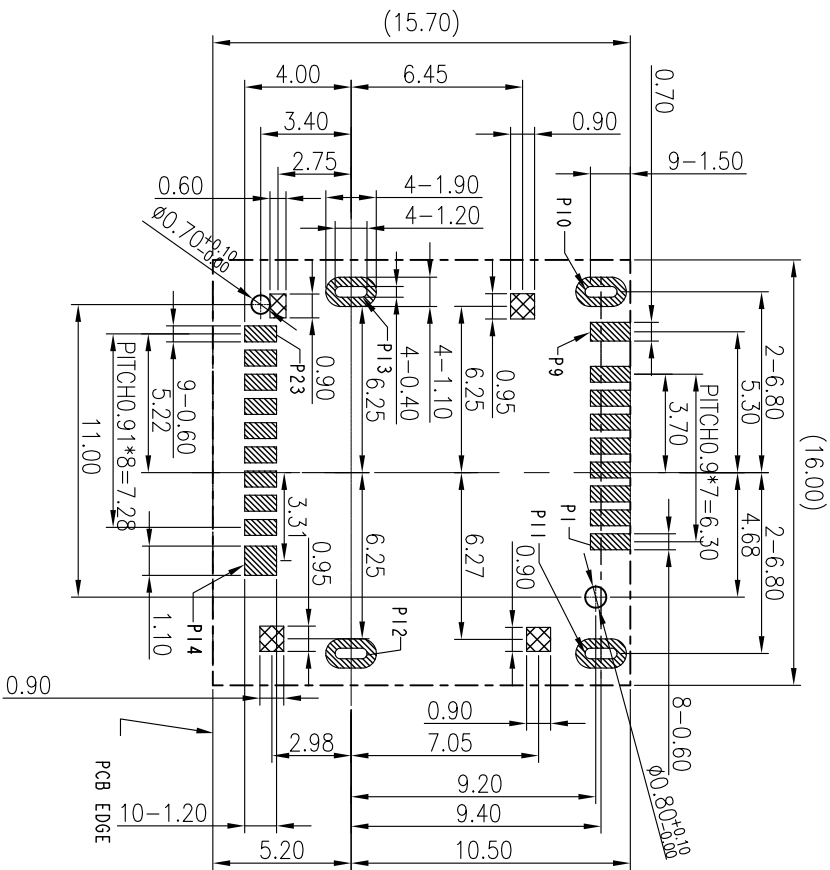
REV.	EC#	DESCRIPTION	DATE	DRAWING	CHECKED	APPROVED
A3	EGN1809021	修改卷带PITCH及宽度	09/17'18	WZX		LHY



MILLIMETERS	INCH	UNITS	MM
X° ± Z'	X° ± Z'	MAT'L	
X ± 0.30	XX ± 0.012	SEE NOTES	
XX ± 0.20	XXX ± 0.008	FINISH	
XXX ± 0.10	XXXX ± 0.004	SEE NOTES	

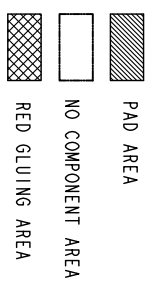
MINTRON TECHNOLOGY CO., LTD.		PART NUMBER:		TITLE:	
		MT1102031522		MicroSD 4.0 H2.25卡座客户图	
Appd:		CHKD:		DWG NO.:	
QTY		DR:		C-102031522-00	
SEE NOTES		SCALE		SHEET	
		1:1		1/3	
		REV.		A3	

ROHS



RECOMMEND ID DIMENSION

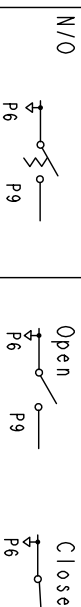
- NOTES:
- (1) MATERIAL:
 - 1-1. PLASTIC: LCP, THERMOPLASTIC UL 94V-0
 - COLOR: BLACK
 - 1-2. CONTACT: COPPER ALLOY.
 - 1-3. SHELL: STAINLESS STEEL.
 - (2) PLATING:
 - 2-1. CONTACT:
 - 2-1-1. CONTACT AREA: Au 3u" ; OVER Ni: 50u"
 - 2-1-2. SOLDER TAIL AREA: Matted TIN 80u" Min. OVER Ni: 50u"
 - 2-2. SHELL:
 - 2-2-1. SOLDERABILITY: OVER PLATING Ni 30u" OVER ALL.
 - 2-2-1. SOLDERABILITY TO BE 0.10mm MAX
 - (3) CONTACT AND TAIL COPLANARITY TO BE 0.10mm MAX



Recommended P.C.B LAYOUT
TOP VIEW(TOLERANCE+/-0.05)

Opening/Close of Switch

Card Uninsertion	Card Detect Switch	Open
Card Half Insertion	Open	Open
Card Insertion	Close	Close



Pin No.	Pin Assignment
P1	MICRO SD DAT2
P2	MICRO SD CD/DAT3
P3	MICRO SD CMD
P4	MICRO SD VDD1
P5	MICRO SD CLK
P6	MICRO SD VSS
P7	MICRO SD DAT0/RCLK
P8	MICRO SD DAT1/RCLK
P9	MICRO SD CD
P10	GND
P11	GND
P12	GND
P13	GND
P14	GND
P15	MICRO SD VDD2
P16	MICRO SD SWIO
P17	MICRO SD VSS
P18	MICRO SD DO+
P19	MICRO SD DO-
P20	MICRO SD VSS
P21	MICRO SD DI-
P22	MICRO SD DI+
P23	MICRO SD VSS

MINTRON TECHNOLOGY CO.,LTD.

MILLIMETERS	INCH	UNITS	MM
X ⁿ ± Z	X ⁿ ± Z	MATL	SEE NOTES
.X ± 0.30	.XX ± 0.012	FINISH	SEE NOTES
.XX ± 0.20	.XXX ± 0.008	QTY	SEE NOTES
.XXX ± 0.10	.XXXX ± 0.004	DR:	

PART NUMBER:	MT102031522
APPD:	
CHKD:	

TITLE:	MicroSD 4.0 H2.25卡座客户图
DWG NO.:	C-102031522-00
SCALE	1:1
SHEET	2/3
REV.	A3