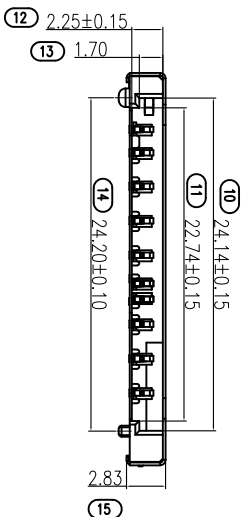
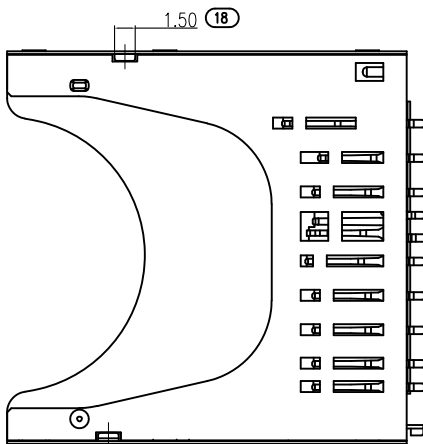
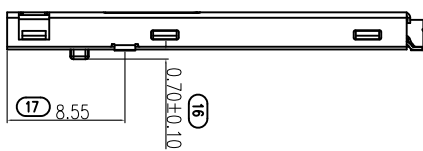
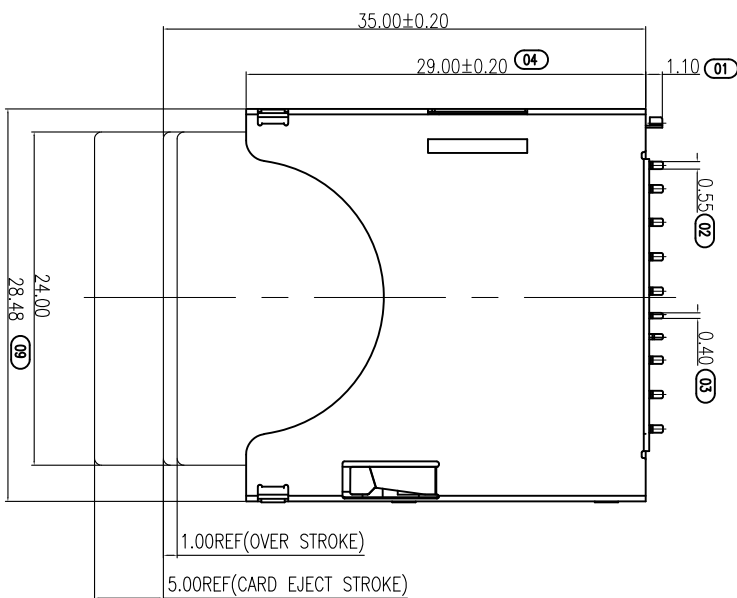
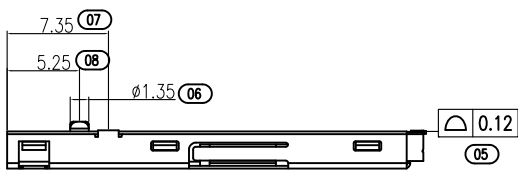
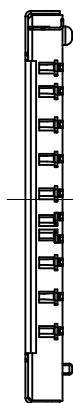


ROHS

REV.	EC#	DESCRIPTION	DATE	DRAWING	CHECKED	APPROVED
A2	ECN1704007	侧面视图	23/06/16	HFL		HAIYONG



NOTE:

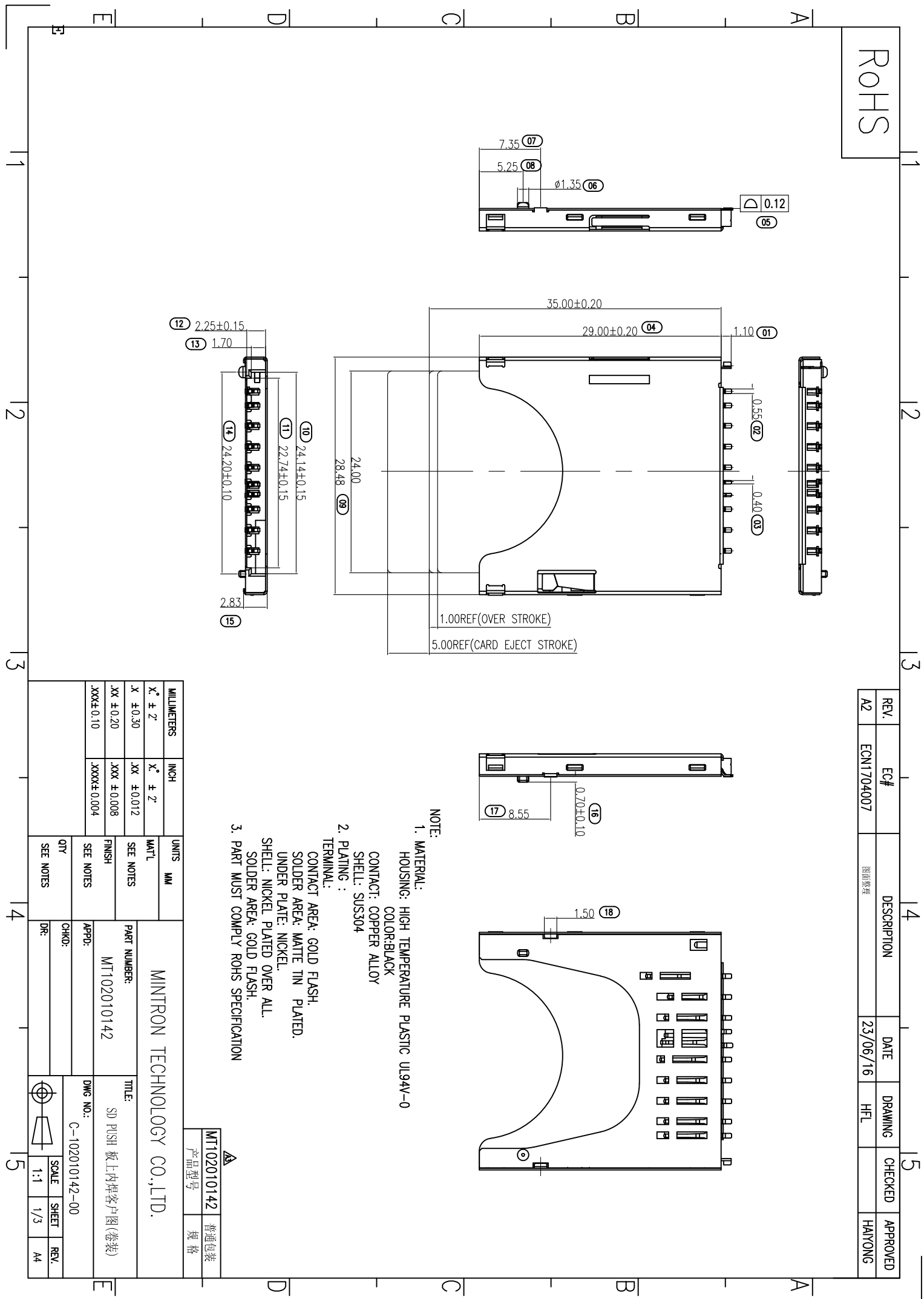
- MATERIAL:  
HOUSING: HIGH TEMPERATURE PLASTIC UJ.94V-0  
CONTACT: COPPER ALLOY  
SHELL: SUS304
- PLATING :  
TERMINAL:  
CONTACT AREA: GOLD FLASH.  
SOLDER AREA: MATTE TIN PLATED.  
UNDER PLATE: NICKEL.  
SHELL: NICKEL PLATED OVER ALL.  
SOLDER AREA: GOLD FLASH.
- PART MUST COMPLY ROHS SPECIFICATION

MT102010142 普通包装  
产品型号 规格

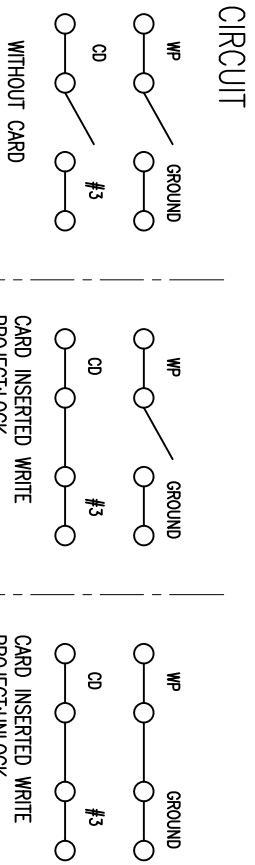
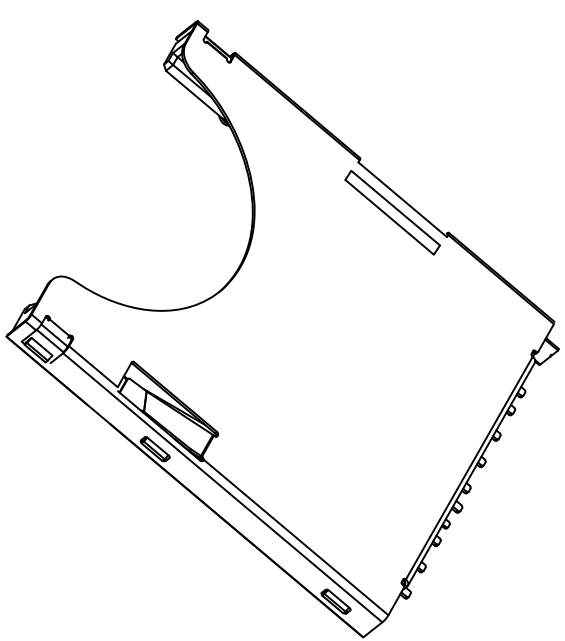
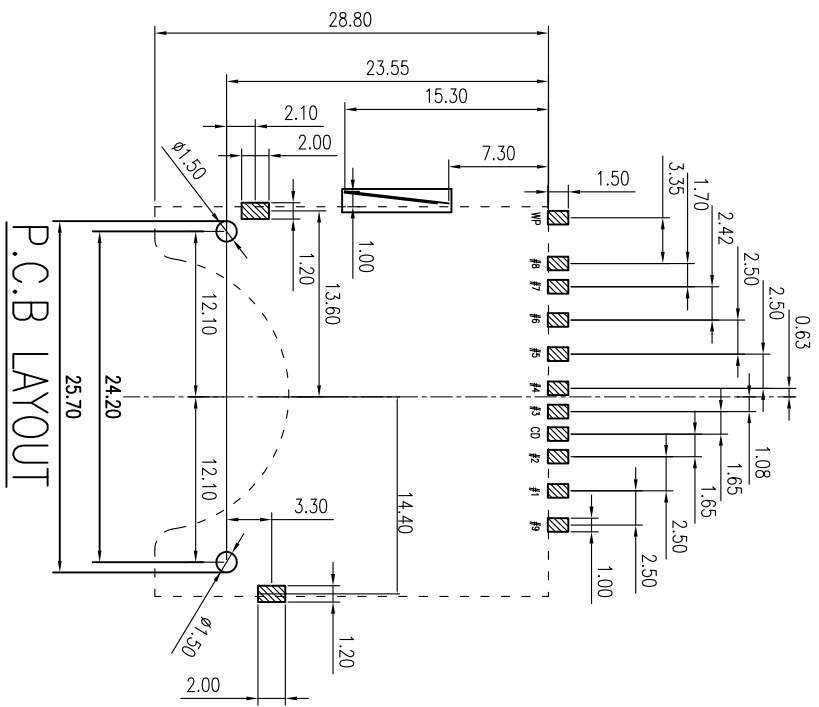
MINTRON TECHNOLOGY CO.,LTD.

MILLIMETERS	INCH	UNITS	MM
X' ± Z'	X' ± Z'	MAT'L	
X ± 0.30	XX ± 0.012	SEE NOTES	
XX ± 0.20	XXX ± 0.008	FINISH	
.XXX±0.10	.XXXX±0.004	SEE NOTES	

PART NUMBER: MT102010142	TITLE: SD PUSH 板上内焊客户图(卷装)
APPD: C-102010142-00	DWG NO.:
CHKD: DR:	SCALE 1:1
QTY SEE NOTES	SHEET 1/3
	REV. A4



ROHS



P.C.B LAYOUT

SD CARD PIN DESIGN

PIN NO.	NAME	TYPE	DESCRIPTION
#1	CD/DAT3	I/O/PP	CARD DETECT/DATA LINE(BIT3)
#2	CMD	PP	COMMAND/RESPONSE
#3	VSS1	S	SUPPLY VOLTAGE GROUND
#4	VDD	S	SUPPLY VOLTAGE
#5	CLK	I	CLOCK
#6	VSS2	S	SUPPLY VOLTAGE GROUND
#7	DAT0	I/O/PP	DATA LINE(BIT 0)
#8	DAT1	I/O/PP	DATA LINE(BIT 1)
#9	DAT2	I/O/PP	DATA LINE(BIT 2)

MT102010142	普通包装
产品型号	规格

MILLIMETERS	INCH
X <sup>n</sup> ± Z'	X <sup>n</sup> ± Z'
X ± 0.30	XX ± 0.012
XX ± 0.20	XXX ± 0.008
.XXX ± 0.10	.XXXX ± 0.004

UNITS	MM	MINITRON TECHNOLOGY CO.,LTD.	
MATL	SEE NOTES	PART NUMBER:	MT102010142
FINISH	SEE NOTES	TITLE:	SD PUSH 板上内焊客户图(卷装)
QTY	SEE NOTES	APPD:	
DR:		CHKD:	
		DWG NO.:	C-102010142-00
		SCALE	1:1
		SHEET	2/3
		REV.	A4