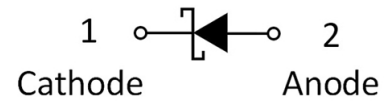
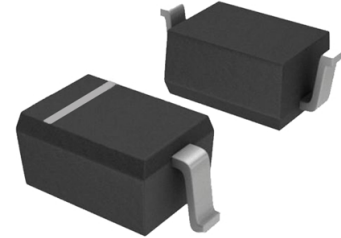


»Features

- Low forward voltage drop
- High current capability
- High reliability
- High surge current capability
- Epitaxial construction



»General Description

- Case: molded plastic
- Polarity: Color band denotes cathode
- Package: SOD-323 Plastic Package

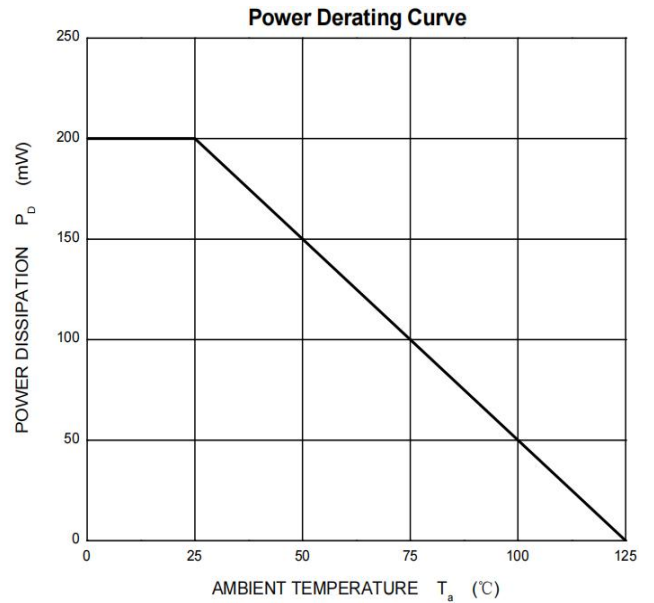
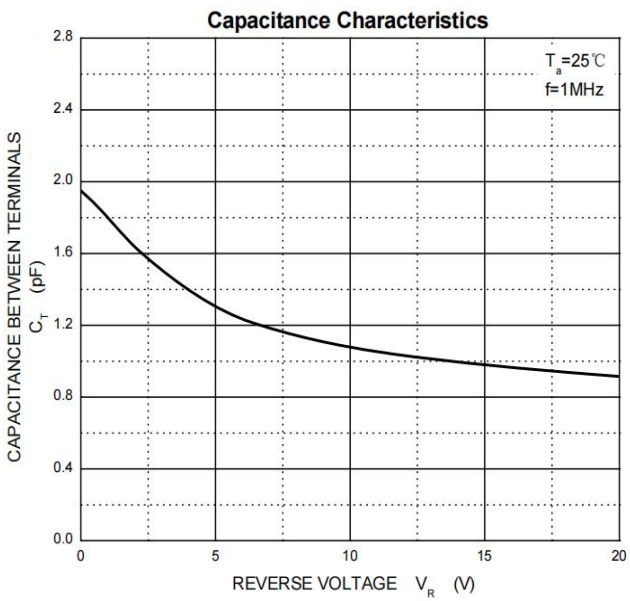
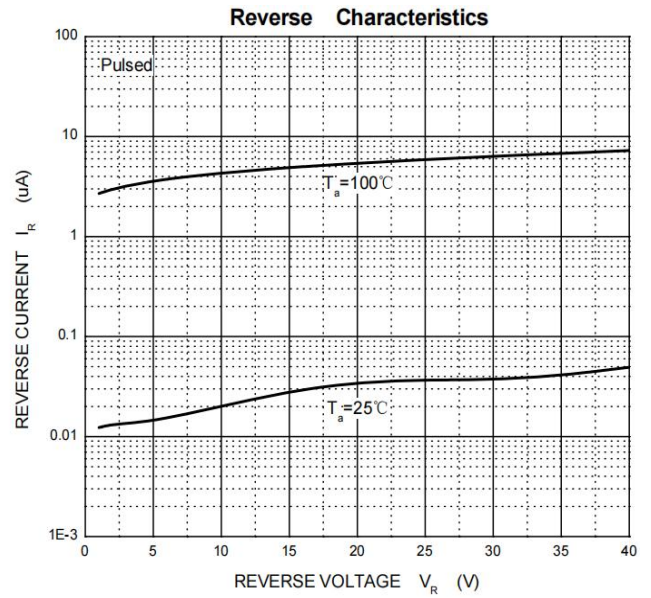
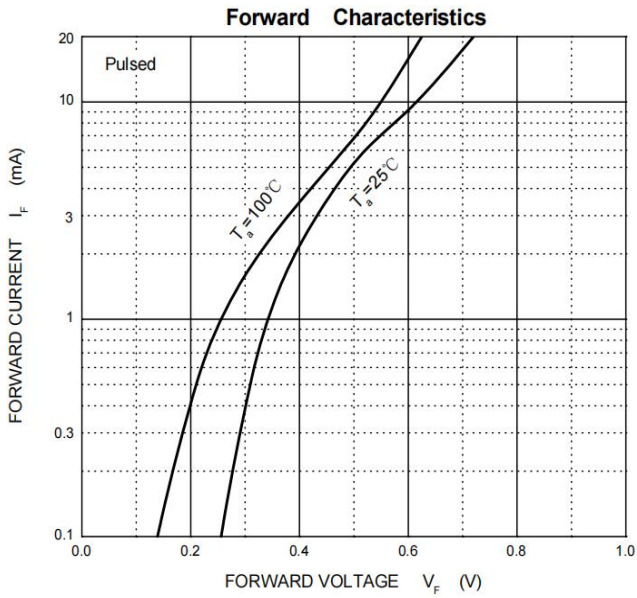
» Maximum Ratings @ $T_A=25^{\circ}\text{C}$ unless otherwise noted

Symbol	Parameter	Limit	Unit
VRRM VRWM VR	Peak Repetitive Peak Reverse Voltage Working Peak Reverse Voltage DC Blocking Voltage	70	V
IFM	Forward Continuous Current	70	mA
IFSM	Non-repetitive Peak Forward Surge Current@8.3mS	100	mA
Pd	Power Dissipation	200	mW
R θ JA	Thermal Resistance From Junction To Ambient	500	$^{\circ}\text{C}/\text{W}$
TJ	Operation Junction Temperature Range	-40~+125	$^{\circ}\text{C}$
TSTG	Storage Temperature Range	-55~+150	$^{\circ}\text{C}$

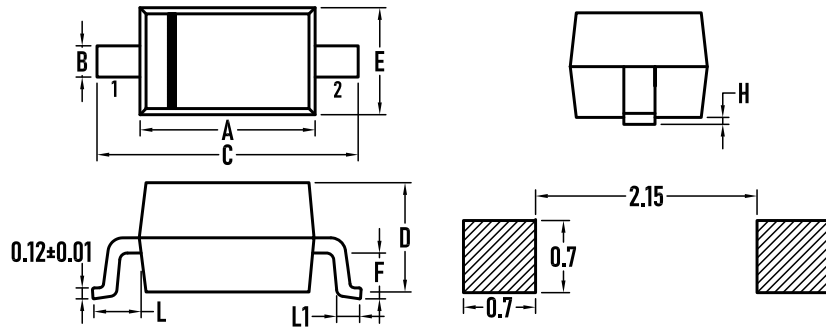
»Electrical Characteristics @ $T_A=25^{\circ}\text{C}$ unless otherwise noted

Symbol	Parameter	Test conditions	Min	Typ	Max	Unit
V(BR)	Reverse breakdown voltage	I _R =10 μ A	70			V
V _F (1)	Forward voltage(1)	I _F =1mA			0.41	V
V _F (2)	Forward voltage(2)	I _F =15mA			1.0	V
I _R	Reverse voltage leakage current	V _R =50V			100	nA
CT	Capacitance between terminals	V _R =0V, f=1.0MHz			2	pF
t _{rr}	Reverse recovery time	I _F =I _R =10mA I _{rr} =0.1X I _R , R _L =100 Ω			5	nS

»Typical Performance Characteristics (T_J = 25 °C, unless otherwise noted)

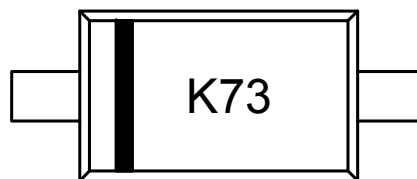


»Package Information SOD-323



SYMBOL	MILLIMETER		INCHES	
	MIN.	MAX.	MIN.	MAX.
A	1.600	1.800	0.063	0.071
B	0.250	0.350	0.010	0.014
C	2.500	2.700	0.098	0.106
D	–	1.000	–	0.039
E	1.200	1.400	0.047	0.055
F	0.080	0.150	0.003	0.006
L	0.475REF		0.019REF	
L1	0.250	0.400	0.010	0.016
H	0.000	0.100	0.000	0.004

»Marking



»Ordering information

Order code	Package	Base qty	Delivery mode
BAS70WS	SOD-323	3K	Tape and reel