

»Features

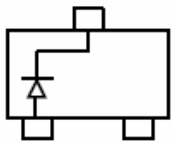
- Fast Switching Speed
- For General Purpose Switching Applications
- High Conductance



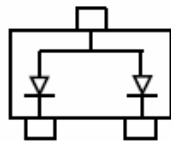
SOT-23

»General Description

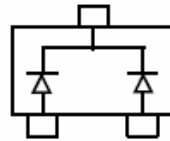
- SOT-23 Small Outline Plastic Package
- Mounting Position: Any



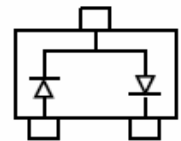
MMBD4148A:5H



MMBD4148CA :D6



MMBD4148CC :D5



MMBD4148SE : D 4

»Absolute Maximum Ratings @ $T_A=25^{\circ}\text{C}$ unless otherwise noted

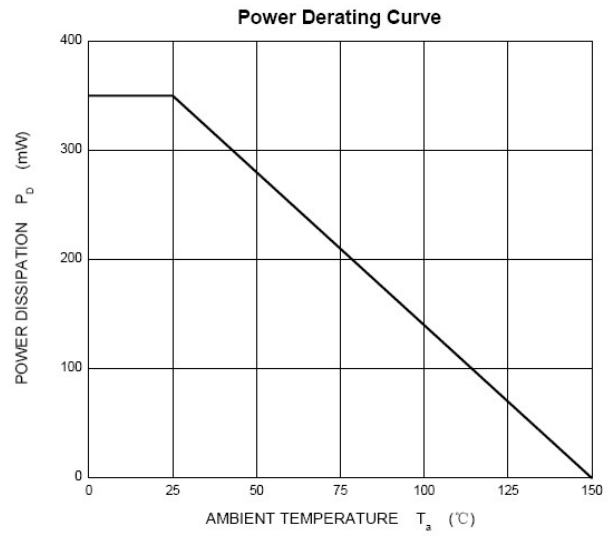
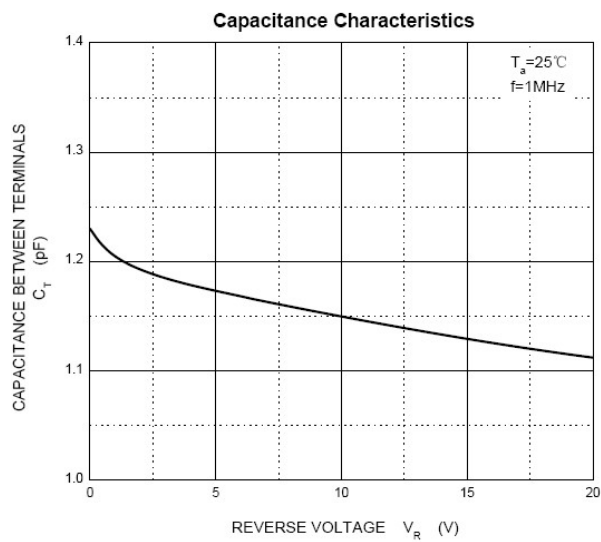
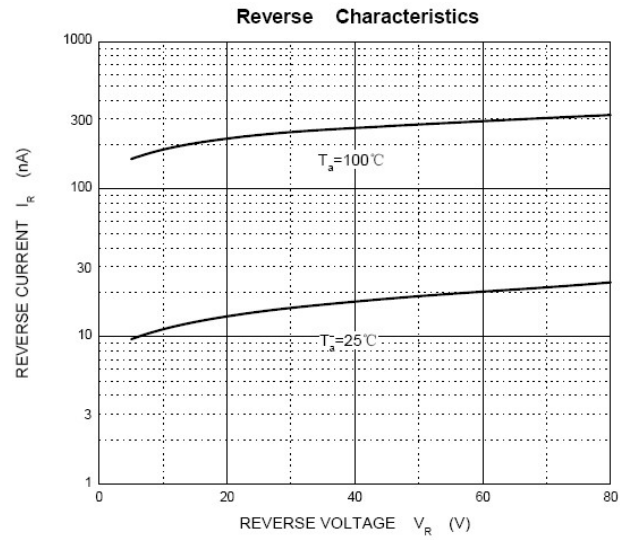
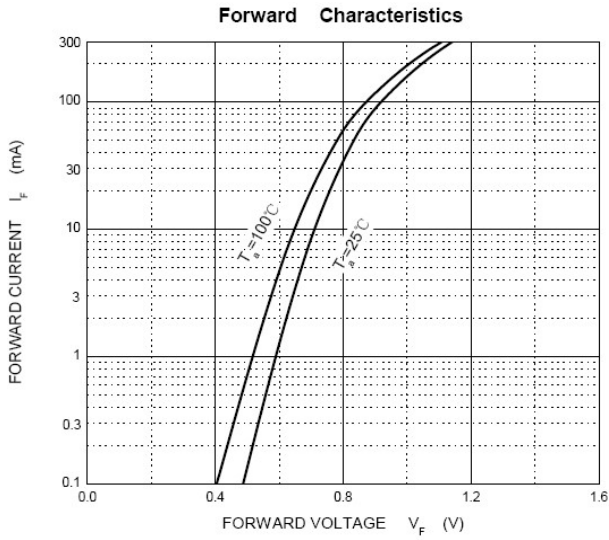
Parameters	Symbol	Value	Unit
Reverse Voltage	V_R	75	V
Peak Repetitive Reverse Voltage	V_{RRM}	100	V
Power Dissipation	P_d	350	mW
Average Rectified Current	I_o	200	mA
Non-Repetitive Peak Forward Surge Current @ $t=8.3\text{ms}$; $T_A=25^{\circ}\text{C}$	I_{FSM}	2.0	A
Operating junction temperature	T_j	150	$^{\circ}\text{C}$
Storage temperature range	T_s	-55-+150	$^{\circ}\text{C}$
Thermal Resistance from Junction to Ambient	$R_{\theta JA}$	357	$^{\circ}\text{C}/\text{W}$

Valid provided that electrodes are kept at ambient temperature.

»Electrical Characteristics @ $T_A=25^{\circ}\text{C}$ unless otherwise noted

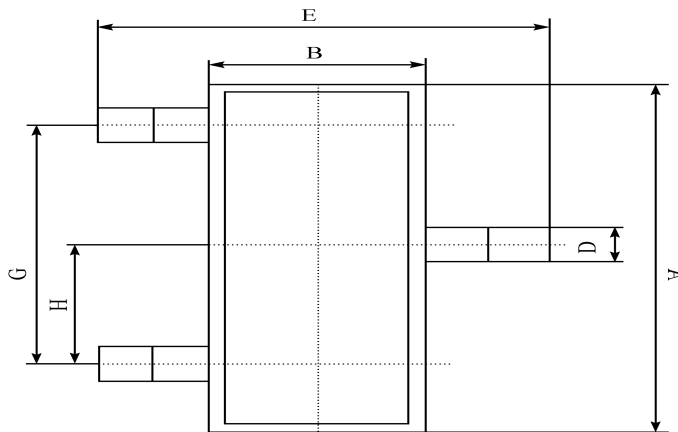
Symbols	Parameter	Test Condition	Limits		Unit
			Min	Max	
V(BR)	Reverse Voltage	IR=100uA	75		V
IR	Reverse Leakage Current	VR=75V	---	5.0	uA
		VR=25V	---	25	nA
VF	Forward Voltage	IF=10mA	---	1.00	V
TRR	Reverse Recovery Time	IF= IR=10mA	---	4	nS
		VR=6V,RL=100Ω			
		IRR=0.1 X IR			
CT	Capacitance	VR=0V, f=1MHZ	---	4	pF

»Typical Performance Characteristics (T_J = 25 °C, unless otherwise noted)

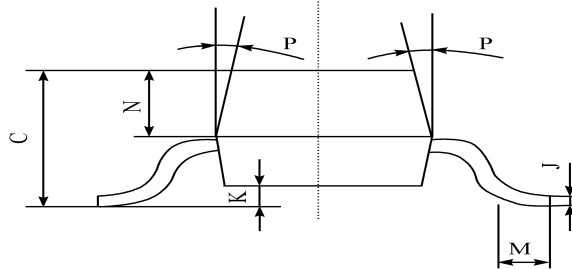


»Package Information

SOT-23



A	2.90 ± 0.10
B	1.30 ± 0.10
C	1.00 ± 0.10
D	0.40 ± 0.10
E	2.40 ± 0.20
G	1.90 ± 0.10
H	0.95 ± 0.05
J	0.13 ± 0.05
K	0.00-0.10
M	≥ 0.2
N	0.60 ± 0.10
P	7 ± 2°



»Ordering information

Order code	Package	Marking	Base qty	Delivery mode
MMBD4148A	SOT-23	5H	3K	Tape and reel
MMBD4148CA	SOT-23	D6	3K	Tape and reel
MMBD4148CC	SOT-23	D5	3K	Tape and reel
MMBD4148SE	SOT-23	D4	3K	Tape and reel