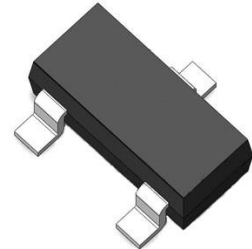


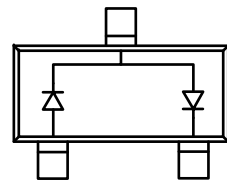
»Features

- Fast Switching Speed
- High Conductance
- Low forward voltage
- Fast reverse recovery time



»General Description

- SOT-23 Small Outline Plastic Package
- Polarity: Color band denotes cathode end
- Mounting Position: Any



»Absolute Maximum Ratings @ $T_A=25^{\circ}\text{C}$ unless otherwise noted

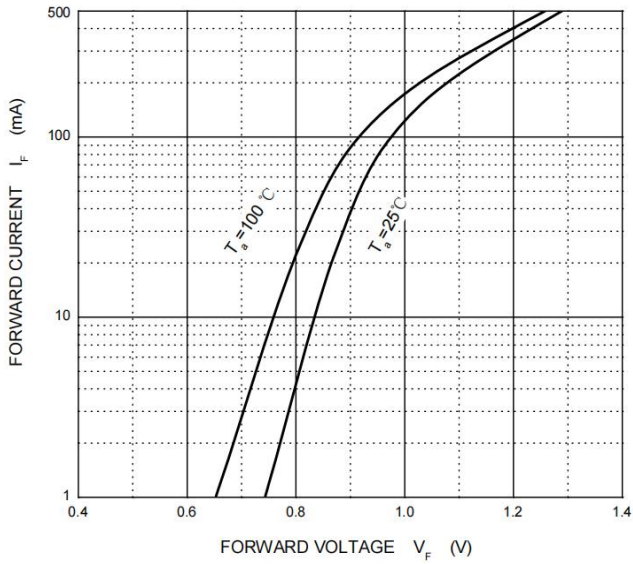
Symbol	Parameter	Value	Unit
VRM	Non-Repetitive Peak Reverse Voltage	70	V
VR	DC Blocking Voltage	70	V
IFM	Forward Continuous Current	500	mA
IO	Average Rectified Output Current	215	mA
IFSM	Non-repetitive Peak Forward Surge Current@8.3mS	1.0	A
Pd	Power Dissipation	200	mW
TJ	Operation Junction Temperature Range	-40~+125	$^{\circ}\text{C}$
TSTG	Storage Temperature Range	-55~+150	$^{\circ}\text{C}$

»Electrical Characteristics @ $T_A=25^{\circ}\text{C}$ unless otherwise noted

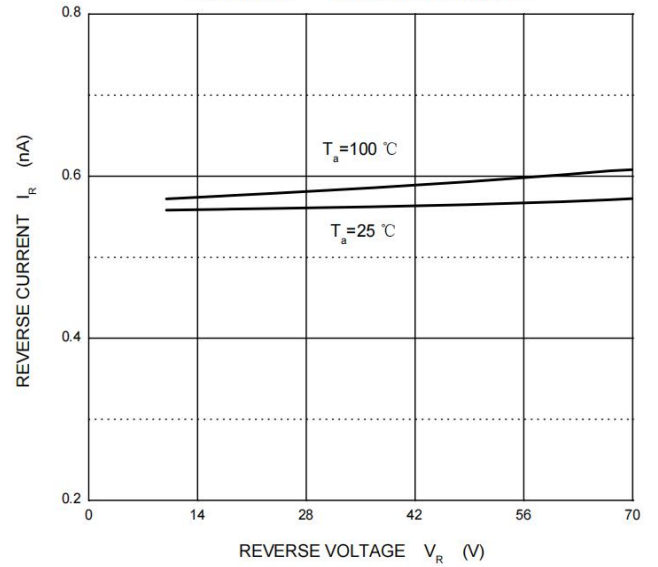
Symbol	Parameter	Test conditions	Min	Max	Unit
V(BR)	Reverse breakdown voltage	IR=100 μA	70		V
IR	Reverse voltage leakage current	VR=70V		5	nA
VF	Forward voltage	IF=1mA		0.9	V
		IF=10mA		1	V
		IF=50mA		1.1	V
		IF=150mA		1.25	V
CD	Diode capacitance	VR=0V, f=1MHz		2	pF
trr	Reverse recovery time	IF=IR=10mA		3	μS

»Typical Performance Characteristics (($T_J = 25\text{ }^\circ\text{C}$, unless otherwise noted))

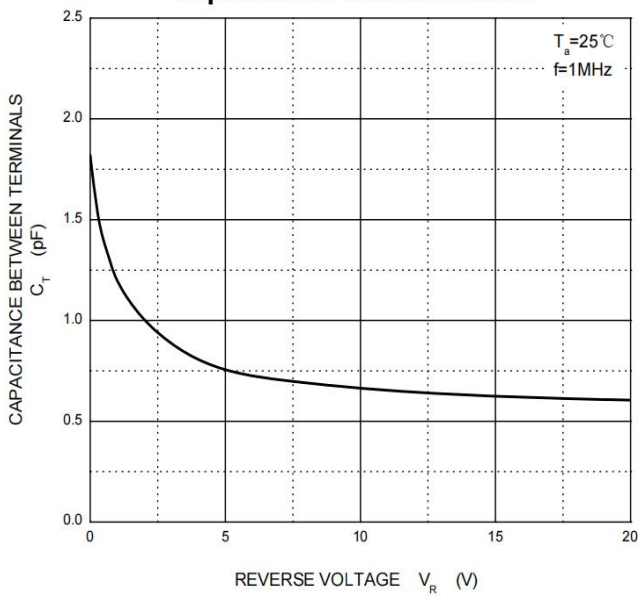
Forward Characteristics



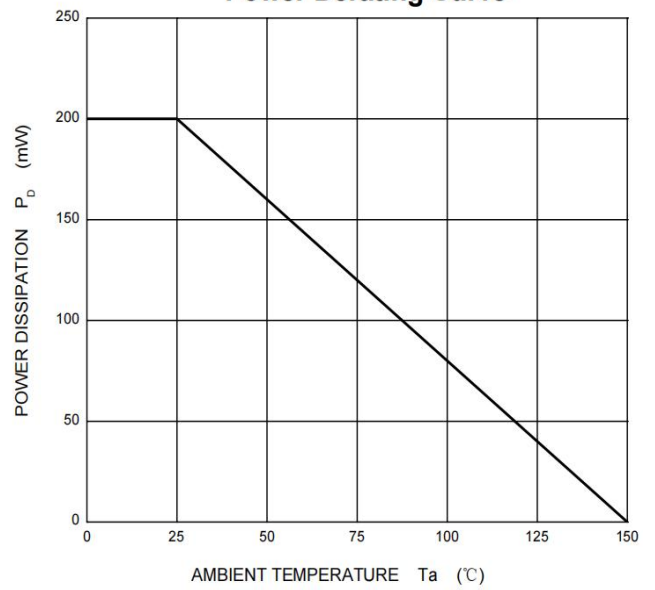
Reverse Characteristics



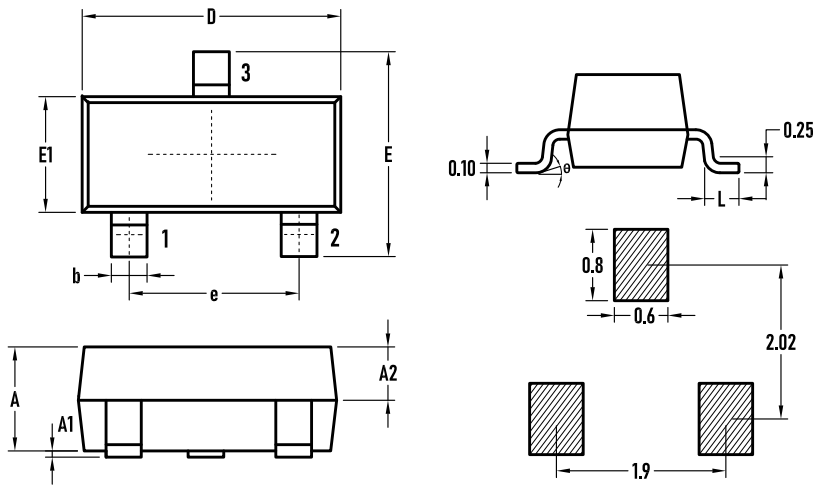
Capacitance Characteristics



Power Derating Curve

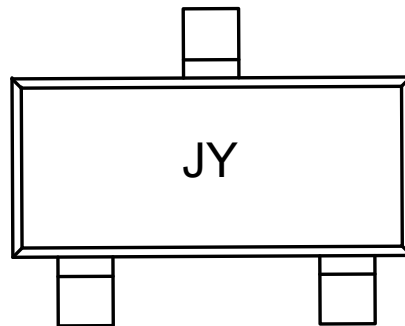


»Package Information SOT-23



SYMBOL	MILLIMETER		
	MIN.	Typ.	MAX.
A	0.90	1.00	1.10
A1	0.02	0.06	0.10
A2	–	0.60	–
D	2.85	2.90	2.95
b	0.37	0.40	0.43
E	2.35	2.40	2.45
E1	1.25	1.30	1.35
e	1.85	1.90	1.95
L	0.35	0.40	0.48
θ	0	–	6°

»Marking



»Ordering information

Order code	Package	Base qty	Delivery mode
BAV199	SOT-23	3K	Tape and reel