

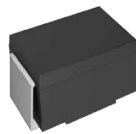
Features

Low capacitance
Cannot be damaged by voltage
Will not fatigue
Eliminate voltage overshoot
Glass passivated junction
Halogen free and RoHS compliant

Applications

CASE: SMA molded plastic
UL Flammability Classification Rating 94V0
Mounting Position:Any

Dimensions and Pin Configuration



SMA



Maximum Ratings & Thermal Characteristics

(Ratings at 25°C ambient temperature unless otherwise specified.)

Parameter	Symbol	Value	Units	Remarks
Peak Pulse Voltage	V_{PP}	4000	V	10/700us
Peak Pulse Current	I_{PP}	80	A	10/1000us
Peak Pulse Current	I_{PK}	250	A	8/20us
Peak One-cycle Surge Current	I_{TSM}	25	A	60Hz
Rate of Rise of Current	di/dt	500	A/us	
Typical Thermal Resistance Junction to Lead	$R_{\theta JL}$	20	°C/W	
Typical Thermal Resistance Junction to Ambient	$R_{\theta JA}$	100	°C/W	
Operating Temperature Range	T_J	-40 to 150	°C	
Storage Temperature Range	T_{STG}	-55 to 150	°C	

Part Number	$V_S @ 100KV/S$ V MAX	I_{S_LMT} mA	$V_T @ I_T$ V MAX	I_T A	$I_D @ V_D$ uA MAX	V_D V	$C_O @ 1MHz, 2V_{DC}$ pF TYP	I_H mA TYP
P3100TA	350	800	4	2.2	5	275	52	120

Typical Performance Characteristics (TA=25°C unless otherwise Specified)

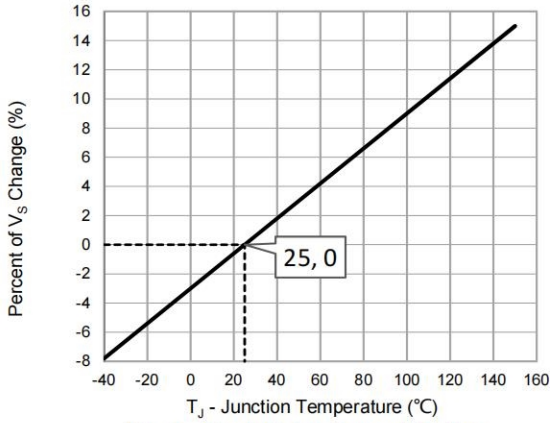


Fig. 1 - Peak Pulse Current Rating

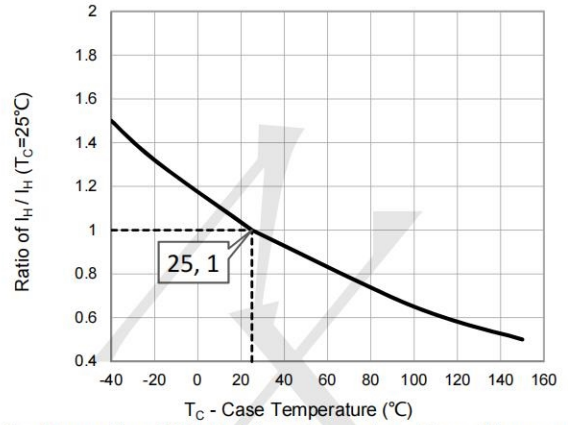


Fig. 2 - Normalized DC Holding Current vs. Case Temperature

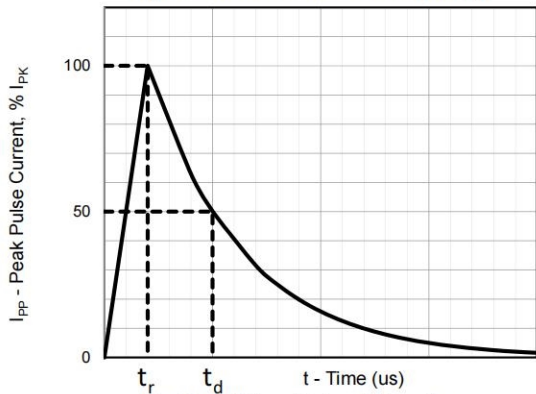


Fig. 3 - tr/td us Pulse Waveform

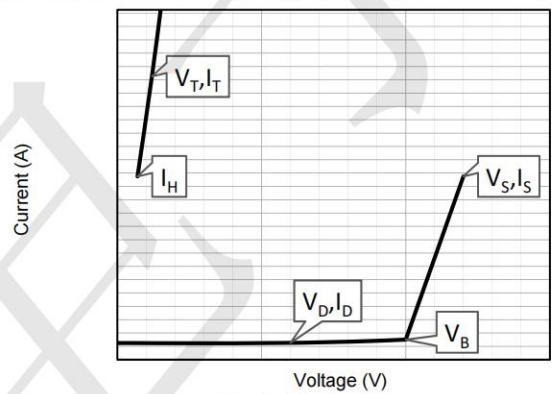


Fig. 4 - VI Curve

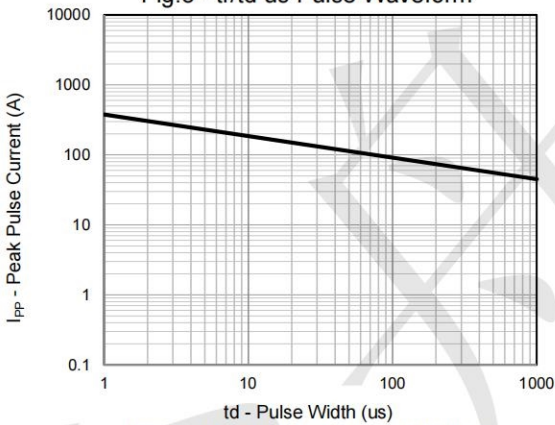


Fig. 5 - Peak Pulse Current Rating

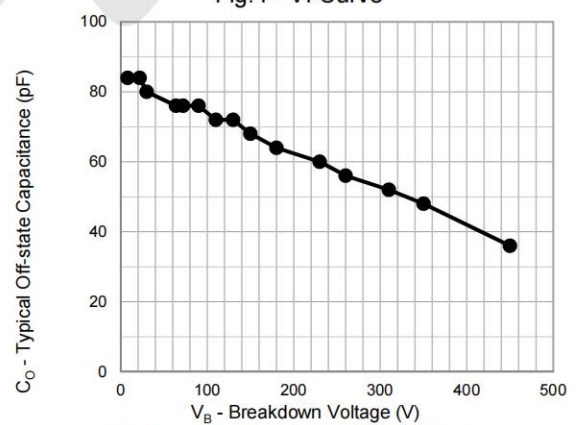
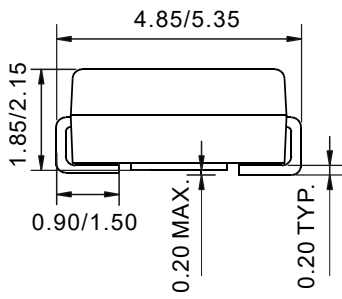
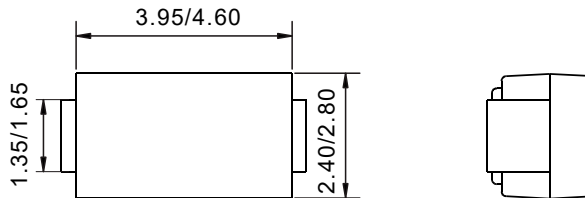


Fig. 6 - Typical Off-state Capacitance

Package Outline Dimensions: SMA(DO-214AC) (Unit: mm)



Mounting Pad Layout-SMA(DO-214AC) (Unit: mm)

