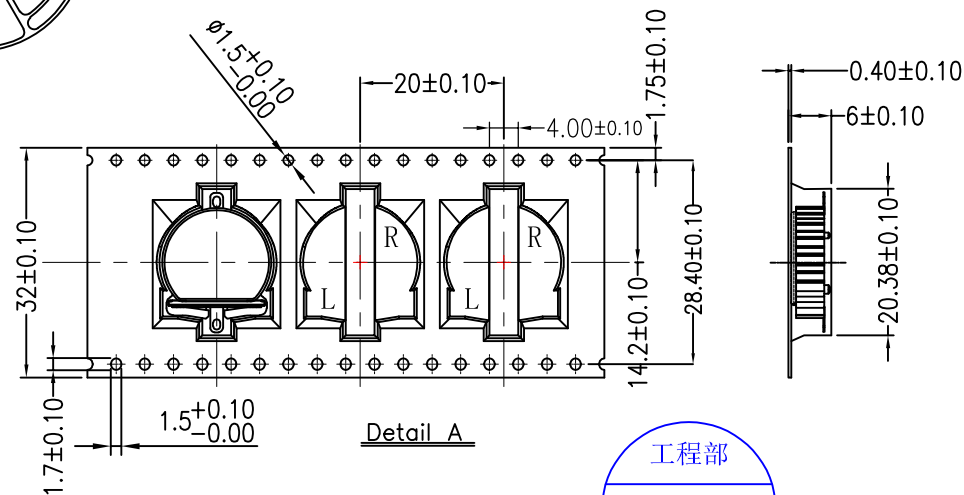
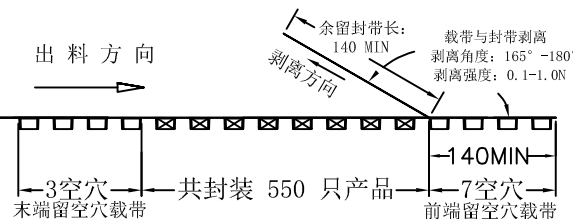
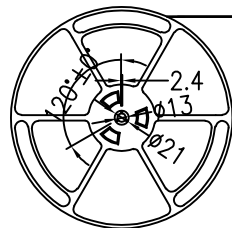
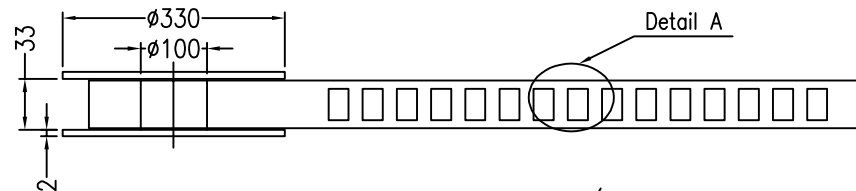
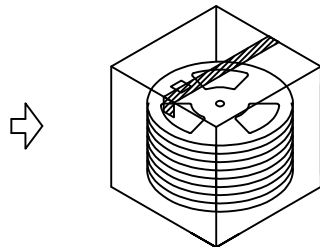
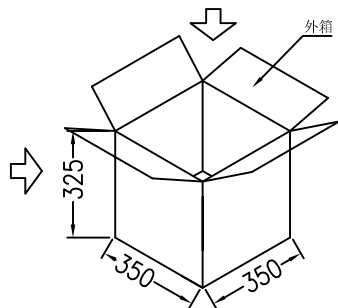
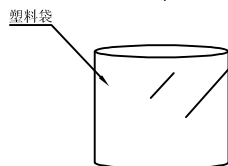
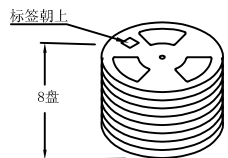
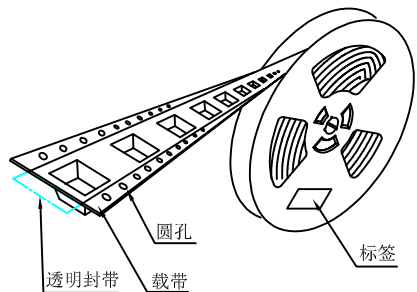


产品



技术要求:

1. 圆孔十个孔距离累计允许公差为±0.2mm
2. 带长250mm内容许弯曲度1mm
3. 材料厚度以在载带边缘测量为准
4. 所有尺寸定义依循EIA-481-C系准则定义之
5. 材料:黑色PS T=0.40mm
6. 所有卷轮为灰蓝挖空旋转塑胶卷轮
7. 整模成型长度:13.44M,
8. 非指明公差范围为: ±0.1mm;超过250mm不计算累计误差
9. 型腔外形凡未标明处倒角R为0.2-0.3; 拔模斜度未标注的为3° 以下

包装信息:

- 1、每卷盘装产品 550 只, 卷盘外侧贴相关标签;
- 2、每 8 卷盘放在一个塑料袋中;
- 3、每外箱装8盘, 产品总数: 4400 只;
- 4、外箱上下用胶纸封成“工”字;

UNLESS OTHERWISE SPECIFIED TOLERANCES		<b>MYOUNG 美阳</b> www.meiyangdz.com			
DECIMALS: X :±*** X.X :±*** X.XX :±*** X.XXX :±***	ANGLES: X :±*** X.X :±***	DSND	YangFeng	DATE	2022-07-12
		CHKD	ZhouRuicai	DATE	2022-07-12
		APVD	XueShun Yong	DATE	2022-07-12
WEIGHT:		SCALE:	SIZE: A4	VIEW:	BS-12-B3AA020-R
SHEET 1 OF 1		UNIT: mm	REV.: A/0	OBJECT: MY	DRAW NO.:MY-BD-0000
		TITLE:		BS-1220-2K PPS带盖 卷装	
		PART NO.:		BS-12-B3AA020-R	