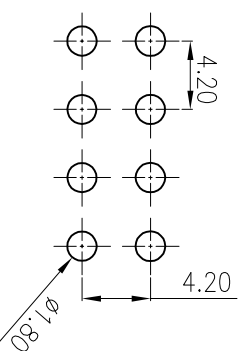


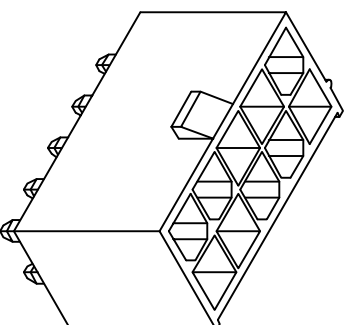
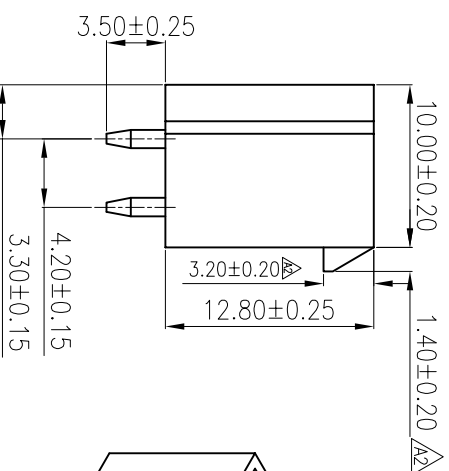
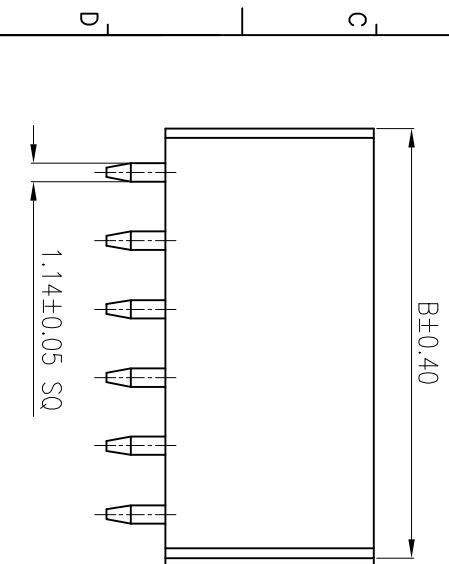
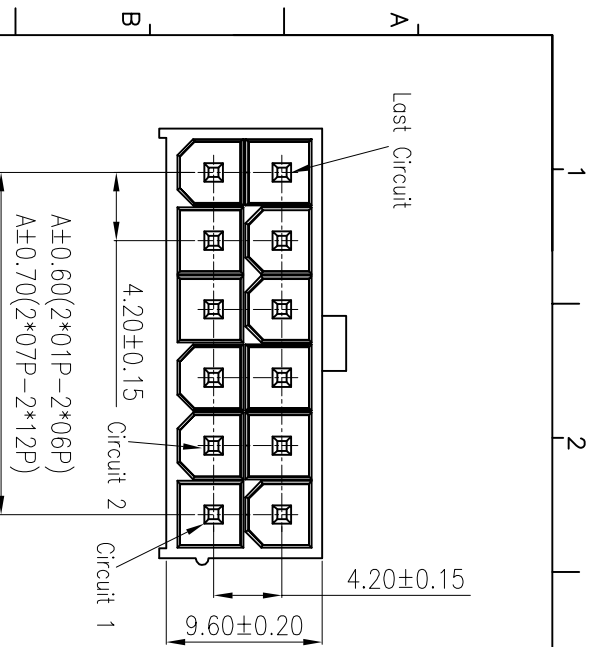
REV	LOOKS	DESCRIPTION	DRAWN	DATE
A0	NEW	PERLIMINARY	Long	2018.08.27
A1		UPDATED	LUU	2019.06.17
A2	Δ	UPDATED	LUU	2019.08.28

SPECIFICATIONS

Current Rating: 9A AC,DC
Voltage Rating: 800V AC,DC
Temperature Range: -25°C ~ +85°C
Contact Resistance: 10mΩ Max.
Insulation Resistance: 1000MΩ Min.
Withstanding Voltage: 1500V AC/minute
Pin Material: Brass/Tin-plated
Material: Nylon 66, UL94V-0
Color: Natural(Translucent)



RECOMMENDED PCB LAYOUT
TOLERANCE: ±0.05



Circuits	Part No.	Dimension(mm)
		A B
24	PA2412420130-127DMD	46.20 52.20
22	PA2212420130-127DMD	42.00 47.80
20	PA2012420130-127DMD	37.80 43.50
18	PA1812420130-127DMD	33.60 39.40
16	PA1612420130-127DMD	29.40 35.20
14	PA1412420130-127DMD	25.20 31.00
12	PA1212420130-127DMD	21.00 26.75
10	PA1012420130-127DMD	16.80 22.45
8	PA0812420130-127DMD	12.60 18.20
6	PA0612420130-127DMD	8.40 14.00
4	PA0412420130-127DMD	4.20 9.80
2	PA0212420130-127DMD	/ 5.60

Ordering Information

P:Pin Header Series
A:Finished Product
No.of PINS:
Plating Number:
420Pitch 4.20mm
130:Height 13.0mm

P A XX 12 420 130-127 D M D

S:SMT TYPE
D:DIP TYPE
M:Male(排针)
F:Female(排母)
S:Single(单排)
D:Double(双排)
Running number



Dongguan D-CHAIN Precision Components Co.,Ltd

MEASURE POINT:
QUADRANT POINT
TANGENCY POINT
INTERSECTION POINT

UNLESS OTHERWISE SPECIFIED, TOLERANCE:
X ±0.25
XX ±0.20
XXX ±0.15
ANGULAR ±5

DRAWN	LUU	DATE	2019.06.17	TITLE:
CHECKED		DATE		PITCH4.20mm H13.0mm DIP TYPE
APPROVED		DATE		
PART No.	PA0012420130-127DMD	REV:	A2	SCALE:
DRAWING No.		SIZE:	A4	SHEET:
				1/1

