

Technical requirement

技术要求

Service conditions: - 40 °C ~ 55 °C

使用条件:-40°C~55°C

Rated load: DC 30V 0.5A

额定负荷:DC 30V 0.5A

Contact resistance: ≤ 0.03 Ω

接触电阻:≤0.03Ω

Insulation resistance: ≥ 100m Ω dc250v

绝缘电阻:≥100MΩ DC250V

Withstand voltage: AC 500V (50Hz) / min

耐压:AC 500V(50Hz)/min

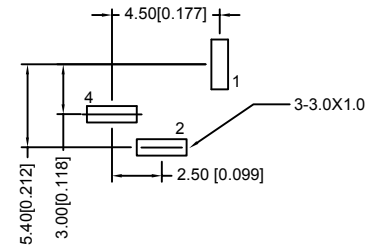
Plugging force: 3 ~ 20n

插拔力:3~20N

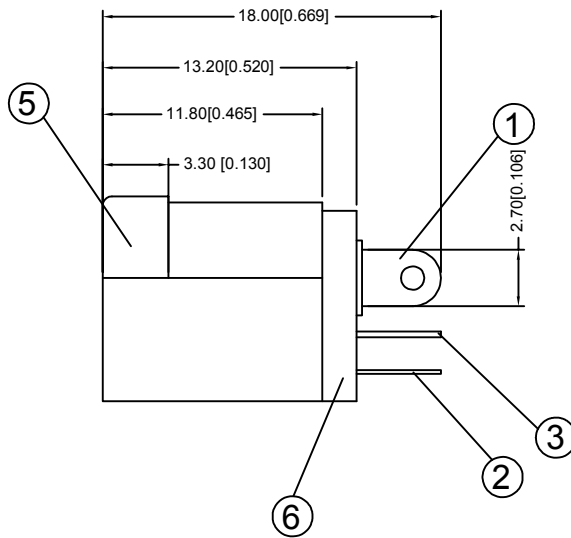
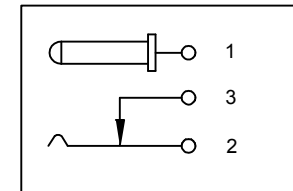
Mechanical life: 5000 times


机械寿命:5000次

线路板按照尺寸示意图



电路结构示意图



6	Cover plate	1PCS	PA 66	BLACK	—		new		2015/5/3	A		
5	Pedestal	1PCS	PA 66 (BLACK)		ECN BO.		DESCRIPTION.		DATE.	REV.		
4	Pin	1PCS	Brass	NI	DESIGNED	CHECKED	APPROVAL	DRAWING NUMBER	SCALT: 1/2		SCALE: 3:1	
3	Static contact piece	1PCS	Brass	SN	Mikey	Tom	Jerry	PART NAME	DC-012-2.5	UNLESS OTHERWISE SPECIFIED,TOLERANCE:		X. ±0.25
2	Moving contact piece	1PCS	Spcc	SN				MODEL NAME	DC-012-2.5			X.x ±0.20
1	Pin pin	1PCS	Brass	SN				3RD ANGLE PROJ	HANYONES TECH CO.,LTD	ANGULAR	X.xx ±0.15	±3'
ITEM	NAME	PCS	Material Science	Remarks					FILE. NO.			