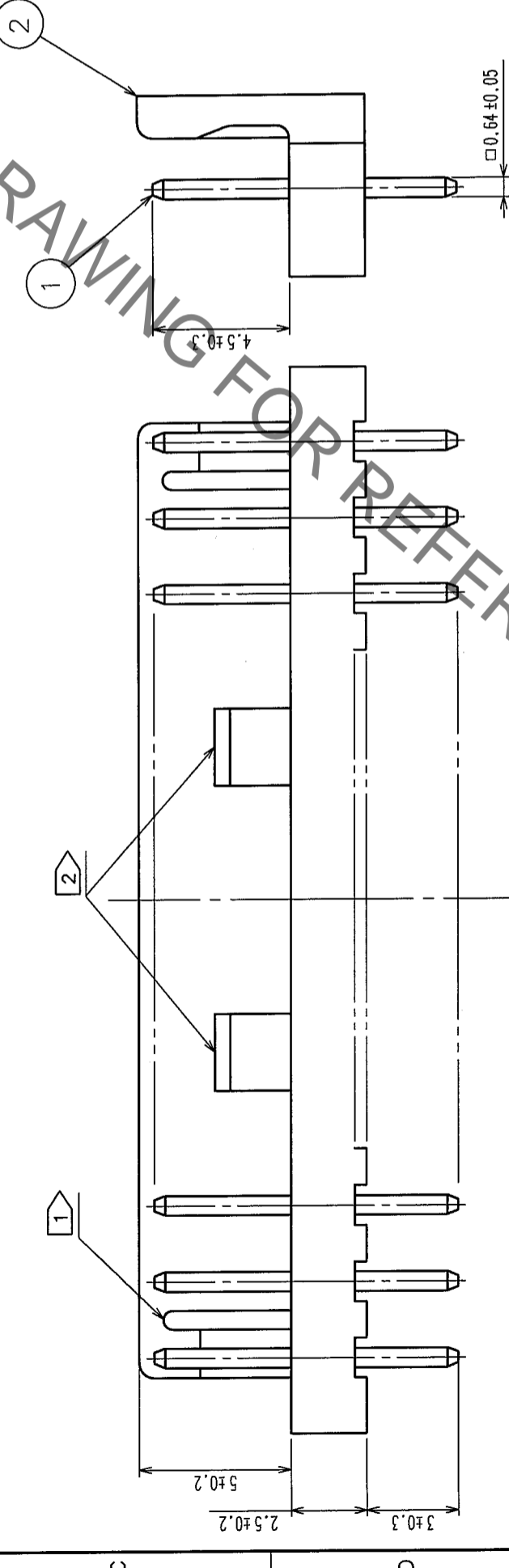
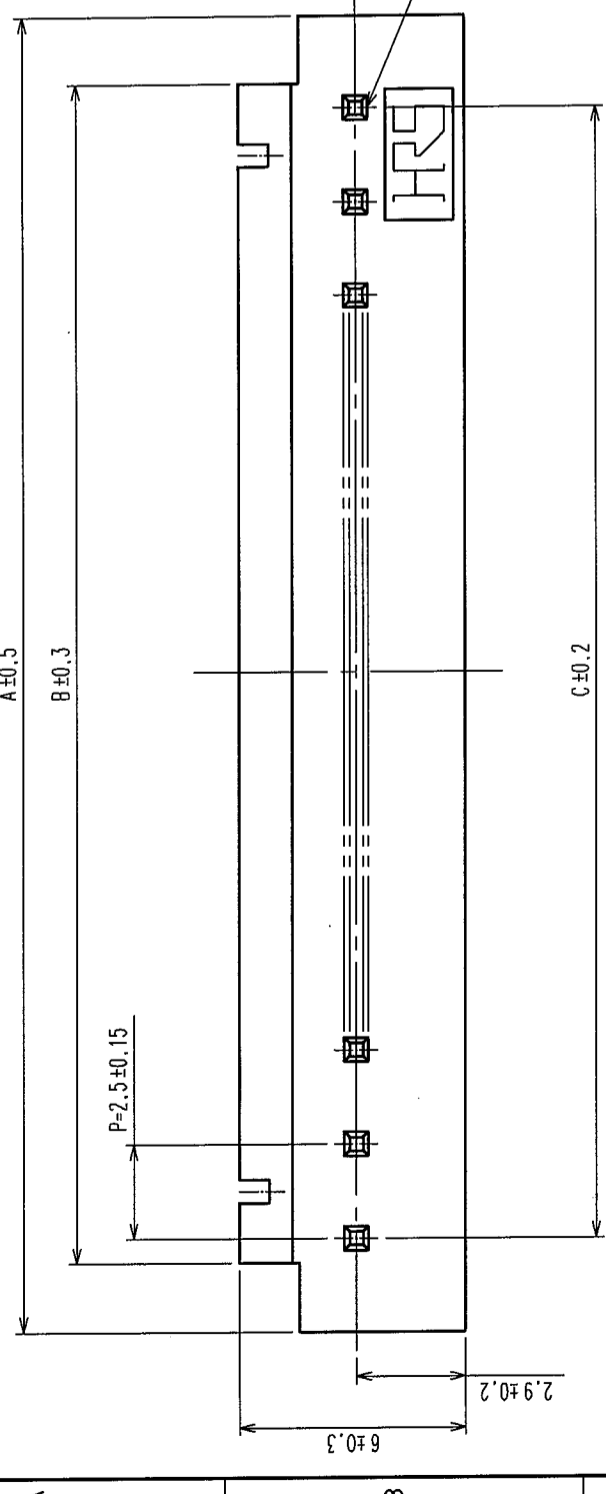


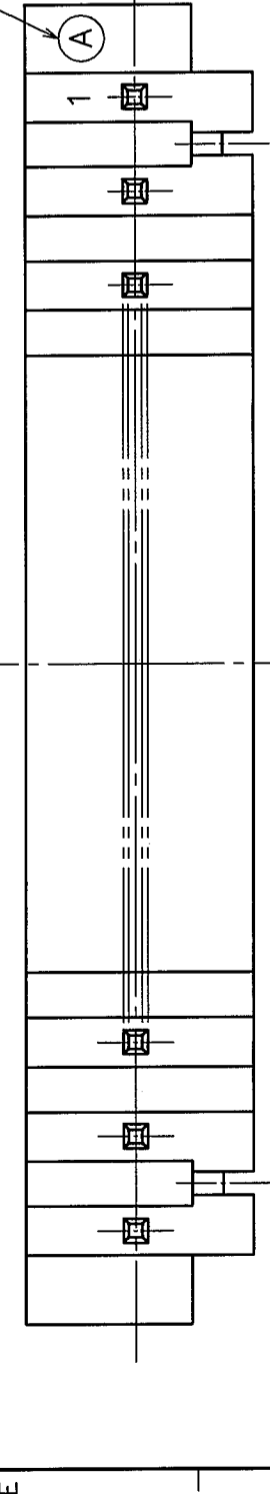
Jun.1.2023 Copyright 2023 HIROSE ELECTRIC CO., LTD. All Rights Reserved.  
 In case of consideration for using Automotive equipment / device which demand high reliability, kindly contact our sales window correspondents.

1	2	3	4	5	6	7	8		
COUNT	DESCRIPTION OF REVISIONS	BY	CHKD	DATE	COUNT	DESCRIPTION OF REVISIONS	BY	CHKD	DATE



NOTES: 1: 2 POSITION TO BE SLOTTED AT CENTER FOR ONE LOCATION OTHER POSITIONS TO BE 2 LOCATIONS AS SHOWN IN FIGURE.  
 2: IN THE CASE OF 2 TO 6 CONTACTS, THERE IS NO MIS-INSERTION DEPRESSION. FOR 7 TO 12 CONTACTS, ONE MIS-INSERTION DEPRESSION. FOR OTHERS, 2 MIS-INSERTION DEPRESSION AS SHOWN IN A FIGURE.

PART NO.	CODE NO.	NUMBER OF CONTACTS	A	B	C
DF1-2P-2.5DSA(05)	541-0001-0-05	2	7.5	3.8	2.5
DF1-3P-2.5DSA(05)	541-0002-2-05	3	10.0	6.3	5.0
DF1-4P-2.5DSA(05)	541-0003-5-05	4	12.5	8.8	7.5
DF1-5P-2.5DSA(05)	541-0004-8-05	5	15.0	11.3	10.0
DF1-6P-2.5DSA(05)	541-0005-0-05	6	17.5	13.8	12.5
DF1-7P-2.5DSA(05)	541-0006-3-05	7	20.0	16.3	15.0
DF1-8P-2.5DSA(05)	541-0007-6-05	8	22.5	18.8	17.5
DF1-9P-2.5DSA(05)	541-0008-9-05	9	25.0	21.3	20.0
DF1-10P-2.5DSA(05)	541-0009-1-05	10	27.5	23.8	22.5
DF1-11P-2.5DSA(05)	541-0010-0-05	11	30.0	26.3	25.0
DF1-12P-2.5DSA(05)	541-0011-3-05	12	32.5	28.8	27.5
DF1-13P-2.5DSA(05)	541-0012-6-05	13	35.0	31.3	30.0
DF1-14P-2.5DSA(05)	541-0013-9-05	14	37.5	33.8	32.5
DF1-15P-2.5DSA(05)	541-0014-1-05	15	40.0	36.3	35.0
DF1-16P-2.5DSA(05)	541-0015-4-05	16	42.5	38.8	37.5
DF1-18P-2.5DSA(05)	541-0017-0-05	18	47.5	43.8	42.5
DF1-20P-2.5DSA(05)	541-0019-5-05	20	52.5	48.8	47.5



1	BRASS	SURFACE: TIN PLATED 1μm min UNDER PLATING: NICKEL 0.5μm min	2	POLYAMIDE	PALE BROWN, UL94V-0
NO.	MATERIAL	FINISH, REMARKS	NO.	MATERIAL	FINISH, REMARKS
CODE NO. (OLD)	CL		DRAWN	DESIGNED	CHECKED
			M. Nakamoto	H. Umehara	J. Oka
			'04.04.16	'04.04.16	'04.04.16
DRAWING NO. EDC3-162342-10		PART NO. DF1-*P-2.5DSA(05)		APPROVED J. Oka	
SCALE 5 : 1	UNITS mm	CODE NO. CL541-		APPROVED J. Oka	
				RELEASED	