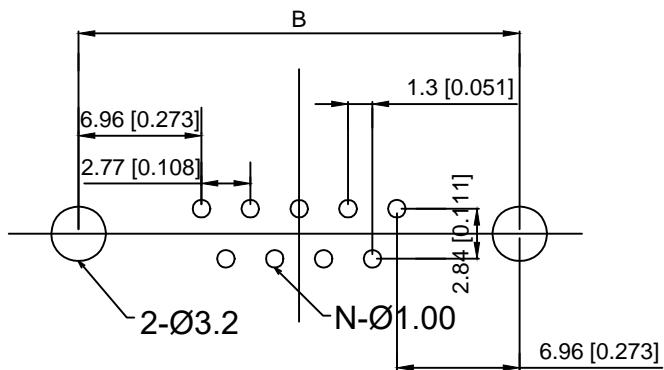
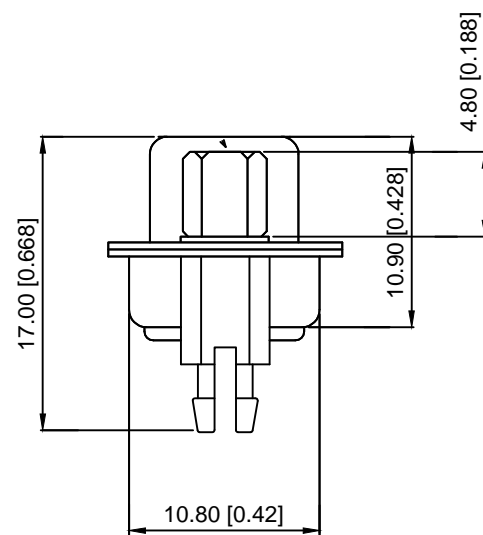


Specifications:
 规格:
 Current rating:5A AC/DC
 额定电流: 5A AC/DC
 Withstanding voltage:500V AC/MAX
 耐受电压: ≤500V AC/分钟
 Temperature range:-25℃~+85℃
 温度范围: -55℃~+85℃
 Insulation resistance:1000MΩMIN
 绝缘电阻: ≥1000MΩ
 Contact resistance:30mΩMAN
 接触电阻: ≤30mΩ
 Material:
 材料:
 Contacts:Brass C2680
 接触: 黄铜 C2680
 Insulator:PBT+G.F
 绝缘体: PBT+G.F
 SHELL:SPCC
 外壳: 铁



PCB LAYOUT



X02 XX F X X X 5
 ① ② ③ ④ ⑤ ⑥ ⑦

- ① Series NO.
- ② Row No.Pin No.XX-09;15;25;37
- ③ Welding Board Angle :F-Fmale
- ④ T: Tradutional C: Car-pin
- ⑤ Planting Category: 1:1U 2:2U 3:3U 4:5U 5:15U 6:30U 7:AuSn
- ⑥ B:BLACK W:White BL:Blue Y:Yellow G:Green R:Red
- ⑦ 5:Front lock screw after riveting

NO.POS	A±0.38	B±0.13	C±0.20	D±0.38
9PIN	30.80	24.99	16.33	19.28
15PIN	39.20	33.32	24.66	27.65
25PIN	53.10	47.04	38.35	41.20
37PIN	69.40	63.50	54.80	57.44

MARK	DESCRIPTION	DATE	REVISED	APPROVED	UNSPECIFIED TOLERANCES	DSND	DATE	SCALE: N/A	MODEL TYPE:
Δx					units: mm	DWN	DATE	VIEW:	PART NO.:
Δx					tolerance: X.X ±0.2mm	CHKD	DATE	UNIT: mm/in	DWG NO.:
Δx					X.XX ±0.1mm	APPD	DATE	SIZE: A4	X02XXFXXX5
					X.XXX ±0.05mm	XKB INDUSTRIAL PRECISION CO.,LIMITED			WEIGHT
REVISIONS									1.0g
www.xk-dg.cn www.helloxkb.com www.helloxkb.cn									SHEET
									1/1
									REVISION
									A0