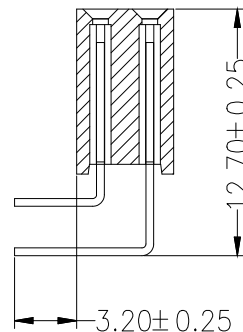
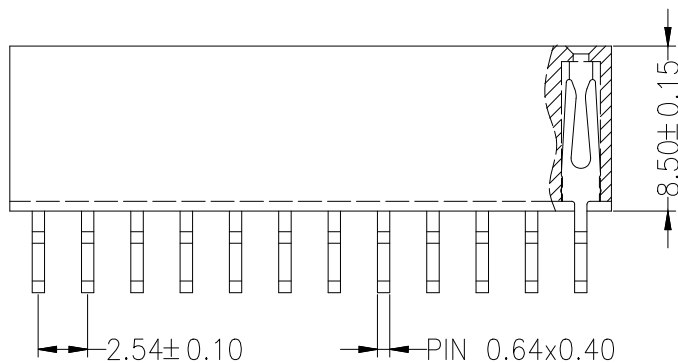
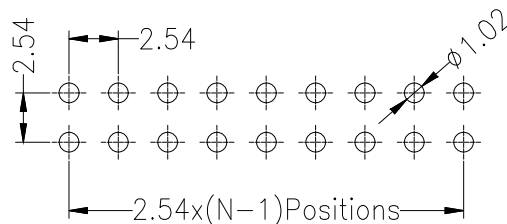
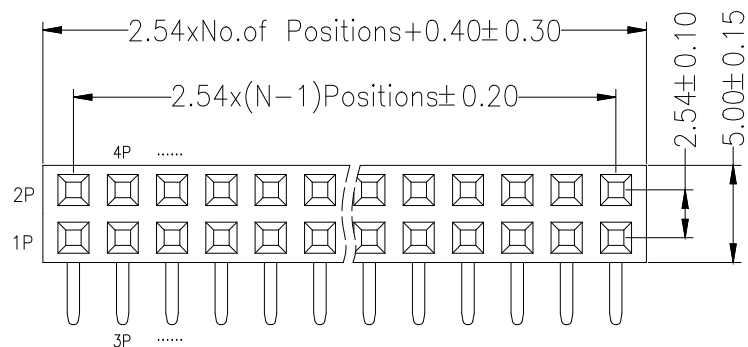


Recommended P.C.B Layout(Top Side)
(PCB BOARD TOLERANCE±0.05)

SPECIFICATIONS
 Rated Current:3.0AMP
 Contact Resistance:20mΩ Max
 Withstand Voltage:1000V AC/DC
 Insulation Resistance:1000MΩ Min
 Operation Temperature:-40°C to +105°C

Contact Material:Copper Alloy
 Contact Plating:Au or Sn Over Ni
 Insulator Material:Polyester(UL94V-0)
 Standard: PA6T
 Max.Processing Temp: 260°C±5°C 5S



Ordering Information

PM 254 - * - N - W - * - **

No.of Rows	No.of Pins	Type	Length (Plastic)	Contact Plating
1=Single Row	2=40Pin	2=弯排 3=直排 4=插排	(塑高)	G0:Gold Flash
2=Dual Row				G1:1u" Gold
				G2:3u" Gold
				G3:5u" Gold
				G4:10u" Gold
				G5:15u" Gold
				G6:30u" Gold
				S0:Gold Flash/Tin
				S1:Tin

			GENERAL TOLERANCE		制图 DRAWING		深圳市华灿天禄电子有限公司 ShenzhenhuacantianluELECTRONICS CO.,LTD			
			DIM	TOL	审核 CHECK					
			X.X	±0.30	批准 APPROVAL		产品名称 TITLE	2.54双排 排母 正弯(塑高8.5)	版本 REV.	A
			X.XX	±0.20	比例 SCALE		产品料号 PART NO.	PM254-2-N-W-8.5-XX(L12.7)	单位 UNITS	mm
			X.XXX	±0.10	投影 Projection		材料 MATERIAL		页次 SHEET	1/1
序号 No.	变更内容 MODIFY CONTENT	日期 MODIFY DATE	Angle	±3.0°						