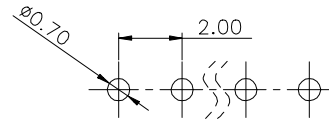
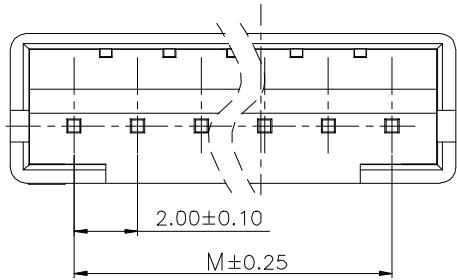


1 2 3 4 5 6 7 8 9

F

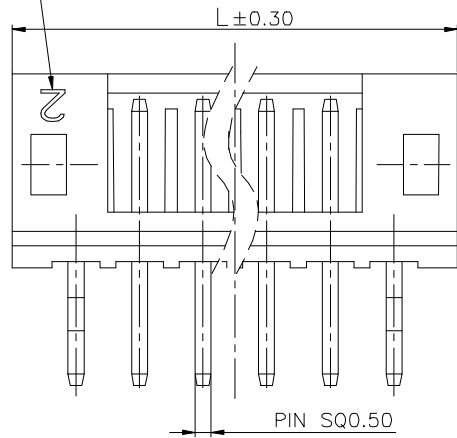


Recommended P.C.B Layout (Top Side)
P.C.B Thickness = 1.20mm
(Tolerance=±0.05)

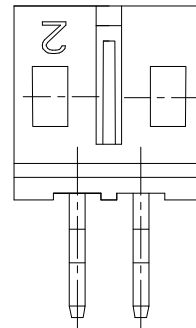
Specifications:
Current rating:2A AC/DC.
Voltage rating:100V AC/DC
Temperature range:-40°C~+105°C.
Contact resistance:30mΩ Max.
Insulation resistance:1000MΩ Min.
Withstanding voltage: 800V AC/minute.
Materials
Contact Material:Brass
Insulator Material:PA66 UL 94V-0
All materials must meet GREENCONN hazardous substances control standards.

E

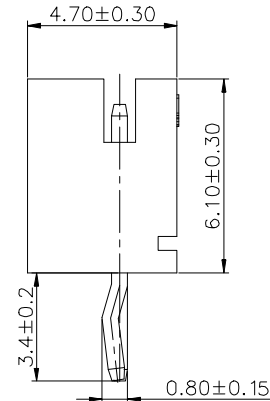
模穴號1. 2. 3...



2PIN 以上圖示



2PIN 圖示



No. of PIN/ROW	Dimensions	
	M	L
02	2.00	6.00
03	4.00	8.00
04	6.00	10.00
05	8.00	12.00
06	10.00	14.00
07	12.00	16.00
08	14.00	18.00
09	16.00	20.00
10	18.00	22.00
11	20.00	24.00
12	22.00	26.00
13	24.00	28.00
14	26.00	30.00
15	28.00	32.00
16	30.00	34.00

D

C

B

Ordering Information

G WFA117 - XX XX A 800 E X W X

No. of Pins per Row 02~16 Standard Plating 01=Tin Selective Plating 02=Gold Flash 22=Matte Tin Color 1=Black 2=White Standard Packing N=PE Bag

A



REV. 01 UNIT. mm SCALE. 1:1

3RD.ANG PROJ.
PAGE. 1/1

GENERAL TOLERANCE	
X: ±5.0'	X: ±/
.X: ±3.0'	.X: ±0.25
.XX: ±2.0'	.XX: ±0.20
.XXX: ±/	.XXX: ±0.15

DESIGNED:
CHECKED:
APPROVED:

DATE:
DATE:
DATE:

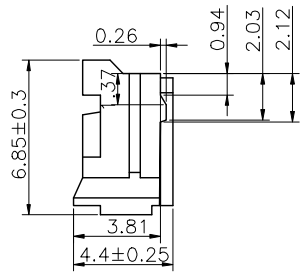
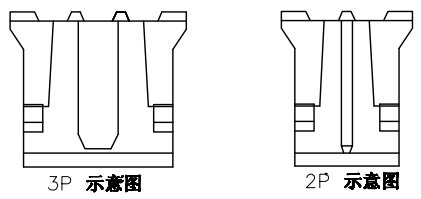
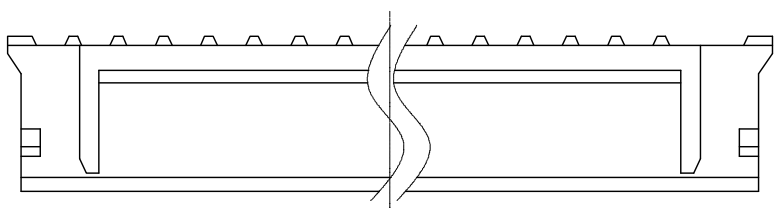
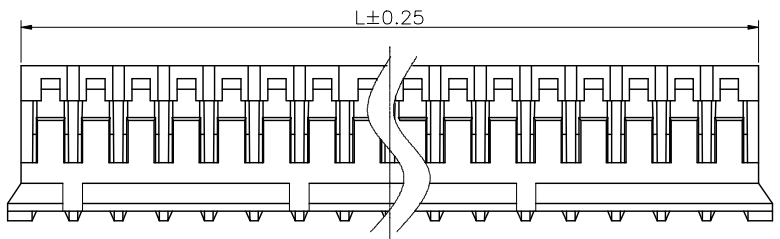
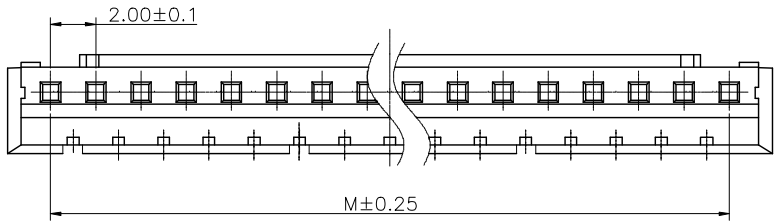
DWG. NO. GWFA117-CA800
PART NO. GWFA117-XXXXA800EXWX

TITLE. PITCH 2.0mm 180' WAFER

1 2 3 4 5 6 7 8 9

1 2 3 4 5 6 7 8 9

F
E
D
C
B
A



Specifications
 Voltage rating:100V AC/DC
 Current Rating:2A AC/DC
 Withstanding Voltage:800V AC
 Insulation Resistance:1000MΩ Min.
 Contact Resistance:20mΩ Max.
 After environmental testing: ≤20mΩ
 Operating Temperature:-25°C to +85°C
 Materials
 Insulator Material:PA66 94V-0
 All materials must meet GREENCONN hazardous substances control standards.

Pins	Dimensions(mm)	
	M	L
2	2.00	4.60
3	4.00	6.60
4	6.00	8.60
5	8.00	10.60
6	10.00	12.60
7	12.00	14.60
8	14.00	16.60
9	16.00	18.60
10	18.00	20.60
11	20.00	22.60
12	22.00	24.60
13	24.00	26.60
14	26.00	28.60
15	28.00	30.60
16	30.00	32.60

Ordering Information

GWF181 - XX A XX

No. of Pins Materials /Color
 02-16 M=YN66/White
 M1=YN66/Black

格稜股份有限公司
Greenconn Corporation

REV. A	UNIT. mm	SCALE. 1:1	PAGE. 1/1	
--------	----------	------------	-----------	--

GENERAL TOLERANCE	
X.±	X.±
.X'±2.0'	.X±0.30
.XX'±1.0'	.XX±0.20
.XXX'±	.XXX±0.10

DESIGNED:	DATE:
CHECKED:	DATE:
APPROVED:	DATE:

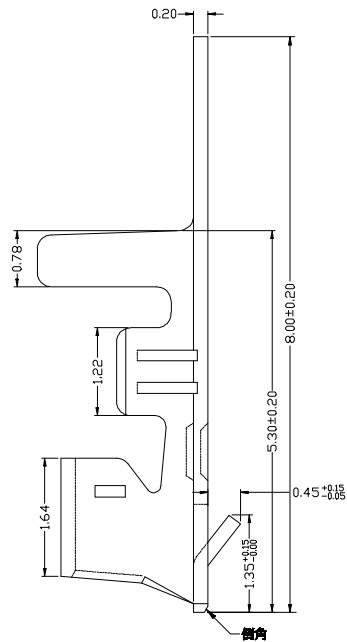
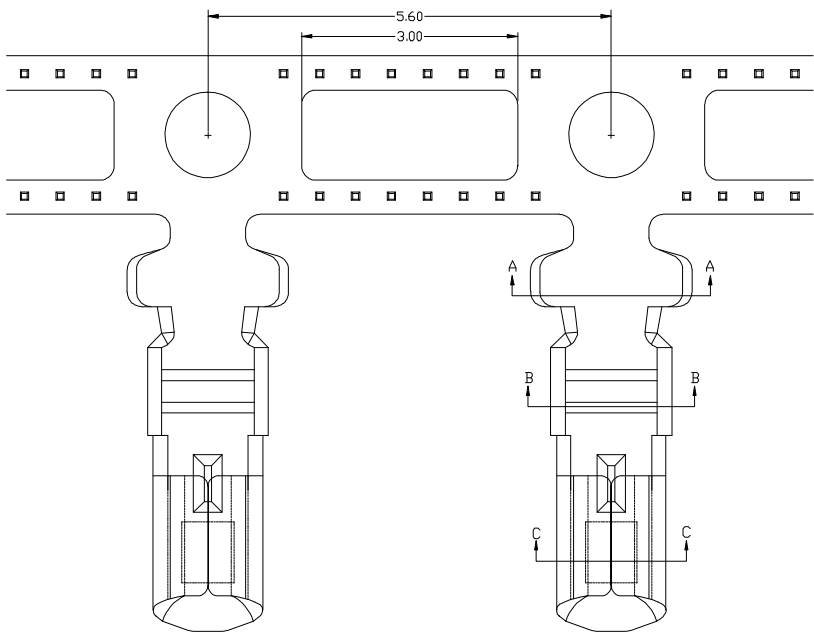
DWG. NO.	GWF181-HA
PART NO.	GWF181-XXAXX

TITLE.	Pitch 2.0 Housing
--------	-------------------

1 2 3 4 5 6 7 8 9

1 2 3 4 5 6 7 8 9

F

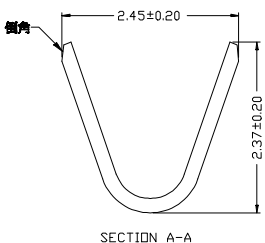


Materials
 Insulator Material: Phosphor Bronze
 Finish: Tin-plated
 wire range: AWG#24-32
 All materials must meet GREENCONN
 hazardous substances control standards.

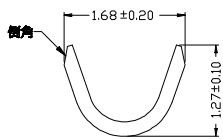
E

D

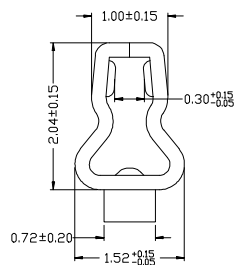
C



SECTION A-A



SECTION B-B



SECTION C-C

Ordering Information

GRF143 - 01 XX XX

Standard Plating
 01= Tin
 02= Gold Flash

Materials
 AB= Phosphor bronze

B

A

格稜股份有限公司
Greenconn Corporation

GENERAL TOLERANCE

X: ±	X. ± /
.X' ±	.X ± 0.40
.XX' ±	.XX ± 0.35
.XXX' ±	.XXX ± 0.15

DESIGNED:

DATE:

CHECKED:

DATE:

APPROVED:

DATE:

DWG. NO.

GRF143-T1

PART NO.

GRF143-01XXXX

TITLE.

Pitch 2.00mm Crimp Style
 Connectors

REV.
B

UNIT.
mm

SCALE.
1:1

PAGE.
1/1



1

2

3

4

5

6

7

8

9