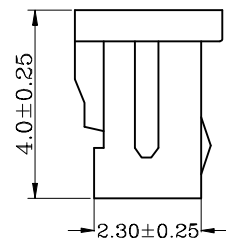
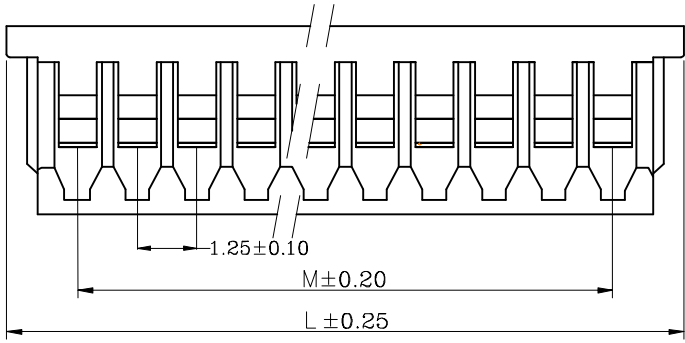
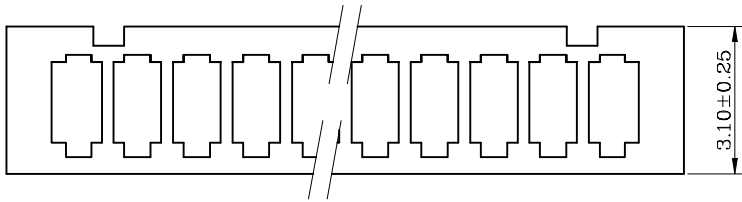


1 2 3 4 5 6 7 8 9

F
E
D
C
B
A



NOTES:
 CURRENT RATING:1A AC/DC.
 VOLTAGE RATING:125V AC/DC
 TEMPERATURE RANGE:-40°C~+105°C.
 CONTACT RESISTANCE:20MΩ Max.
 INSULATION RESISTANCE:100MΩ Min.
 WITHSTANDING VOLTAGE:500V AC/MINUTE.
 MATERIAL:NYLON 66.UL94V-0.

No of Pin/Row	Dimensions	
	M	L
02	1.25	4.25
03	2.50	5.50
04	3.75	6.75
05	5.00	8.00
06	6.25	9.25
07	7.50	10.50
08	8.75	11.75
09	10.00	13.00
10	11.25	14.25
11	12.50	15.50
12	13.75	16.75
13	15.00	18.00
14	16.25	19.25
15	17.50	20.50
16	18.75	21.75

GHD321 - XX A X
 No. of Pin/Row 02 ~ 16
 Material/Color M=Nylon66/White

 Website: www.greenconn.com E-mail: sales@greenconn.com	3RD.ANG PROJ. 	GENERAL TOLERANCE		DESIGNED:	DATE:	DWG. NO. GHD321-HA	TITLE. 1.25mm pitch housing
		X: ±5.0'	X: ±				
REV. A	UNIT. mm	SCALE. 1:1	PAGE. 1/1	APPROVED:	DATE:		
				.X' ±3.0'	.X ±0.30		
				.XX' ±2.0'	.XX ±0.25		
				.XXX' ±1.0'	.XXX ±0.15		

1 2 3 4 5 6 7 8 9