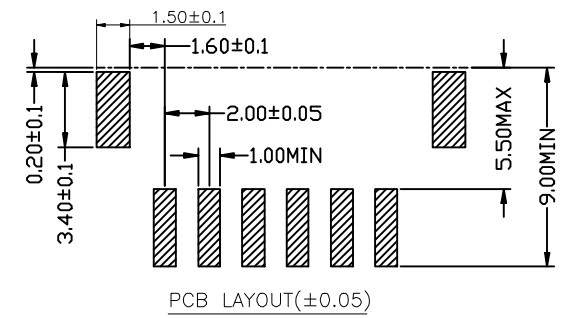
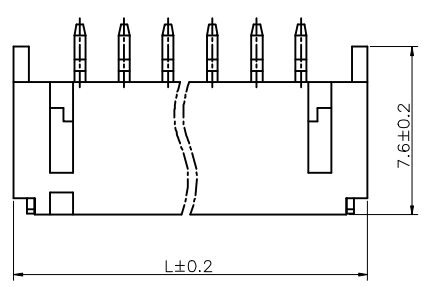
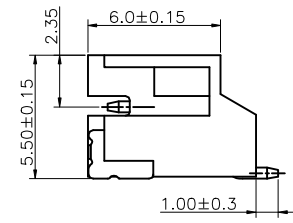
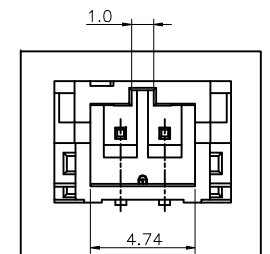
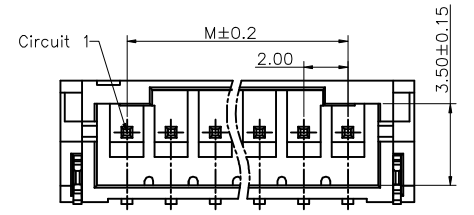


1 2 3 4 5 6 7 8 9

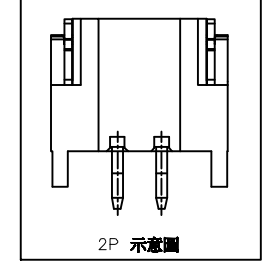
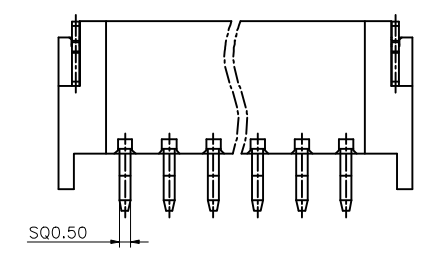
F
E
D
C
B
A



Specifications
 Current Rating:2Amp
 Voltage Rating:100V AC/DC
 Insulation Resistance:1000MΩ Min.
 Dielectric Withstanding Voltage:800VAC
 Contact Resistance:20mΩ Max.
 Operating Temperature:-40°C to +105°C
 Materials
 Contact Material:Brass
 Insulator Material:High Temperature Thermoplastic, UL 94V-0 PA6T(Nylon) or the equivalent material
 All materials must meet GREENCONN hazardous substances control standards.



CIRCUITS	DIM M	DIM L	CIRCUITS	DIM M	DIM L
02	2.00	8.00	10	18.00	24.00
03	4.00	10.00	11	20.00	26.00
04	6.00	12.00	12	22.00	28.00
05	8.00	14.00	13	24.00	30.00
06	10.00	16.00	14	26.00	32.00
07	12.00	18.00	15	28.00	34.00
08	14.00	20.00	16	30.00	36.00
09	16.00	22.00			



Ordering Information

G WFD101 - XX XX A 003 R X B X

No. of Pins per Row 02~16 Standard Plating 01=Tin Color 2=White Standard Packing D=Tape&Reel

Selective Plating 02=Gold Flash 22=Matte Tin

格菱股份有限公司
Greenconn Corporation

REV. 01	UNIT. mm	SCALE. 1:1	PAGE. 1/1	
---------	----------	------------	-----------	--

GENERAL TOLERANCE	
X:±	X.±
.X'±	.X±0.25
.XX'±	.XX±0.15
.XXX'±	.XXX±0.10

DESIGNED:	DATE:
CHECKED:	DATE:
APPROVED:	DATE:

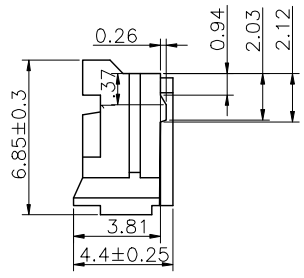
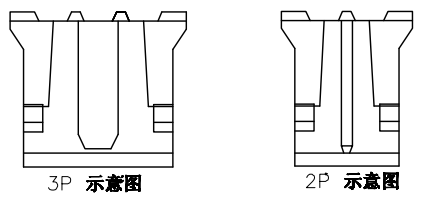
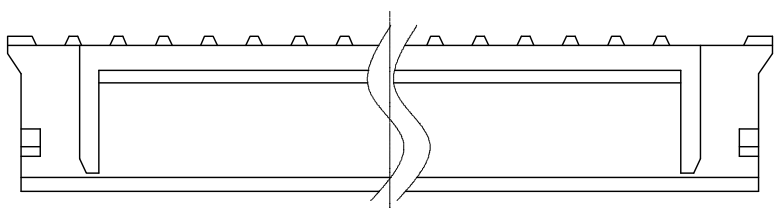
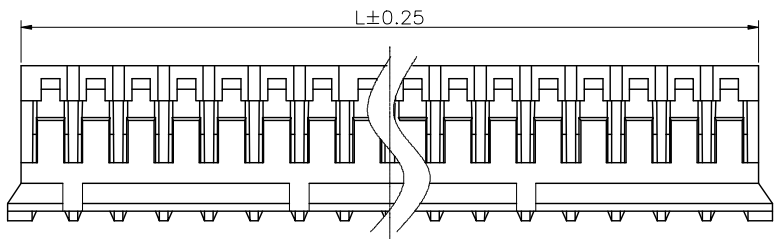
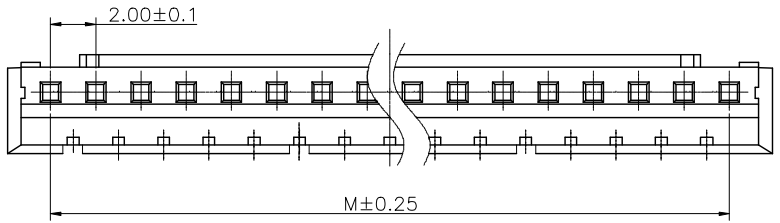
DWG. NO. GWFD101-CA3RB
PART NO. GWFD101-XXXXA003RXXB

TITLE. 2.0mm pitch 90° wafer

1 2 3 4 5 6 7 8 9

1 2 3 4 5 6 7 8 9

F
E
D
C
B
A



Specifications
 Voltage rating:100V AC/DC
 Current Rating:2A AC/DC
 Withstanding Voltage:800V AC
 Insulation Resistance:1000MΩ Min.
 Contact Resistance:20mΩ Max.
 After environmental testing: ≤20mΩ
 Operating Temperature:-25°C to +85°C
 Materials
 Insulator Material:PA66 94V-0
 All materials must meet GREENCONN hazardous substances control standards.

Pins	Dimensions(mm)	
	M	L
2	2.00	4.60
3	4.00	6.60
4	6.00	8.60
5	8.00	10.60
6	10.00	12.60
7	12.00	14.60
8	14.00	16.60
9	16.00	18.60
10	18.00	20.60
11	20.00	22.60
12	22.00	24.60
13	24.00	26.60
14	26.00	28.60
15	28.00	30.60
16	30.00	32.60

Ordering Information

GWF181 - XX A XX

No. of Pins Materials /Color
 02-16 M=YN66/White
 M1=YN66/Black

格稜股份有限公司
Greenconn Corporation

REV. A	UNIT. mm	SCALE. 1:1	PAGE. 1/1	
--------	----------	------------	-----------	--

GENERAL TOLERANCE	
X.±	X.±
.X'±2.0'	.X±0.30
.XX'±1.0'	.XX±0.20
.XXX'±	.XXX±0.10

DESIGNED:	DATE:
CHECKED:	DATE:
APPROVED:	DATE:

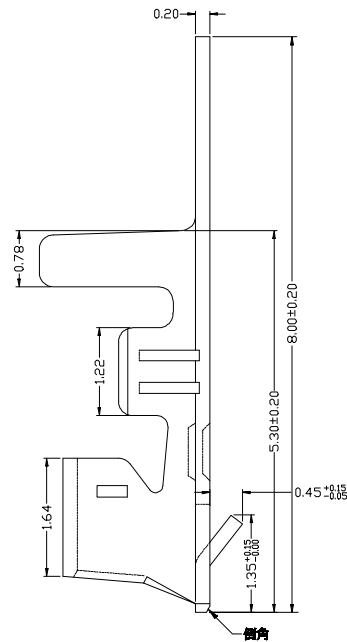
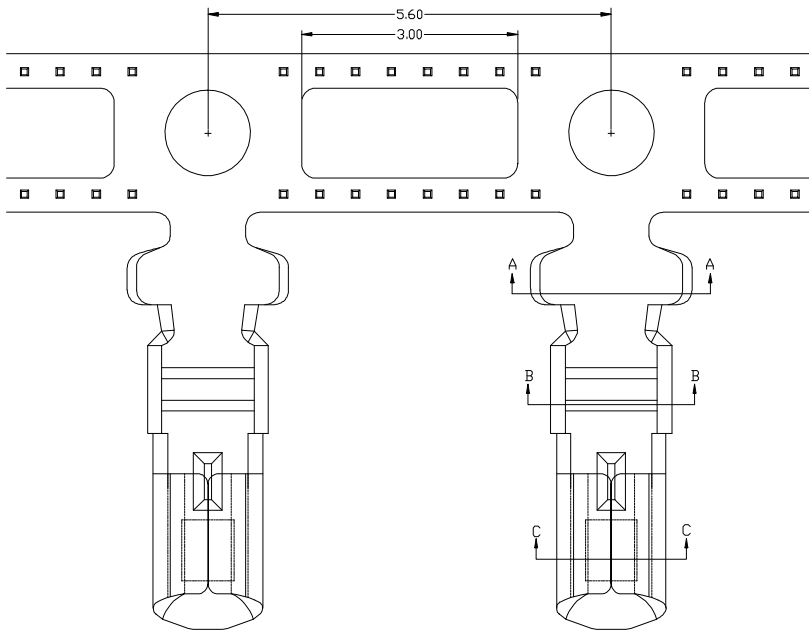
DWG. NO.	GWF181-HA
PART NO.	GWF181-XXAXX

TITLE.	Pitch 2.0 Housing
--------	-------------------

1 2 3 4 5 6 7 8 9

1 2 3 4 5 6 7 8 9

F

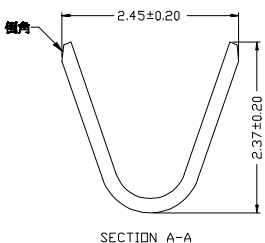


Materials
 Insulator Material: Phosphor Bronze
 Finish: Tin-plated
 wire range: AWG#24-32
 All materials must meet GREENCONN
 hazardous substances control standards.

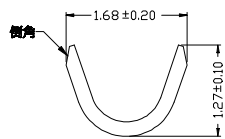
E

D

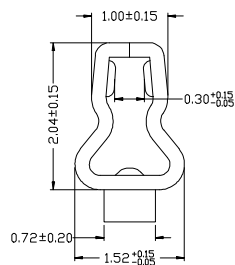
C



SECTION A-A



SECTION B-B



SECTION C-C

Ordering Information

GRF143 - 01 XX XX

Standard Plating
 01= Tin
 02= Gold Flash

Materials
 AB= Phosphor bronze

A

格稜股份有限公司
Greenconn Corporation

GENERAL TOLERANCE

X: ±	X, ±/
.X' ±	.X ±0.40
.XX' ±	.XX ±0.35
.XXX' ±	.XXX ±0.15

DESIGNED:

DATE:

CHECKED:

DATE:

APPROVED:

DATE:

DWG. NO.

GRF143-T1

PART NO.

GRF143-01XXXX

TITLE.

Pitch 2.00mm Crimp Style
 Connectors

REV.
B

UNIT.
mm

SCALE.
1:1

PAGE.
1/1



1

2

3

4

5

6

7

8

9