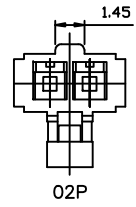
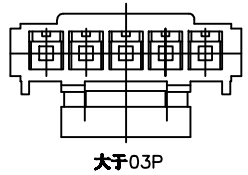
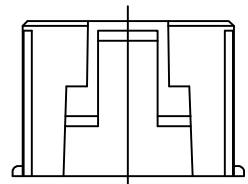
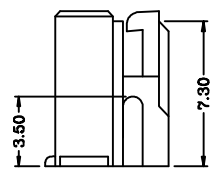
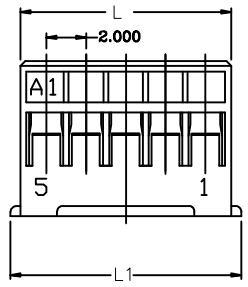
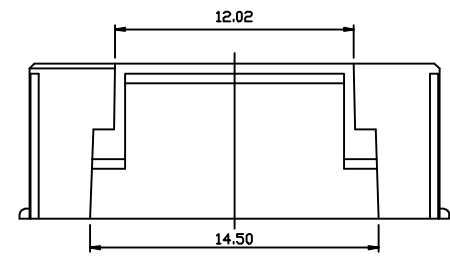
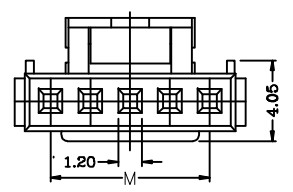


Specifications:
 Current rating: 3A AC/DC.
 Voltage rating: 250V AC/DC
 Temperature range: -40°C~+105°C.
 Contact resistance: 30mΩ Max.
 Insulation resistance: 1000MΩ Min.
 Withstanding voltage: 1000V AC/minute.
 Material: Nylon66 UL94V-0.



GHF571 - XX

**No. of Pin/Row
02 ~16**

A

X

**Material/Color
M=NYLON 66/White
NF=NYLON 66/Transparent**

No. of Pin	Dimensions		
	M	L	L1
02P	2.00	4.60	5.60
03P	4.00	6.60	7.60
04P	6.00	8.60	9.60
05P	8.00	10.60	11.60
06P	10.00	12.60	13.60
07P	12.00	14.60	15.60
08P	14.00	16.60	17.60
09P	16.00	18.60	19.60
10P	18.00	20.60	21.60
11P	20.00	22.60	23.60
12P	22.00	24.60	25.60
13P	24.00	26.60	27.60
14P	26.00	28.60	29.60
15P	28.00	30.60	31.60
16P	30.00	32.60	33.60



REV. A UNIT. mm SCALE. 1:1 PAGE. 1/1

GENERAL TOLERANCE	
X: ±/	X.± /
.X' ±/	.X± 0.25
.XX' ±/	.XX± 0.15
.XXX' ±/	.XXX± 0.10

DESIGNED:	DATE:
CHECKED:	DATE:
APPROVED:	DATE:

DWG. NO. GHF571-HA
 PART NO. GHF571-XXAX

TITLE. 2.00mm pitch housing