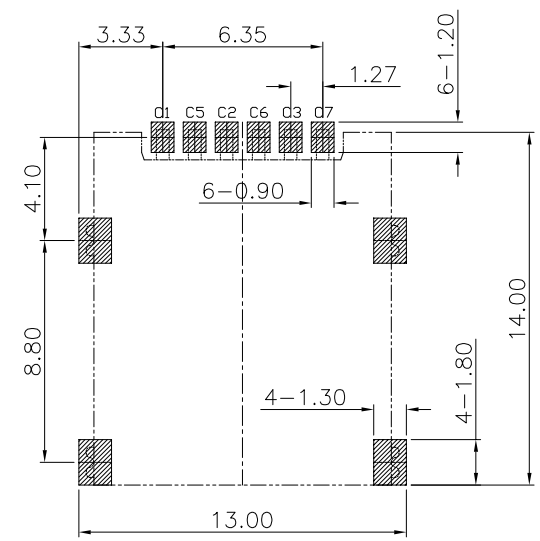
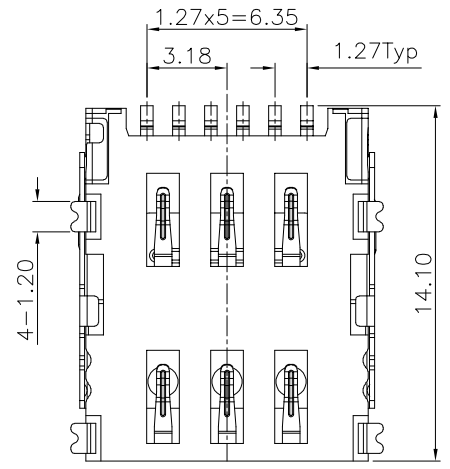
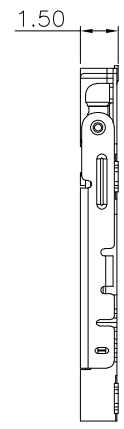
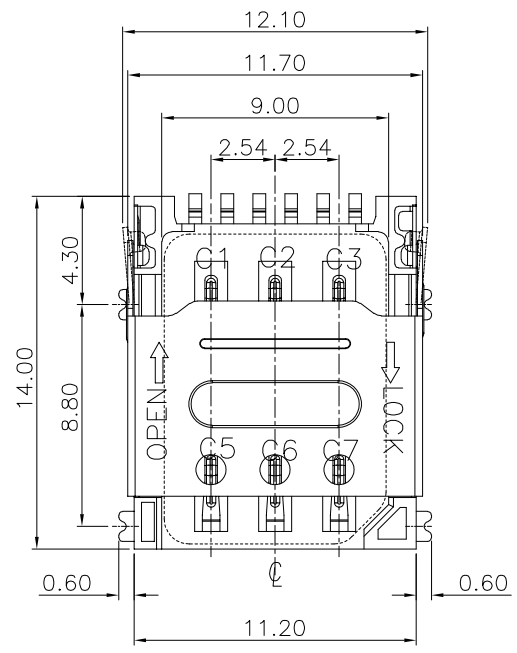
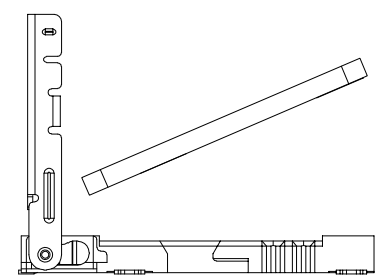
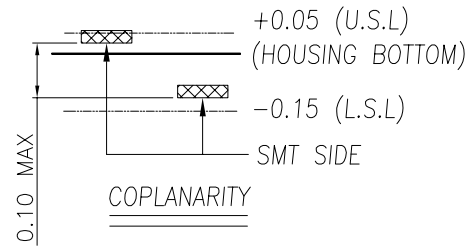


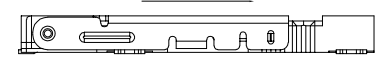
| Rev No. | Description of Revision | Date | Name | Approved | ECN No. |
|---------|-------------------------|------|------|----------|---------|
| ▲X      |                         |      |      |          |         |



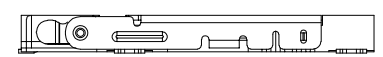
RECOMMENDED PCB LAYOUT  
GENERAL TOLERANCE ±0.05



STEP 1 INSERT Micro-SIM CARD

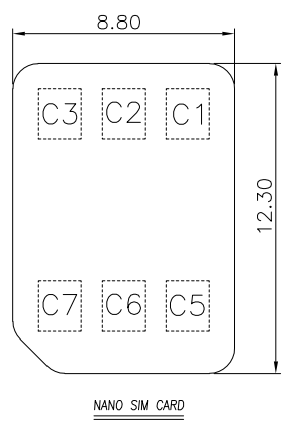


STEP 2 PUSH THE SHELL



STEP 3 FINISH

| SIM CARD |      |
|----------|------|
| Pin No.  | NAME |
| C1       | VCC  |
| C2       | RST  |
| C3       | CLK  |
| C5       | GND  |
| C6       | VPP  |
| C7       | I/O  |



NANO SIM CARD

NOTES:

- ELECTRICAL CHARACTERISTICS
  - CONTACT RESISTANCE: 60 Milliohms Max
  - INSULATION RESISTANCE: 1,000 Megohms Min.
  - VOLTAGE RATING: 50V.
  - CURRENT RATING: 1.0A.
- MECHANICAL CHARACTERISTICS
  - OPERATION TEMPERATURE RANGE: -20°C~+85°C
  - DURABILITY: 5000 CYCLES
- MATERIAL:
  - HOUSING: THERMOPLASTIC,UL 94-V0
  - TERMINAL: PHOSPHOR BRONZE,T=0.15
  - SHELL: STAINLESS STEEL,T=0.20
- FINISHED:
  - TERMINAL: Ni PLATED UNDER, 3U" Au MIN PLATED ON CONTACT AREA,AU PLATED ON SOLDER TAIL

|                                       |             |                        |             |                |        |
|---------------------------------------|-------------|------------------------|-------------|----------------|--------|
| UNLESS OTHERWISE SPECIFIED TOLERANCES |             |                        |             |                |        |
|                                       |             | TITLE: 翻盖式 NanoSIM卡 卡座 |             |                |        |
| DECIMALS:                             | ANGLES      | Drawn.                 | PART NO     | ZX-NSIM-281.4J |        |
| X. ±0.20                              | X°. ±2°     | Checked.               | SCALE: 3:10 | UNIT: mm       | PROJ.  |
| X.X ±0.15                             | X.X° ±1°    | Approved.              | SIZE: A4    | SHEET: 1 OF 1  | REV. A |
| X.XX ±0.10                            | X.XX° ±0.5° |                        |             |                |        |
| X.XXX ±0.05                           |             | CUSTOMER COPY          |             |                |        |