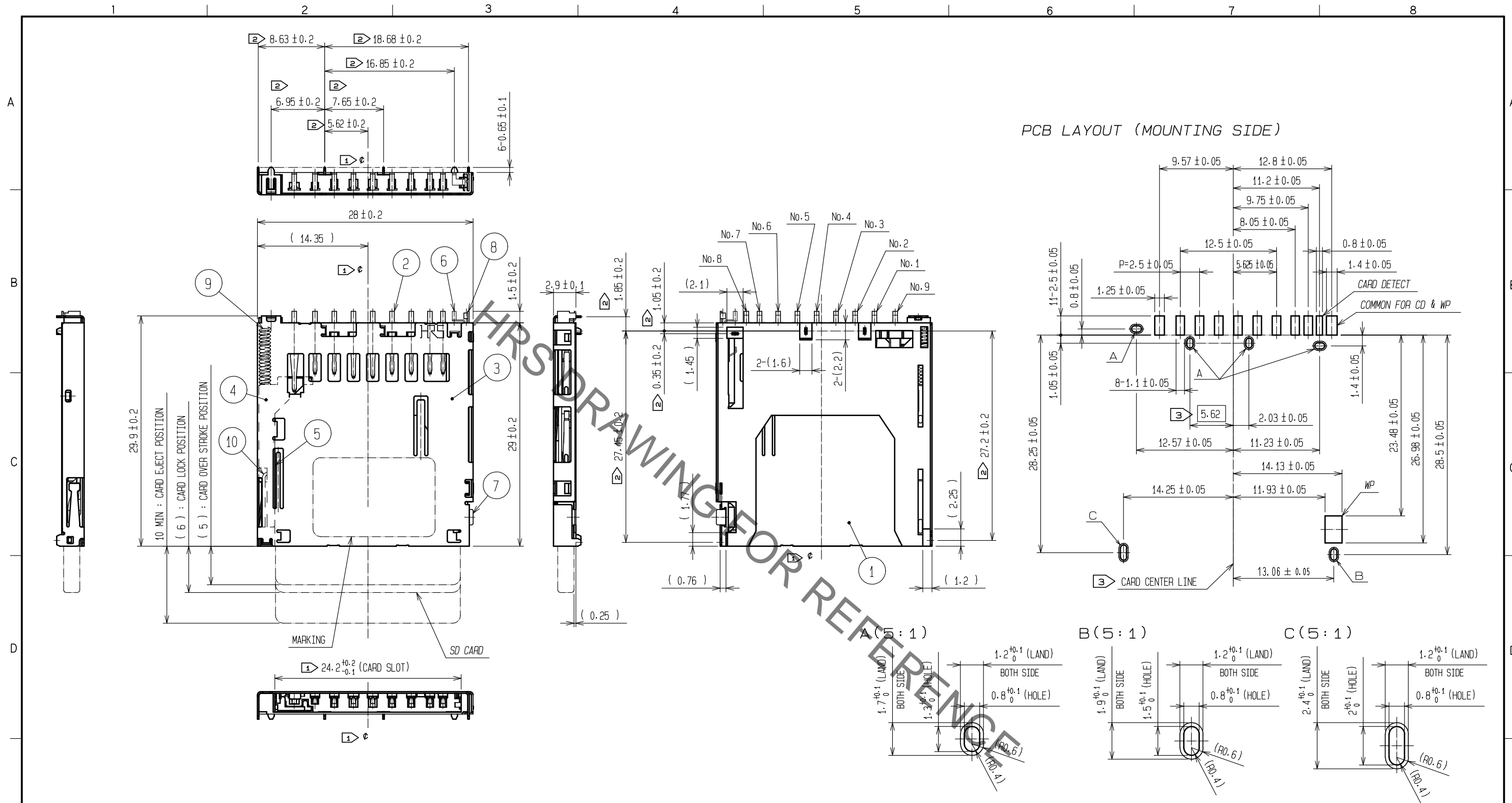


Jan.1.2022 Copyright 2022 HIROSE ELECTRIC CO., LTD. All Rights Reserved.
 In case of consideration for using Automotive equipment / device which demand high reliability, kindly contact our sales window correspondents.



NOTE. ① ϕ IS THE CENTERLINE OF THE CARD SLOT.
 ② THESE DIMENSIONS ARE FROM THE CENTER TO THE CENTER OF EACH DIP PIN.
 ③ 'CARD CENTER LINE' IS SPECIFIED BY DIMENSION [5.62].
 4 CARD DETECTION PROCEDURE AND WP DETECTION PROCEDURE ARE SHOWN IN THE BELOW.

CARD DETECTION SWITCH		WP DETECTION SWITCH		
NO CARD	CARD INSERTED	NO CARD	CARD INSERTED	
			WRITE PROTECT	WRITE ENABLE
OPEN	CLOSE	OPEN	OPEN	CLOSE
PART NO.6 PART NO.8	PART NO.6 PART NO.8	PART NO.7 PART NO.8	PART NO.7 PART NO.8	PART NO.7 PART NO.8

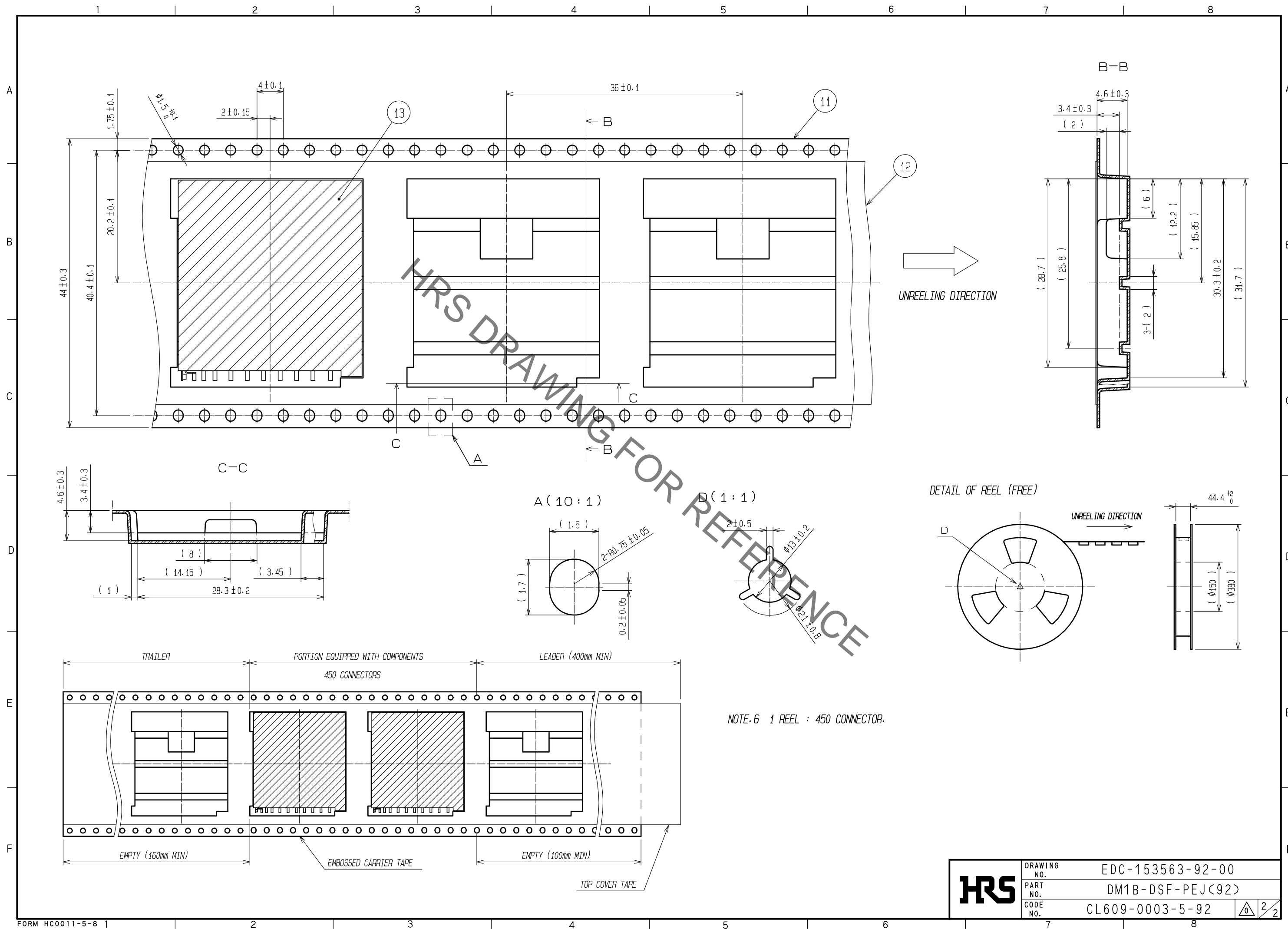
5 LEAD CO-PLANARITY TO BE 0.1 mm.

NO.	MATERIAL	FINISH	REMARKS	NO.	MATERIAL	FINISH	REMARKS
5	STAINLESS STEEL			13	(CONNECTOR)		
4	PA	BLACK	UL94V-0	12	POLYESTER		
3	STAINLESS STEEL	DIP AREA	Ni0.2 μ m + Sn1.5 μ m	11	PS		
2	COPPER ALLOY	CONTACT AREA	Ni1.5 μ m + Au0.2 μ m	10	STAINLESS STEEL		
1	LCP	MOUNTING AREA	Ni1.5 μ m + Au0.03 μ m	9	STEEL WIRE	Ni	
		BLACK	UL94V-0	6~8	COPPER ALLOY	CONTACT AREA	Ni1.5 μ m + Au0.2 μ m
						MOUNTING AREA	Ni1.5 μ m + Au0.03 μ m

UNITS	SCALE	COUNT	DESCRIPTION OF REVISIONS	DESIGNED	CHECKED	DATE
mm	2 : 1					

APPROVED	20200318	DRAWING NO.	EDC-153563-92-00
HT. YAMAGUCHI		PART NO.	DM1B-DSF-PEJ(92)
HT. YAMAGUCHI	20200318	CODE NO.	CL609-0003-5-92
MT. ITANO	20200318		
DS. HIROWATARI	20200317		

Jan.1.2022 Copyright 2022 HIROSE ELECTRIC CO., LTD. All Rights Reserved.
 In case of consideration for using Automotive equipment / device which demand high reliability, kindly contact our sales window correspondents.



NOTE.6 1 REEL : 450 CONNECTOR.

HRS	DRAWING NO.	EDC-153563-92-00
	PART NO.	DM1B-DSF-PEJ(92)
	CODE NO.	CL609-0003-5-92
		2/2