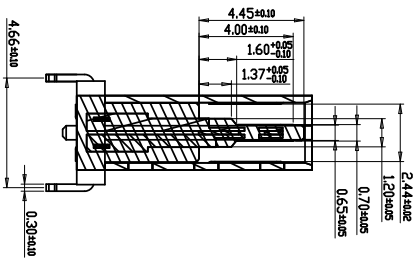
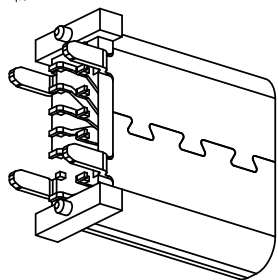
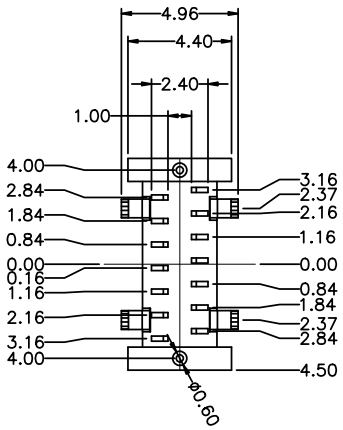
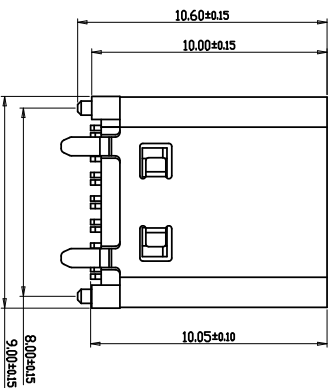
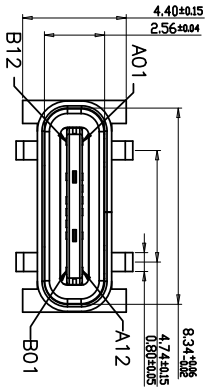


ROHS



截面 1-1

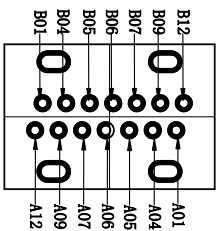
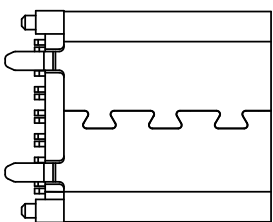
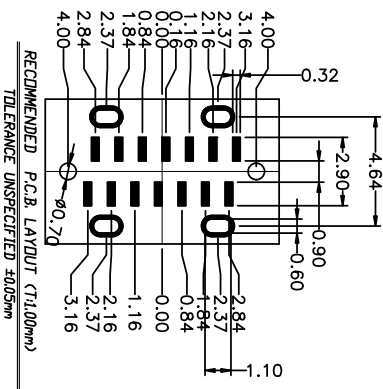


TABLE 1:

NO.	PART NAME	QTY	MATERIAL	DESCRIPTION	REMARK
①	Shell	1	SUS 304	NI PLATING	T=0-30mm
②	MID PLATE	1	SUS 304	Auti PLATING	T=0.15mm
③	Terminal	16	C2680		T=0.15mm
④	Housing	3	LCP 1301		

产品图
PRODUCT CHART DWG
深圳市精拓金电子有限公司
Shenzhen Jing Tuo Jin Electronics Co., Ltd.

公差一览表	单位	MM	制图	林属升	制料号
TOLERANCE UNLESS OTHERWISE	UNITS	MM	DRAWING	审核	918-46882029Y50001
X ±0.25	X	±0.5°	审核	郭治富	TYPE C3, 1母座直立式四脚有双排
X ±0.20	X	±2.°	审核	黄国荣	产品名称
.XX ±0.15	.XX	±1.°	日期	2020-06-22	产品NO
.XXX ±0.10	.XXX	±0.5°	日期	2020-06-22	贴片I/O, LCP, 覆胶, 14PIN, 漆带, 带
			DATE		角法
			DATE		版本
			DATE		AO

MAPX	MODIFICATION	DRW	DATE

NOTES:
1. MATERIAL: SEE "TABLE 1";
2. FINISH: SEE "TABLE 1";

3. ELECTRICAL:

- 3-1. CONTACT CURRENT RATING:
3A (BUS PIN 1.5A/PIN MAX),
3A (GND PIN 1.25A/PIN MAX), 0.25A/PIN (OTHER PIN).
- 3-2. INSULATION RESISTANCE:
100 MEGOHMS MIN. AT 250VDC.
- 3-3. DIELECTRIC WITHSTANDING VOLTAGE:
100VAC MIN.
- 3-4. LOW LEVEL CONTACT RESISTANCE:
INITIAL 40mΩ MAX.
AFTER 50mΩ MAX.

4. MECHANICAL CHARACTERISTICS:

- 4-1. MATING FORCE: 5*20N;
- 4-2. UNMATING FORCE: 6*20N (INITIAL),
6*20N (AFTER 10000 CYCLES);
- 4-3. DURABILITY: 10,000 MATING CYCLES.
- 4-4. OPERATING TEMPERATURE: -40° C TO +80° C