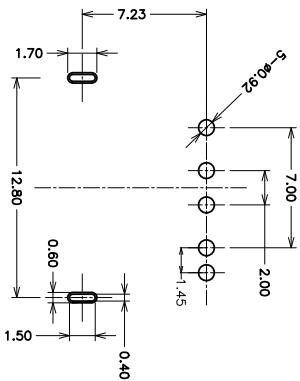
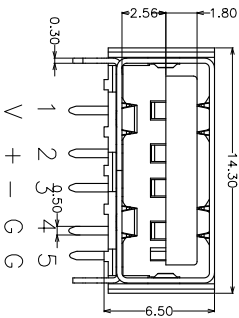
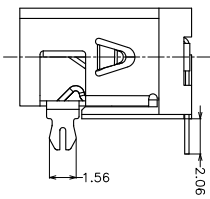
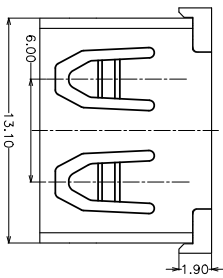
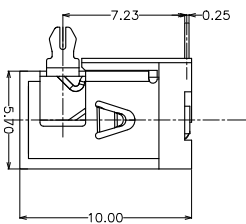
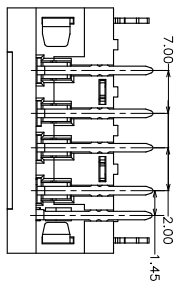
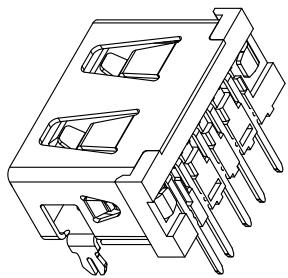


MAPX	MODIFICATION	DATE
------	--------------	------



RECOMMEND P.C.B LAYOUT
TOLERANCE: ±0.10

- 电气特性:Electrical:**
- 额定电流: Current Rating
1.5A/contact terminal
 - 额定电压: Voltage Rating
30V DC
 - 接触阻抗:Contact Resistance
30 milliohms MAX
 - 耐电压:Dielectric Withstanding Voltage:
500 V AC AT Sea level
 - 绝缘阻抗:Insulation Resistance:
1000MEGA ohms MIN
- 物理性能:Mechanical:**
- 插拔力: Connector Mate and Unmate Force
Mate force:3.57kgf (MAX)
Unmate force:0.7kgf (MIN)
 - 端子保持力: Terminal Retention
1.2kgf (MIN)
 - 寿命: 1500次
- 原材料:Material:**
- 塑胶:Housing:LCP 黑胶
 - 端子:Contact:Copper Alloy C2680
 - 外壳:Shell:C2680
- 电镀:Finish:**
- 端子Contact: Au 0.7u" Plated on contact area
Tin50u" Plated on solder area
Nickel 50u" Plated underplating over all.
 - 外壳Shell: Nickel 50u" Min plating over all.

深圳市精拓金电子有限公司

产品图

公差一览表

Pin NUMBER	SIGNAL NAME	TOLERANCE UNLESS OTHERWISE SPECIFIED
1	VBUS	±0.30 X
2	D-	±0.25 X
3	D+	±0.15 XX
4.5	GND	±0.10 .XXX

单位	MM	制图	林属升	制图料号	909-162A2021D10100
比例	1:1	审核	郭志富	产品名称	AF10.0连接器PIN脚间距宏达宏达连接器SMD
日期	2019.11.23	核准	黄国荣	角法	第三角法
DATE		APPD		版本	A0