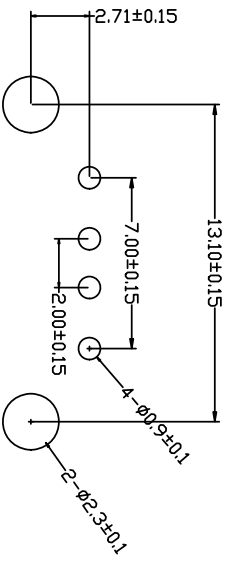
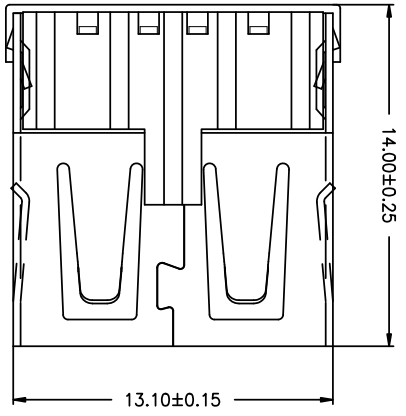
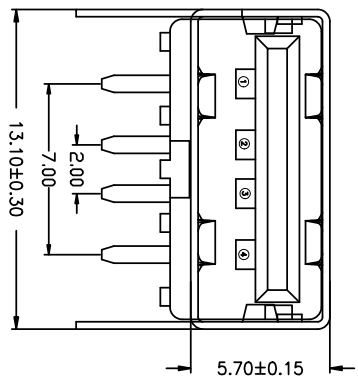
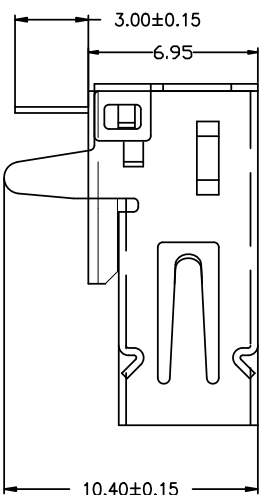


目 录 MAPX	设 变 内 容 MODIFICATION	日 期 DATE
-------------	-------------------------	-------------



RBCOMMENDBD P.C.B PATTRN LAYD UT

- 电气特性:Electrical:
- 额定电流: Current Rating  
1. 5A/contact terminal
  - 额定电压: Voltage Rating  
30V DC
  - 接触阻抗: Contact Resistance  
30 milliohms MAX
  - 耐压: Dielectric Withstanding Voltage:  
500 V AC AT Sea level
  - 绝缘阻抗: Insulation Resistance:  
100OMEGA ohms MIN
- 物理性能: Mechanical:
- 插拔力: Connector Mate and Unmate Force  
Mate force: 3. 57kgf (MAX)  
Unmate force: 0. 7kgf (MIN)
  - 端子保持力: Terminal Retention  
1. 2kgf (MIN)
  - 寿命: 1500次
- 原材料: Material:
- 塑胶: Housing: PBT NC
  - 端子: Contact: Copper Alloy C2680
  - 外壳: Shell: SPCC
- 电镀: Finish:
- 端子Contact: Au 0. 7u" Plated on contact area  
Tin50u" Plated on solder area
  - Nickel 50u" Plated underplating over all.
  - 外壳Shell: Nickel 50u" Min plating over all.

产品图

深圳市精拓金电子有限公司

Pin NUMBER	SIGNAL NAME
1	V BUS
2	D-
3	D+
4	GND

公差一览表	
TOLERANCE UNLESS OTHERWISE	
X	±0.25
X	±0.20
XX	±0.15
.XXX	±0.10
X'	±5'
X''	±2'
XX'	±1'
.XXX'	±0.5"

单位	MM	制图	林属升	产品料号	901-241A1011D10100
比例	1:1	审核	郭志富	产品名称	AF90度外扣置脚无边内弹珠壳
日期	2015/10/20	核准	黄国荣	角法	T型PBI白胶
DATE		Appd		版本	A0

