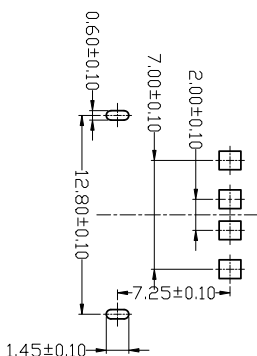
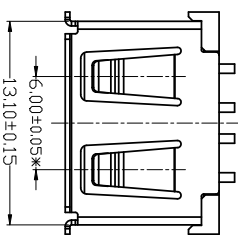
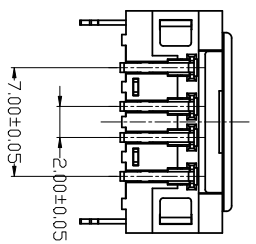
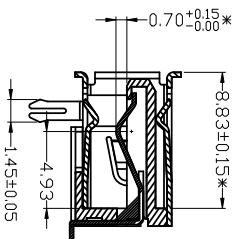
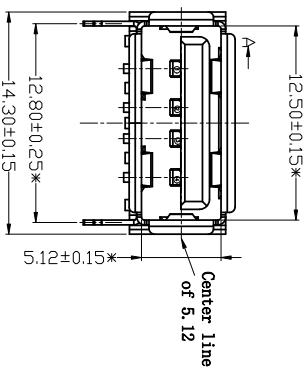
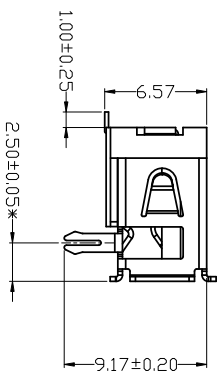


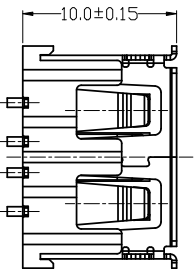
目錄 MAPX	變更內容 MODIFICATION	日期 DATE
------------	----------------------	------------



FRONT EDGE OF CONNECTOR  
PCB LAYOUT



SECTION A-A



电气特性:Electrical:

- 额定电流: Current Rating  
1. 5A/contact terminal
- 额定电压: Voltage Rating  
30V DC
- 接触阻抗: Contact Resistance  
30 milliohms MAX
- 耐电压: Dielectric Withstanding Voltage:  
500 V AC AT Sea Level
- 绝缘阻抗: Insulation Resistance:  
1000MEGA ohms MIN

物理性能:Mechanical:

- 插拔力: Connector Mate and Unmate Force  
Mate force: 3.57kgf (MAX)  
Unmate force: 1.02kgf (MIN)
  - 端子保持力: Terminal Retention  
1. 2kgf (MIN)
  - 寿命: 1500次  
原材料: Matorial:  
1. 塑胶:Housing:LCP BK
  - 端子: Contact: Copper Alloy C2680
  - 外壳: Shell: SPCC
- 电镀: Finish:
- 端子Contact: Au 0.7u" Plated on contact area  
Tin50u" Plated on solder area  
Nickel 50u" Plated underplating over all.
  - 外壳Shell: Nickel 50u"Min plating over all.

PRODUCT CHART DWG		产品图	
Pin NUMBER	SIGNAL NAME	公差一览表 TOLERANCE UNLESS OTHERWISE	单位 UNITS
1	VBUS	X ±0.25	X' ±5'
2	D-	X ±0.20	X' ±2'
3	D+	.XX ±0.15	.XX' ±1'
4	GND	.XXX ±0.10	.XXX' ±0.5'

深圳市精拓金电子有限公司

制图 DRAWING	林属升	产品料号 PRODUCT PART NO.	910-151A2022S10100
审核 CHKD	郭志富	产品名称 PRODUCT NO.	AP10.0C家用两脚有壳连接器C2680-6-SSMT
日期 DATE	2015/10/20	角法 NEW	版本 VER
日期 DATE	2015/10/20	角法 NEW	版本 VER