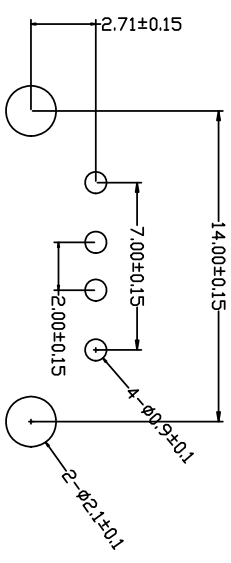
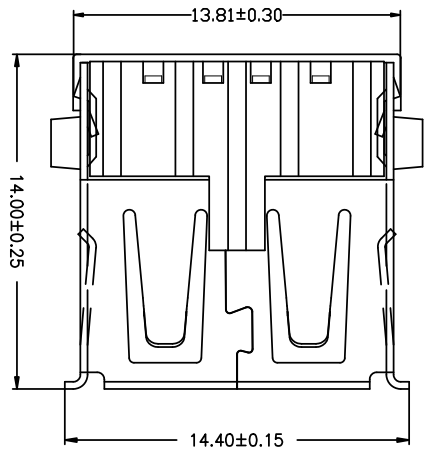
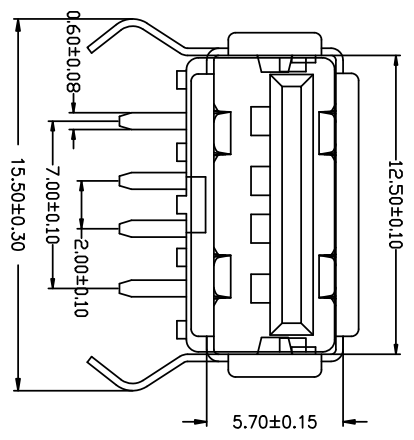
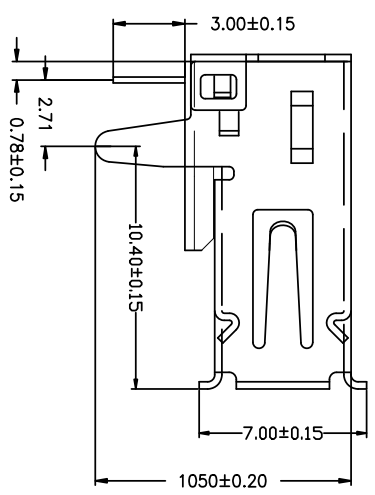


MAPX	MODIFICATION	DATE
------	--------------	------



RBCOMMENDBD P.C.B PATTBRN LAYD UT

备注：侧弹分为外弹与内弹

- 电气特性:Electrical:**
- 额定电流: Current Rating  
1.5A/contact terminal
  - 额定电压: Voltage Rating  
30V DC
  - 接触阻抗: Contact Resistance  
30 milliohms MAX
  - 耐电压: Dielectric Withstanding Voltage:  
500 V AC AT Sea Level
  - 绝缘阻抗: Insulation Resistance:  
1000MEGA ohms MIN
- 物理性能:Mechanical:**
- 插拔力: Cnector Mate and Umate Force  
Mate force:3.57Kgf (MAX)  
Umate force:0.7Kgf (MIN)
  - 端子保持力: Terminal Retention  
1.2kgf (MIN)
  - 寿命: 1500次
- 原材料:Material:**
- 塑胶:Housing:PBT 黑胶
  - 端子:Contact:Copper Alloy C2680
  - 外壳:Shell:SPCC
- 电镀:Finish:**
- 端子Contact: Au 0.7u" Plated on contact area  
Tin50u" Plated on solder area
  - Nickel 50u" Plated underplating over all.
  - 外壳Shell: Nickel 50u" Min plating over all.

# 深圳市精拓金电子有限公司

Pin NUMBER		SIGNAL NAME		公差一览表		制图		林属升		制图料号	
1		V-BUS		TOLERANCE UNLESS OTHERWISE SPECIFIED		UNIT		MM		DRAWING	
2		D-		±0.30 X		SCALE		1:1		CHECK	
3		D+		±0.25 X		DATE		2019.11.23		核校	
4		GND		±0.15 XX		DATE		2019.11.23		核校	
				±0.10 XXXX		DATE		2019.11.23		核校	
				±0.5°		DATE		2019.11.23		核校	
				±2°		DATE		2019.11.23		核校	
				±5°		DATE		2019.11.23		核校	
				±1°		DATE		2019.11.23		核校	
				±0.5°		DATE		2019.11.23		核校	

正在使用 ZWCAD 2022 个人版, 不得用于商业用途. 详情请咨询 4007-182-588.