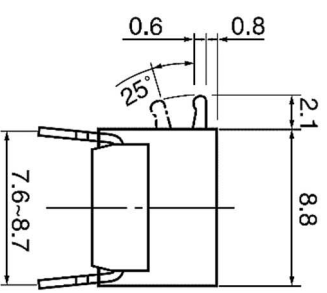
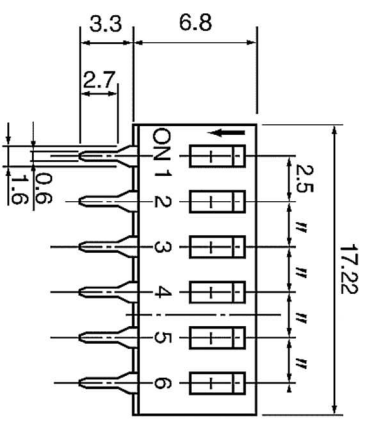
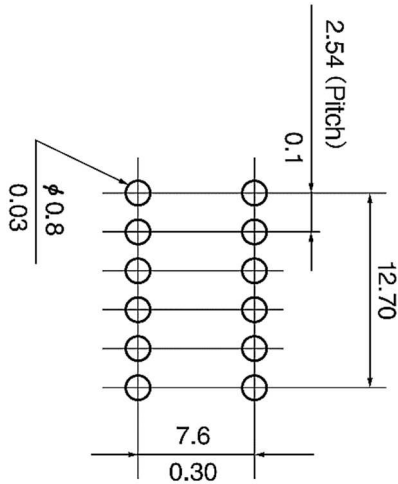
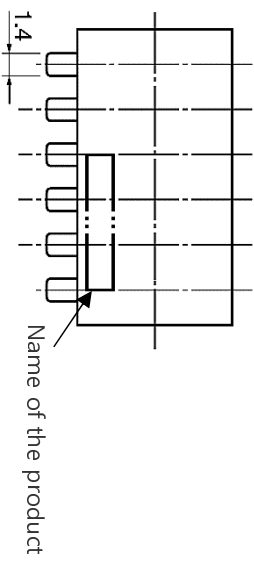


MRK	DATE	REVISION	SIGN
△			



SPECIFICATION

1. RATING : 0.4VA (DC 24V MAX)
2. OPERATING FORCE : 800gf MAX
3. CONTACT RESISTANCE : 50mΩ MAX.
4. LIFE CYCLE : 1,000 CYCLES MIN

01	-	DESCRIPTION	MATERIAL	-	1	-
NO.		CHECKED			QTY	VENDOR
DRAW/DESIGNED		APPROVED				
Y.N JEON	S.M PARK	J.P ROH				
2019-01-09			UNIT	mm		
SUNGJUN ELECTRONICS CO.,LTD			SIZE	A4	DRAW NO.	KSP-06H-0T-01
			G.TOL	±0.2	TITLE	DIP SWITCH
			SCALE	4:1	MODEL	KSP-06H
						SHEET
						1/1

1. Electrical Characteristics

- 1-1 Contact Rating : 0.4VA (DC 24V MAX)
- 1-2 Contact Resistance : 50mΩ MAX (DC 2V 10mA)
- 1-3 Insulation Resistance : 1000 MΩ MIN at 100V DC
- 1-4 Dielectric Strength : 300V AC for 1 min.

2. Mechanical Characteristics

- 2-1 Temperature Rating : -30°C ~ +85°C (operating)
- 2-2 Operating force : 800gf MAX
- 2-3 Mechanical life : 1,000 Cycles MIN
- 2-4 Stroke : 1.3mm
- 2-5 Operation life : DC 5V 10mA, 20~30 cycles/min, 1,000 cycles

3. Environmental Characteristics

- 3-1 Humidity : 90~95% RH, 40°C±2°C for 96 hours.
- 3-2 Low temperature : -45°C±3°C for 96 hours.
- 3-3 High temperature : 100°C±3°C for 96 hours.
- 3-4 Salt mist test : 50°C±2°C, salt solution 5% for 48 hours.
- 3-5 Soldering test : Thickness 1.6mm P.C.B, 245°C, 10 sec.
- 3-6 Vibration resistance : 10~55Hz, peak to peak 1.5mm, 2 hours each for a total of 6 hours.
- 3-7 Impact shock resistance : acceleration 50G, time 11±1mS,
3 cycles each in 6 directions for a total 18 cycles
- 3-8 Soldering temperature : 245°C±5°C for 5 sec. (wave soldering)
320°C±10°C for 3 sec. (manual soldering)