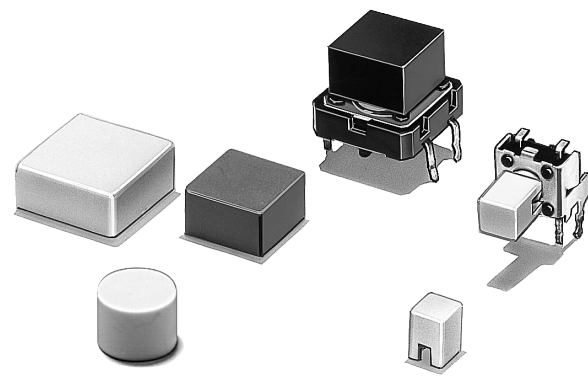


Tactile Switch Key Top B32

Key Top Designed Specially for Projected-plunger-type B3F, B3FS and B3W Switches

- Available in a wide range of colors and sizes.
- RoHS Compliant.



Ordering Information

For B3F, B3FS and B3W Switches

| Color | 6 x 6 mm Switches (B3F-1000, B3F-3000, B3F-6000, B3W-1000, B3FS) | | | 12 x 12 mm Switches (B3F-4000, B3F-5000, B3W-4000) | | |
|--------|---|-------------------|----------------|---|--------------------|---------------------|
| | 4 x 4 mm Key Top | 6 mm dia. Key Top | D-type Key Top | 9 x 9 mm Key Top | 12 x 12 mm Key Top | 9.5-mm dia. Key Top |
| Ivory | B32-1000 | B32-2000 | B32-2100 | B32-1200 | B32-1300 | B32-1600 |
| Black | B32-1010 | B32-2010 | B32-2110 | B32-1210 | B32-1310 | B32-1610 |
| Orange | B32-1020 | — | — | B32-1220 | B32-1320 | B32-1620 |
| Yellow | B32-1030 | — | — | B32-1230 | B32-1330 | B32-1630 |
| Blue | B32-1040 | — | — | B32-1240 | B32-1340 | — |
| White | B32-1060 | — | — | B32-1260 | B32-1360 | — |
| Red | B32-1080 | — | — | B32-1280 | B32-1380 | — |

Specifications

■ Characteristics

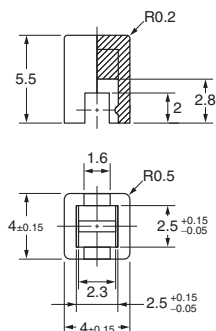
| | |
|-------------------------------|--|
| Ambient operating temperature | -25°C to 70°C (at 60% RH max.) with no icing or condensation |
| Ambient operating humidity | 35% to 85% (at 5 to 35°C) |

Dimensions

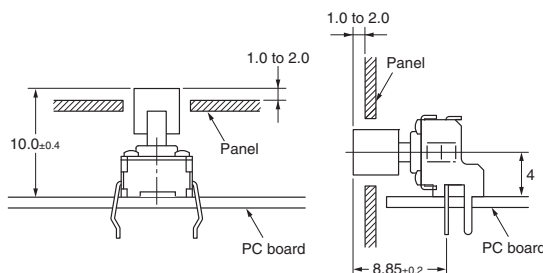
Note: Unless otherwise specified, all units are in millimeters and a tolerance of ± 0.4 mm applies to all dimensions.

■ For 6 x 6 mm Tactile Switch

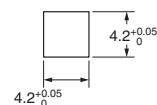
B32-10□0



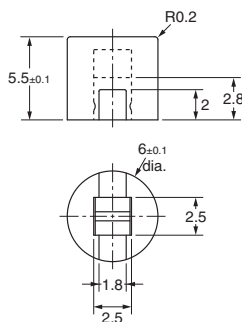
Reference Dimensions



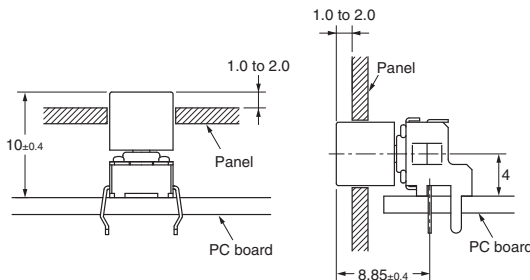
Panel Cutout



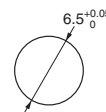
B32-2000 B32-2010



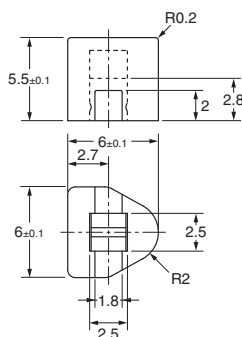
Reference Dimensions



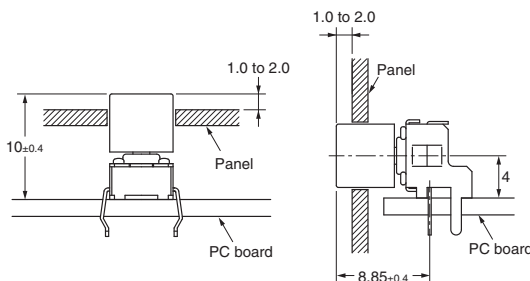
Panel Cutout



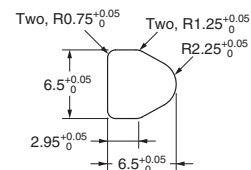
B32-2100 B32-2110



Reference Dimensions

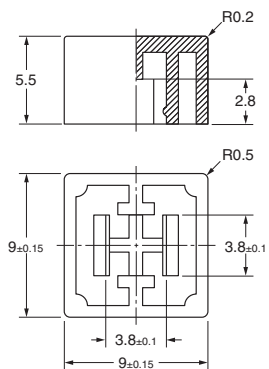


Panel Cutout

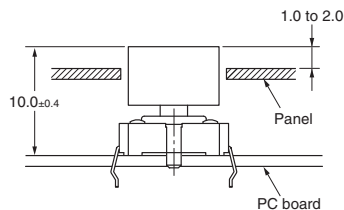


■ For 12 x 12 mm Tactile Switch

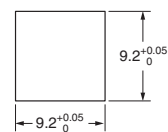
B32-12□0



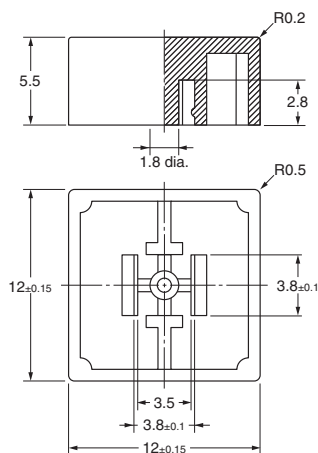
Reference Dimensions



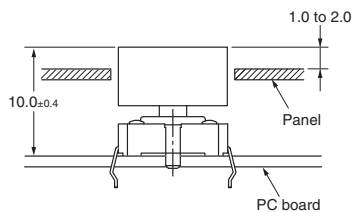
Panel Cutout



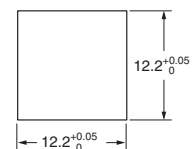
B32-13□0



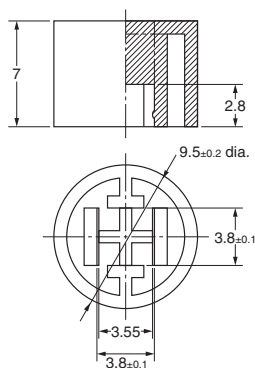
Reference Dimensions



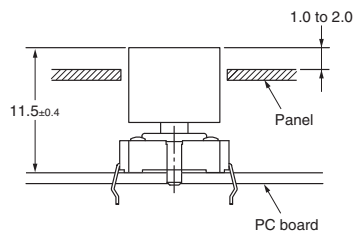
Panel Cutout



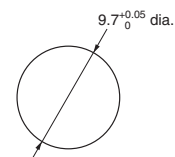
B32-16□0



Reference Dimensions



Panel Cutout



All sales are subject to Omron Electronic Components LLC standard terms and conditions of sale, which can be found at http://www.components.omron.com/components/web/webfiles.nsf/sales_terms.html

ALL DIMENSIONS SHOWN ARE IN MILLIMETERS.
To convert millimeters into inches, multiply by 0.03937. To convert grams into ounces, multiply by 0.03527.

OMRON[®]

**OMRON ELECTRONIC
COMPONENTS LLC**

55 E. Commerce Drive, Suite B
Schaumburg, IL 60173

847-882-2288

OMRON ON-LINE

Global - <http://www.omron.com>

USA - <http://www.components.omron.com>