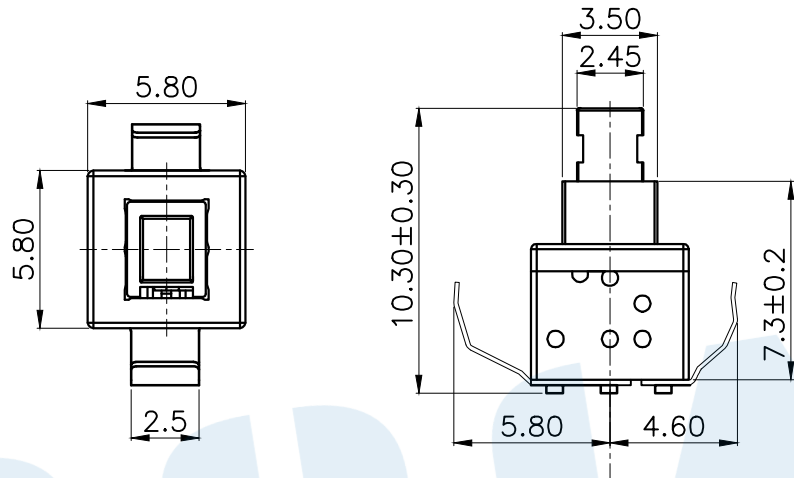
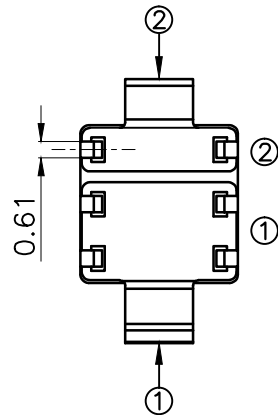
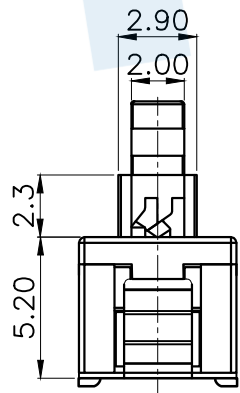
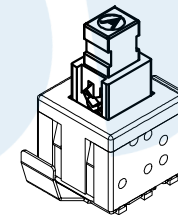
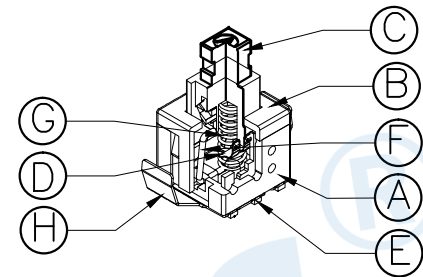
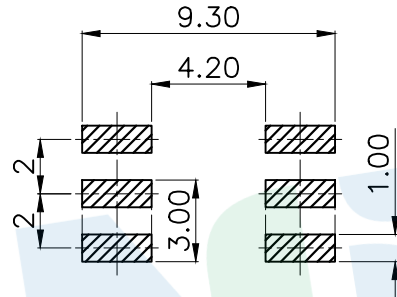


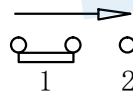
RoHS



PCB Layout(Pattern Side)



Circuit Diagram



| NO. | Operating Type | Part No. | Operating force | Travel |
|-----|-----------------------|------------|-----------------|---------|
| 1 | Push To Lock | TK-6580K-1 | 180±50gf | 2.0±0.2 |
| 2 | Push No Sound No Lock | TK-6580K-2 | 180±50gf | 2.0±0.2 |

| NO. | Name | Number | Qty | Materil | Remarks |
|-----|---------------------|--------|-----|-------------------|-----------|
| H | Contact pin contact | 1 | 1 | SUS | Natural |
| G | Spring | 1 | 1 | SUS | Natural |
| F | Crochet Needle | 1 | 1 | SUS | Natural |
| E | Terminal | 6 | 6 | Brass | Silvering |
| D | Reed | 2 | 2 | Phosphorus Copper | Silvering |
| C | Button | 1 | 1 | POM | White |
| B | Cover | 1 | 1 | POM | Black |
| A | Base | 1 | 1 | Nylon | Gray |

YUANDI® Yuandi Electronics Co, Ltd

| | | | |
|----------|------|------|---------------|
| design | date | name | BUTTON SWITCH |
| Review | date | name | TK-6580K-□ |
| Approved | date | name | |

Drawing number: Proportion 1:1 unit mm gage number A4

modify Review Approved Tolerance not specified

| | |
|-------|-------|
| angle | ±2' |
| 10~30 | ±0.30 |
| 5~10 | ±0.20 |
| ~ 5 | ±0.10 |