

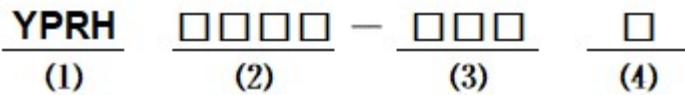
■ Features

- High current type.
- Ferrite bobbin core and compact size.
- Low core loss for high frequency power application.
- Large terminal surface for good PCB bonding.
- Operating temperature:-40°C ~ +125°C.

■ Applications

- Portable communication equipment.
- Notebook PC,digital camera,LCD television set.
- Power supply for VTR,OA equipment.
- DC/DC converters.

■ Product Identification



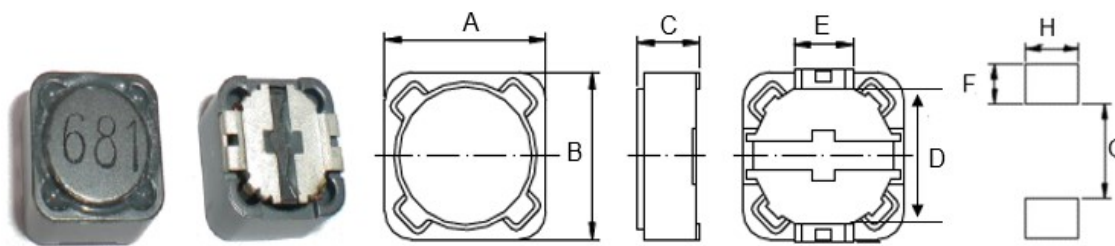
(1) : Type

(2) : Dimensions

(3) : Inductance value

(4) : Inductance Tolerance; N=±30%,M=±20%, K=±10%

■ Shapes and Dimensions (Unit: mm)



| TYPE | A | B | C max | D | E | F Ref. | G Ref. | H Ref. |
|----------|----------|----------|-------|----------|-----|--------|--------|--------|
| YPRH1207 | 12.0±0.5 | 12.0±0.5 | 8.0 | 7.60±0.2 | 5.0 | 2.8 | 7.0 | 5.4 |

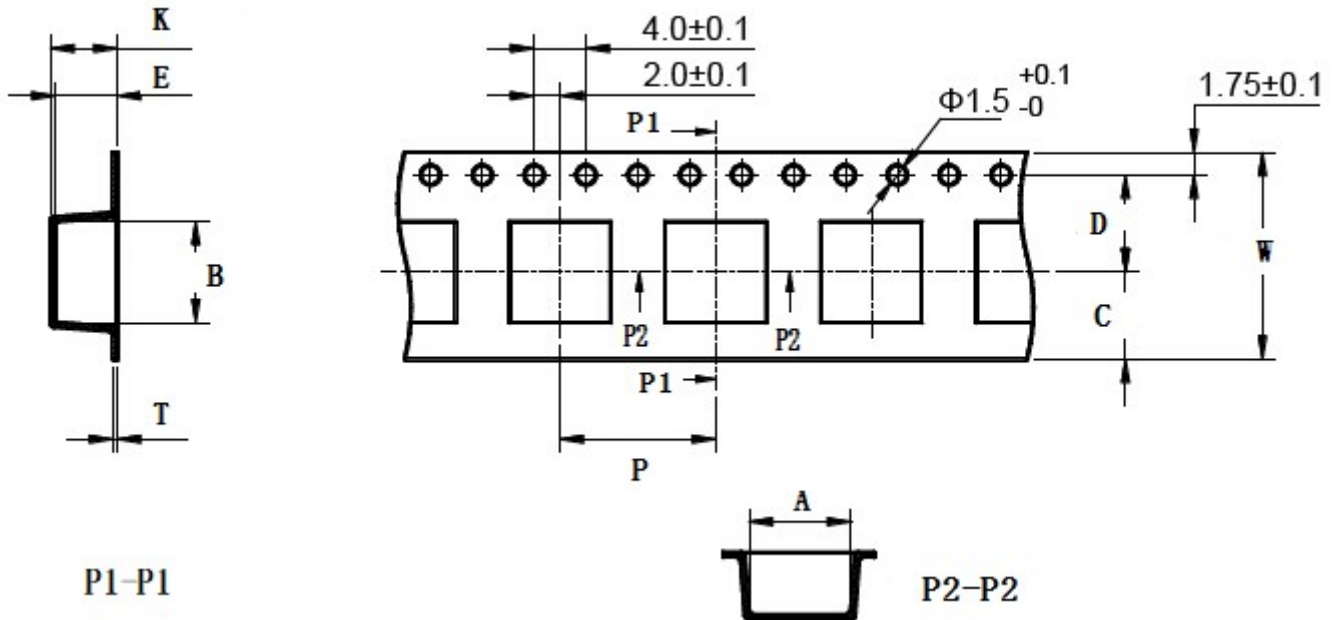
■ YPRH1207 Series

| Part Number | Inductance (uH) | L Test Frequency (KHz) | Max.DC Resistance (Ω) | MAX.Rated Current (A) |
|---------------|--------------------|---------------------------|--------------------------|--------------------------|
| YPRH1207-R47□ | 0.47 | 100 | 0.003 | 23.50 |
| YPRH1207-R75□ | 0.75 | 100 | 0.0042 | 19.80 |
| YPRH1207-1R0□ | 1.00 | 100 | 0.0065 | 10.00 |
| YPRH1207-1R2□ | 1.20 | 100 | 0.007 | 9.80 |
| YPRH1207-1R5□ | 1.50 | 100 | 0.008 | 9.40 |
| YPRH1207-1R8□ | 1.80 | 100 | 0.010 | 9.00 |
| YPRH1207-2R2□ | 2.20 | 100 | 0.012 | 8.00 |
| YPRH1207-2R7□ | 2.70 | 100 | 0.013 | 8.00 |
| YPRH1207-3R3□ | 3.30 | 100 | 0.013 | 8.00 |
| YPRH1207-3R9□ | 3.90 | 100 | 0.014 | 7.50 |
| YPRH1207-4R0□ | 4.00 | 100 | 0.015 | 7.20 |
| YPRH1207-4R7□ | 4.70 | 100 | 0.016 | 6.80 |
| YPRH1207-5R6□ | 5.60 | 100 | 0.017 | 6.40 |
| YPRH1207-6R1□ | 6.10 | 100 | 0.018 | 6.20 |
| YPRH1207-6R8□ | 6.80 | 100 | 0.019 | 6.20 |
| YPRH1207-7R0□ | 7.00 | 100 | 0.019 | 6.10 |
| YPRH1207-7R6□ | 7.60 | 100 | 0.020 | 5.90 |
| YPRH1207-8R2□ | 8.20 | 100 | 0.020 | 5.60 |
| YPRH1207-100□ | 10.0 | 100 | 0.022 | 5.40 |
| YPRH1207-120□ | 12.0 | 100 | 0.025 | 4.90 |
| YPRH1207-150□ | 15.0 | 100 | 0.030 | 4.50 |
| YPRH1207-180□ | 18.0 | 100 | 0.039 | 3.90 |
| YPRH1207-220□ | 22.0 | 100 | 0.043 | 3.60 |
| YPRH1207-270□ | 27.0 | 100 | 0.046 | 3.40 |
| YPRH1207-330□ | 33.0 | 100 | 0.065 | 3.00 |

| Part Number | Inductance (μ H) | L Test Frequency (KHz) | Max.DC Resistance (Ω) | MAX.Rated Current (A) |
|---------------|--------------------------|---------------------------|-----------------------------------|--------------------------|
| YPRH1207-390□ | 39.0 | 100 | 0.073 | 2.75 |
| YPRH1207-470□ | 47.0 | 100 | 0.100 | 2.50 |
| YPRH1207-530□ | 53.0 | 100 | 0.100 | 2.45 |
| YPRH1207-560□ | 56.0 | 100 | 0.110 | 2.35 |
| YPRH1207-680□ | 68.0 | 100 | 0.140 | 2.10 |
| YPRH1207-820□ | 82.0 | 100 | 0.160 | 1.95 |
| YPRH1207-101□ | 100 | 100 | 0.220 | 1.70 |
| YPRH1207-121□ | 120 | 100 | 0.250 | 1.60 |
| YPRH1207-151□ | 150 | 100 | 0.280 | 1.42 |
| YPRH1207-181□ | 180 | 100 | 0.350 | 1.30 |
| YPRH1207-221□ | 220 | 100 | 0.390 | 1.16 |
| YPRH1207-271□ | 270 | 100 | 0.560 | 1.06 |
| YPRH1207-331□ | 330 | 100 | 0.640 | 0.95 |
| YPRH1207-391□ | 390 | 100 | 0.700 | 0.88 |
| YPRH1207-471□ | 470 | 100 | 0.980 | 0.79 |
| YPRH1207-561□ | 560 | 100 | 1.070 | 0.73 |
| YPRH1207-681□ | 680 | 100 | 1.460 | 0.67 |
| YPRH1207-821□ | 820 | 100 | 1.640 | 0.60 |
| YPRH1207-102□ | 1000 | 100 | 1.820 | 0.55 |
| YPRH1207-122□ | 1200 | 100 | 2.600 | 0.48 |

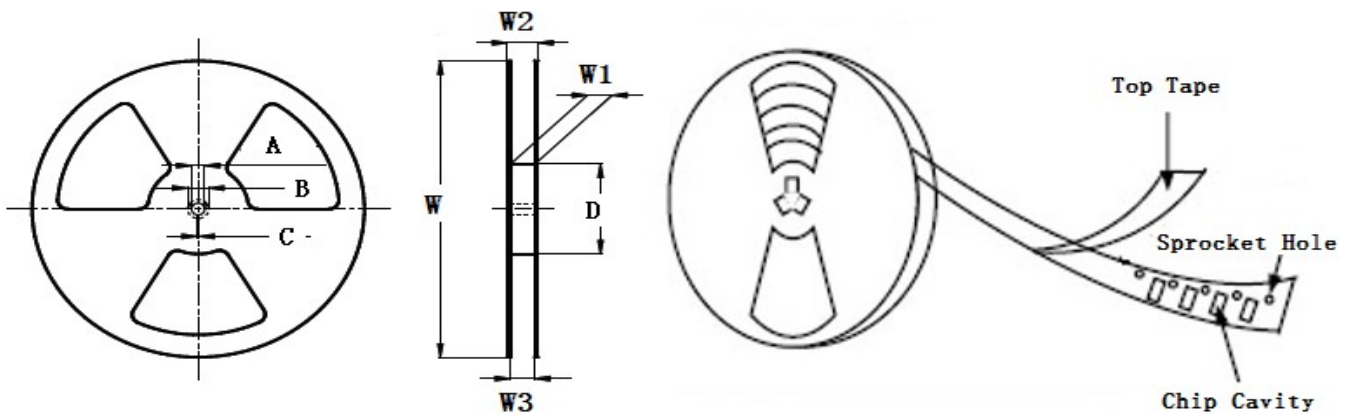
- ※ The saturation current value is the DC current value having inductance decrease down to 30%.(at 20°C)
- ※ The temperature rise current value is the DC current value having temperature increase up to 40°C. (at 20°C)
- ※ The rated current is the DC current value that satisfies both of current value saturation current value and temperature rise current value.

■ Taping Dimensions(Unit:mm)



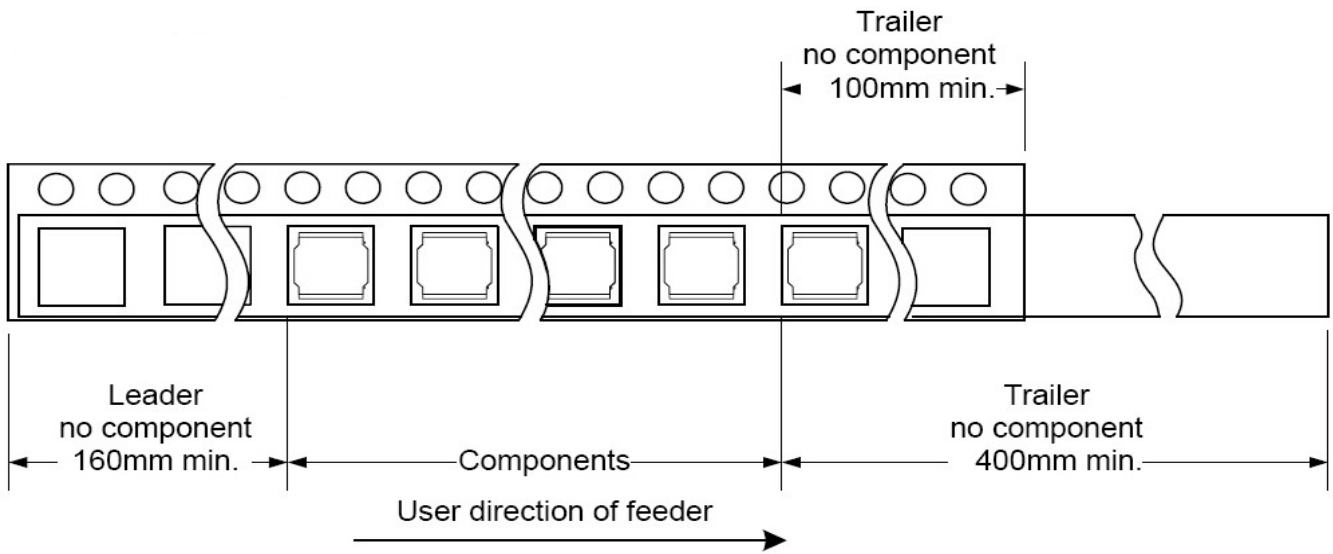
| TYPE | MPQ | W | A | B | C | D | E | P | K | T |
|----------|-----|--------|----------|----------|-------|----------|---------|--------|---------|----------|
| YPRH1207 | 500 | 24±0.3 | 12.6±0.1 | 12.6±0.1 | 10.75 | 11.5±0.1 | 8.2±0.1 | 16±0.1 | 8.4 Ref | 0.4±0.05 |

■ Reel Dimensions(Unit:mm)



| TYPE | W | W1 | W2 | W3 | A | B | C | D |
|----------|----------|-----------|-----------|-----------|-----------|-----------|----------|---------|
| YPRH1207 | 330±2.00 | 24.4±1.50 | 30.40 Max | 23.90 Min | 13.0±0.50 | 21.0±0.80 | 2.0±0.50 | 100 Min |

Direction of rolling



Cover tape peel off condition



Cover tape peel force shall be 0.1N to 1.3N.

Reference peel speed 300 ± 10 mm/min.