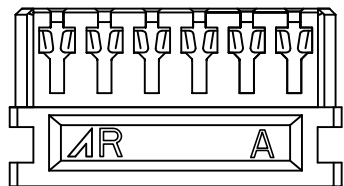
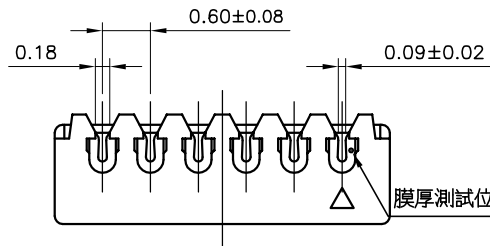
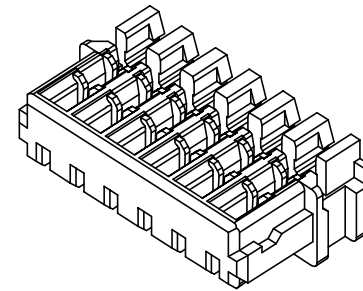
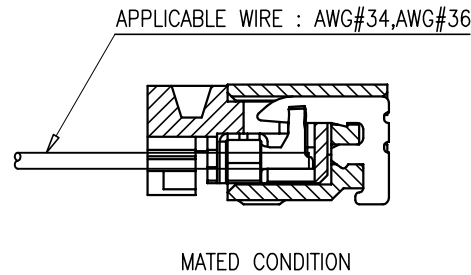
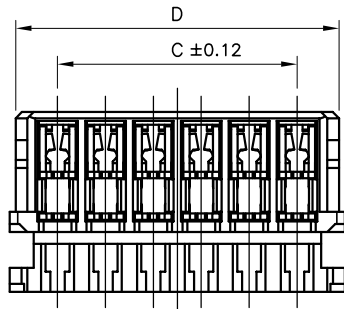
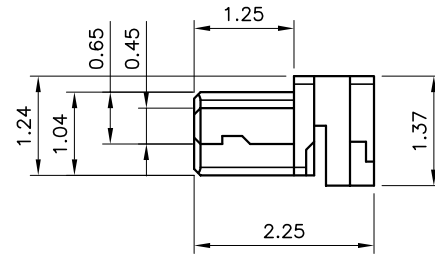
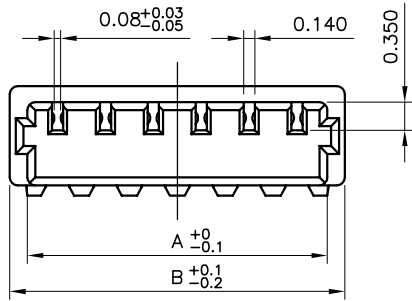


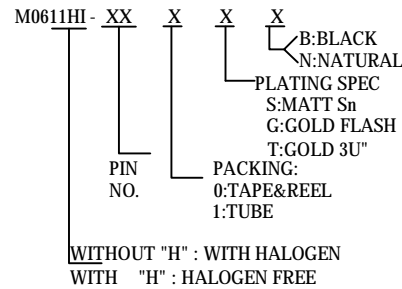
环保物料

TEL: 0769-82001899

NOTE:
 1.MATERIAL:
 Housing: ThermalPlastic (UL94V-0)
 Terminal: Copper Alloy
 Color: Natural
 2.SPECIFICATION:
 Current Rating: 0.2A AC,DC (AWG#36)
 0.3A AC,DC (AWG#34)
 Voltage Rating: 30V (AC,DC)
 Contact Resistance: Initial: 40mΩ max
 After environmental: 50mΩmax
 Insulator Resistance:Initial: 100MΩ min
 After environmental:100MΩ min
 Withstanding Voltage:200v AC for 1 minute
 Temperature Range: -25°C~85°C
 Applicable Wire: AWG #36; AWG#34
 Insulation O.D.: $\phi 0.29 \pm 0.02$ mm(AWG#36)
 $\phi 0.32 \pm 0.02$ mm(AWG#34)



3.Ordering Information:



CIRCUITS	DIMENSION			
	A	B	C	D
2	1.36	1.80	0.60	1.65
4	2.56	3.00	1.80	2.85
5	3.16	3.60	2.40	3.45
6	3.76	4.20	3.00	4.05
8	4.96	5.40	4.20	5.25
10	6.16	6.60	5.40	6.45
12	7.36	7.80	6.60	7.65
16	9.76	10.20	9.00	10.05

			TOLERANCE UNLESS OTHERWISE		DRAWN	CK tan	XFCN兴飞连接器有限公司 CONNECTORS XFCN CONNECTORS CO., LTD.		SHEET	1/1
			X.	±0.30 X° ±5°	CHKD				DATE	2010. 4. 12
			.X	±0.20 .X° ±2°	APPD		PRODUCT NAME	0.60mm IDC Style Connectors	UNITS	mm
			.XX	±0.08 .XX° ±1°	VIEW	⊕	PART. NO.	M0611HI-XX-GB	SCALE	1:1
AO	MODIFICATION	DRAW	DATE	.XXX	±0.03 .XXX° ±0.5°				DWG NO.	009