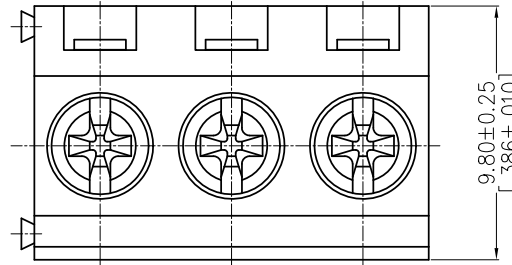
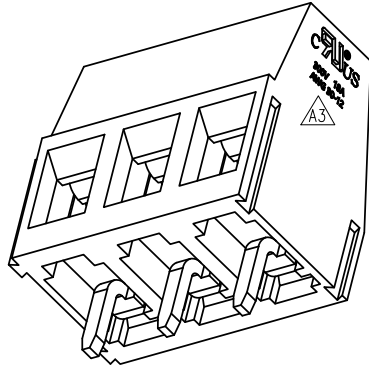


HSF

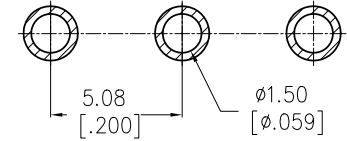
NOTES:

Rated Current: 18 AMP
 Rated Voltage: 300 V
 Contact Resistance: 8 mΩ max
 Withstand Voltage: 2500 V AC/DC
 Insulation Resistance: 1000 MΩ min
 Operation Temperature: -40℃ to +105℃
 Screw Torque: 4.5 lbf.in
 Wire Range: 12~30 AWG

Screw Material: Steel
 Pin Block Material: Brass
 Cite Feet Material: Brass
 Cite Feet Plating: Matte Tin Plated Over Nickel
 Insulator Material: PA66 UL94 V-0



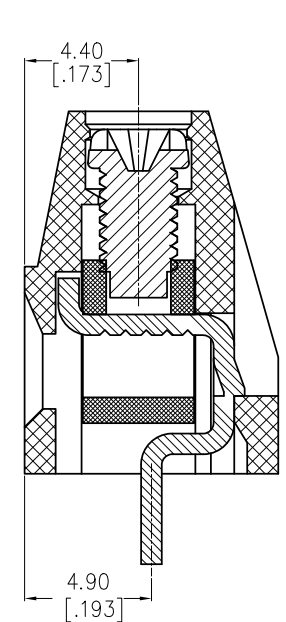
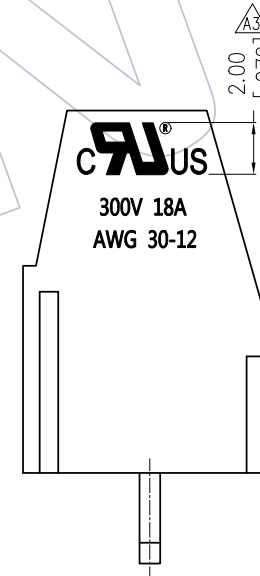
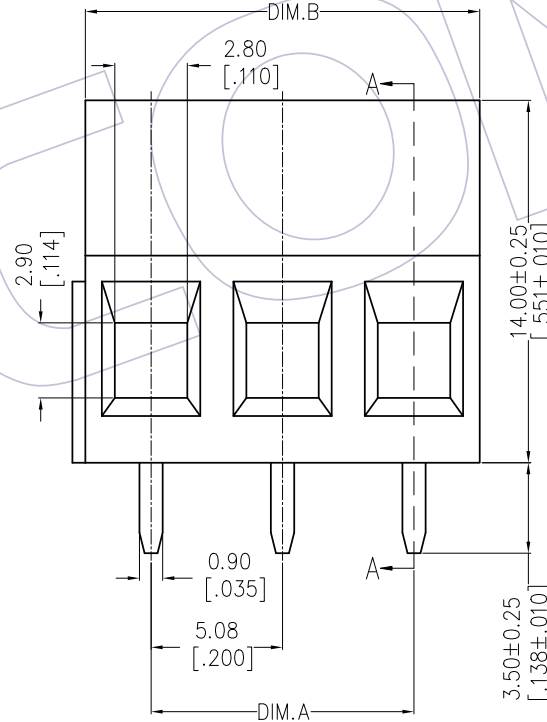
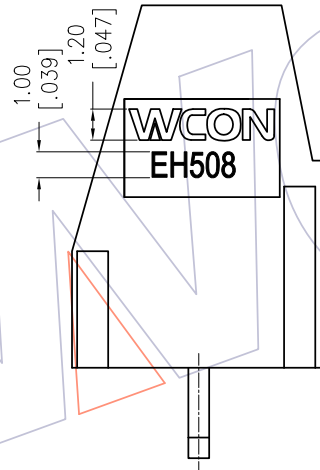
Recommended P.C.B Layout(Top Side)
 (PCB BOARD TOLERANCE±0.05)



Ordering Information:

E H 508 - 140 S XX A SM 1

Pitch 508=5.08
 Housing High 140=14.00
 No. of Pins 02-03P
 Contact Plated SM=Matte Tin
 Color A=Green



SECTION A-A

PIN	DIM.A	DIM.B
3P	10.16	15.24
2P	5.08	10.16

REV	DATE	MODIFICATION DESCRIPTION	CHANGE	DIM	TOL	OPERATION	DRAW	DATE	SCALE	FIT	PART NO.
A3	2020/06/18	Add UL Logo	XSR			OPERATION	XSR	2020/06/18	UNIT	mm	EH508-140SXXASM1
A2	2013/07/08	Modify		X.X	±0.40		CHECK	DATE	SIZE	inch	TITLE:
A1	2013/04/25	Modify		X.XX	±0.25				SHEET	A4	5.08mm Pitch
A0	2013/02/04	NEW		X.XXX	±0.15		APPROVE	DATE	PROJ.	1/1	Euro Terminal Blocks
				Angle	± 3'						Customer NO.

WCON

Http: www.wcon.com

WCON-Dongguan Tel: +86 769 85358920 Fax: +86 769 85358915 E-mail: sales@wcon.com
 WCON-Kunshan Tel: +86 512 57468408 Fax: +86 512 57468468 E-mail: salesks@wcon.com